

A library in the Grands Moulins de Paris : challenging reality





1996 : The university of Paris 7 began the process of the moving

2000-2001 : Establishing the functional program

2001 : Rudy Ricciotti won the architecture competition to redesign the Grands Moulins

2006 : The first occupants will move

2007 (beginning) : The library will open its doors

The library program

Users : 20 000 University (students, professors, researchers, staff)

students from Paris and the surrounding areas

local public

Work stations : 1800 including 900 computerized stations

numerous rooms for group work

Documents : 350 000 freely accessible

350 000 in dense storage

Organization of documents : by documentary poles

Access to information : on site and distance information and self training resources.

Digital work environment

Training : two training rooms for users instruction

Internal services and dense storage spaces : 20% of the total surface area

Surface areas and level : estimated : 13000 m²

ideally no more than 4 levels of public space
with spatial continuity

The building and its evolution

An impressive example of early twentieth century industrial architecture

Riciotti respects both its outward appearance and external features

The industrial mill in function



The building



The building



The building



For the library

- levelling all floors and constructing new walkways
- piercing one of the facades
- creating horizontal and vertical circulations
- creating floor openings
- lining the basement in order to install storage spaces

Walkways



New walkways



Piercing one of the facades



Creating floor openings



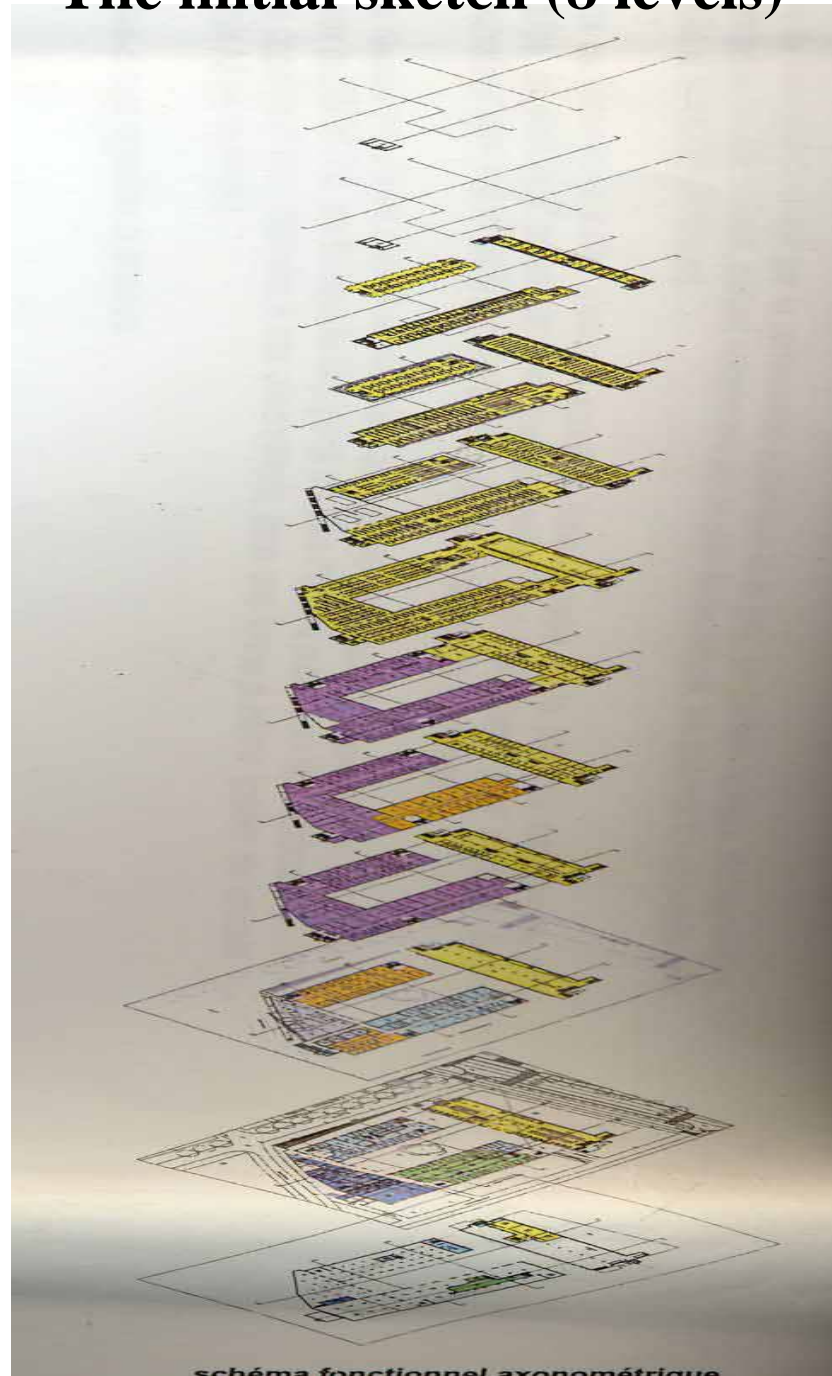
Creating floor openings



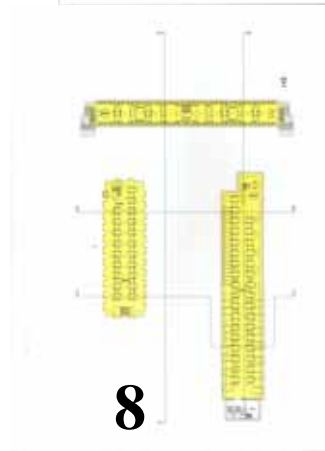
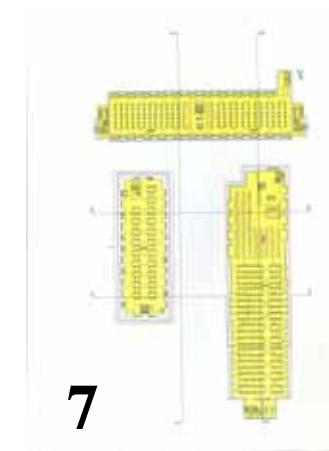
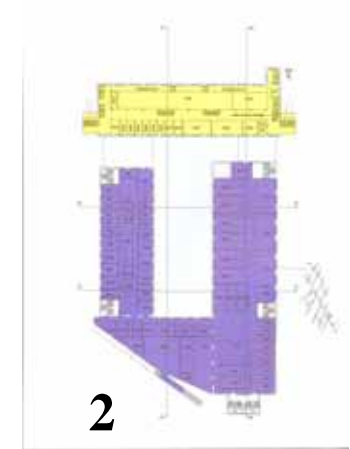
The main interactions between the building and program

From the initial sketch to the final project

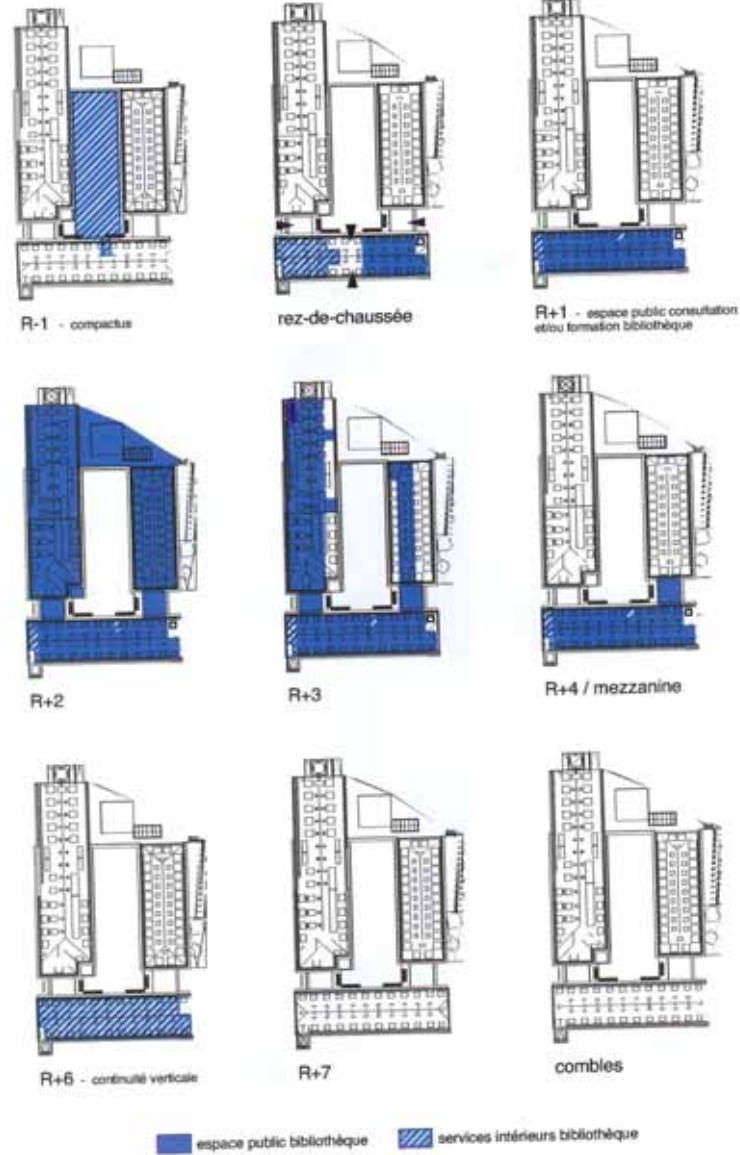
The initial sketch (8 levels)



The initial sketch (8 levels)



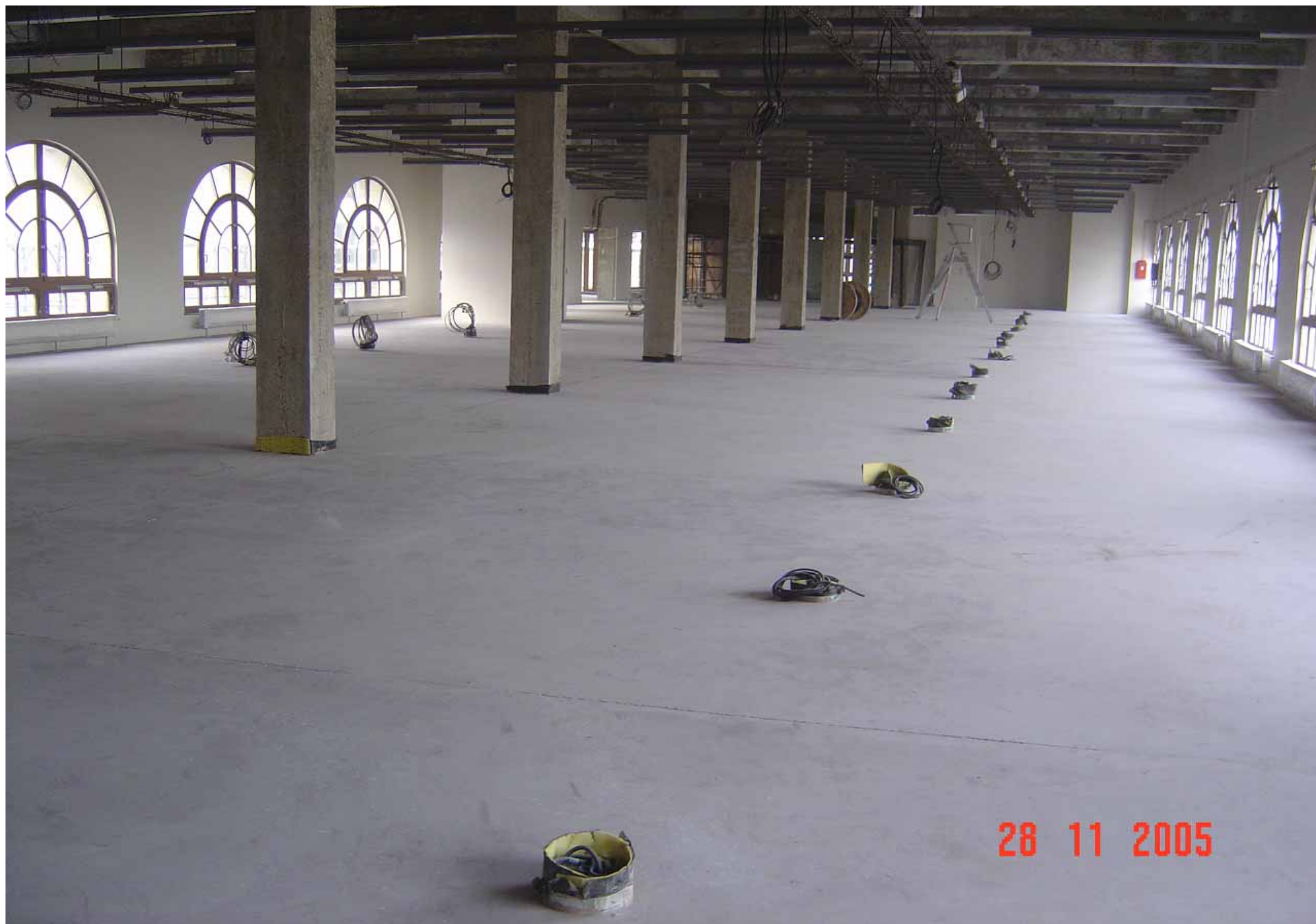
The final project



A close dialog with the architect team : take into account the building

The features that interacted with the functional requirements

- general constructive network (7m.)
- ... but forest of columns in some areas
- load-bearing capacity
- light
- uneven ceiling heights (between 3 and 5 m.)
- quadrilateral lay out



28 11 2005

Forest of columns in some areas





**Uneven ceiling
heights
between
3 and 5 m.**



Quadilateral lay out



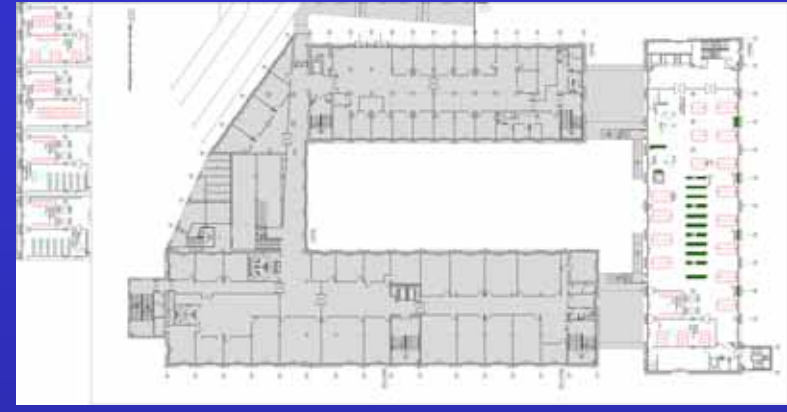
Successfull solutions for

- circulations for users, documents and internal services
- autonomy of the internal services
- continuity between the documents holding spaces

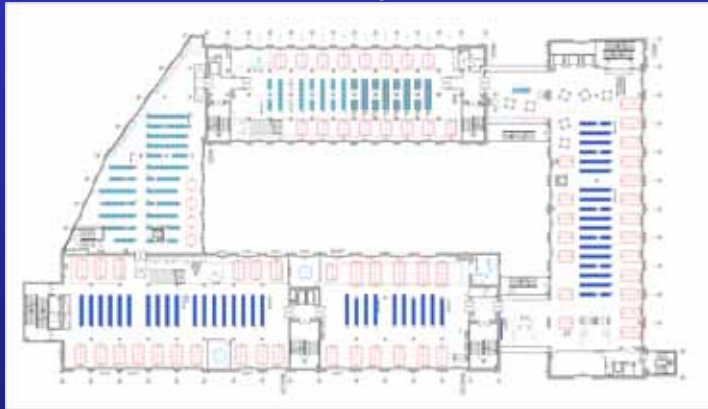
Furnishing the library



0



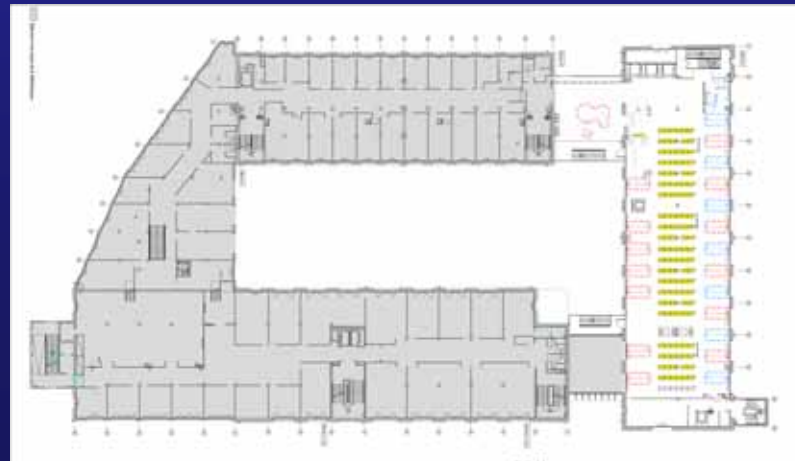
1



2



3



4

Bring the aesthetic choices of the architect in line with the functional requirements

The project's collaborators all in contact

Considering the quality of the building, the constraints its presents are viewed in a positive light – as a challenge



31 1 2006



14 12 2004

Virtual view



**Not the ideal library but a library suited to its purpose
and unlike any other**



vue sur l'angle de l'esplanade des Grands Moulins et du quai Panhard-Levassor - état projeté

