

LAG – Brüssel 2024

# The Concept and Realisation of Branch Libraries at the University of Frankfurt

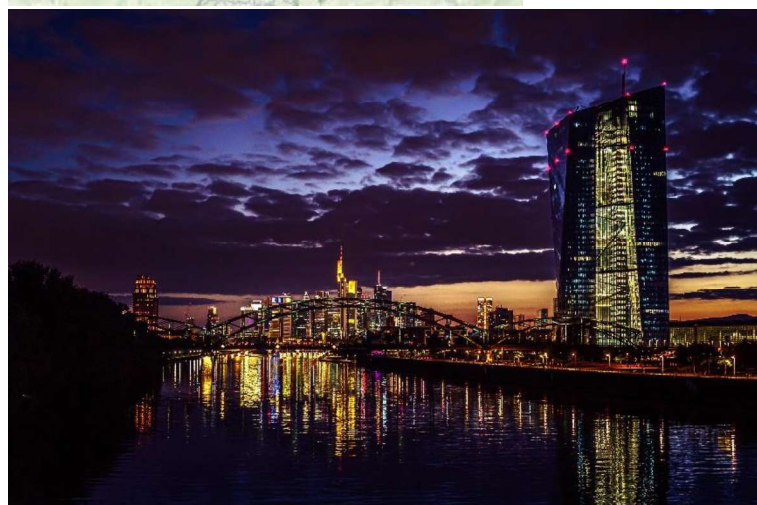
Angela Hausinger  
University Library Johann Christian Senckenberg  
Goethe-University (Frankfurt / Germany)

26.04.2024

## Topics

- Environment of the University Library
- University Library
- Concept of Branch Libraries in Frankfurt
- Branch Libraries – some impressions
- The University Library 2024 and further developments

## Environment of the University Library – City of Frankfurt



Known for

- International Airport
- European Central Bank
- International Book Fair

Inhabitants: 773.000

International City:

- 56% with migration background
- 175 different nationalities

### „Goethe-University“

- founded 1914
- 2023:
  - Students: 43.360
  - Staff: 5.817 (582 Professors)



### „University Library Johann Christian Senckenberg“

- Oldest branch dates back to 1484
- 2000: 150 small and smallest libraries and 2 functional University Libraries
- 2005: fully integrated into the Goethe-University

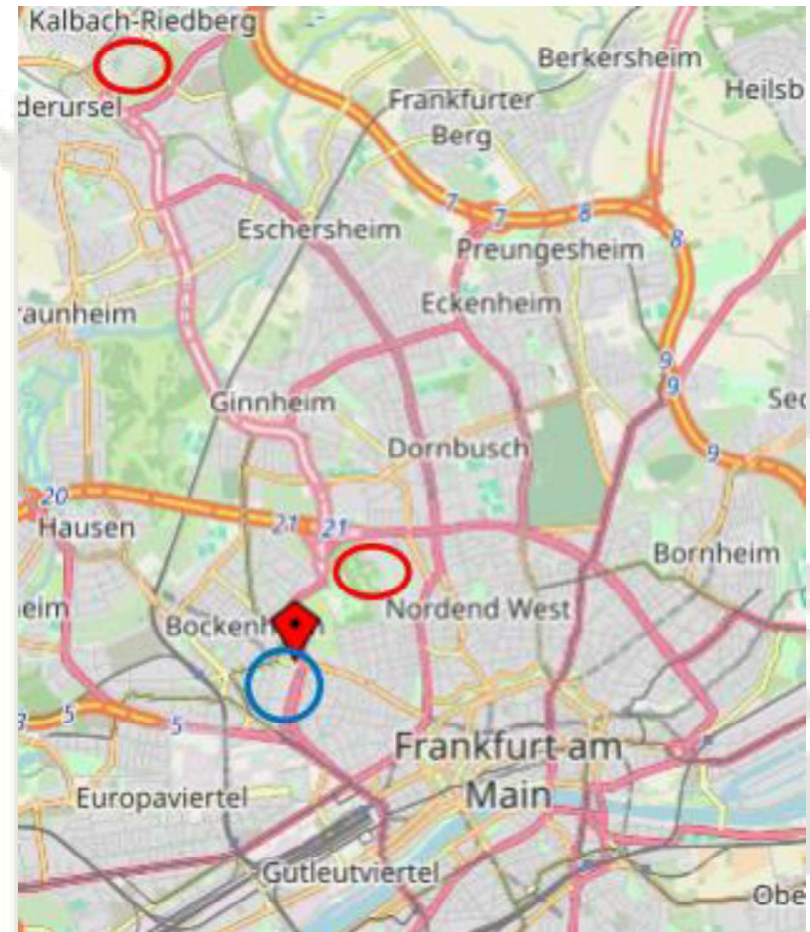


## Branch Libraries: Start of the realisation

Campus Bockenheim (old)

Campus Westend (new)

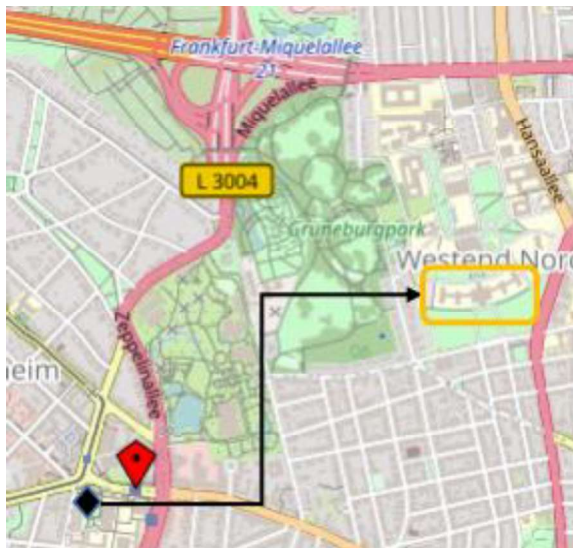
Campus Riedberg



## Humanities Library



- 21 libraries => Humanities Library
- Opening: 2001 (110 Mio. EUR)
- Floor area (Lib.): 7.900 m<sup>2</sup>





## Humanities Library



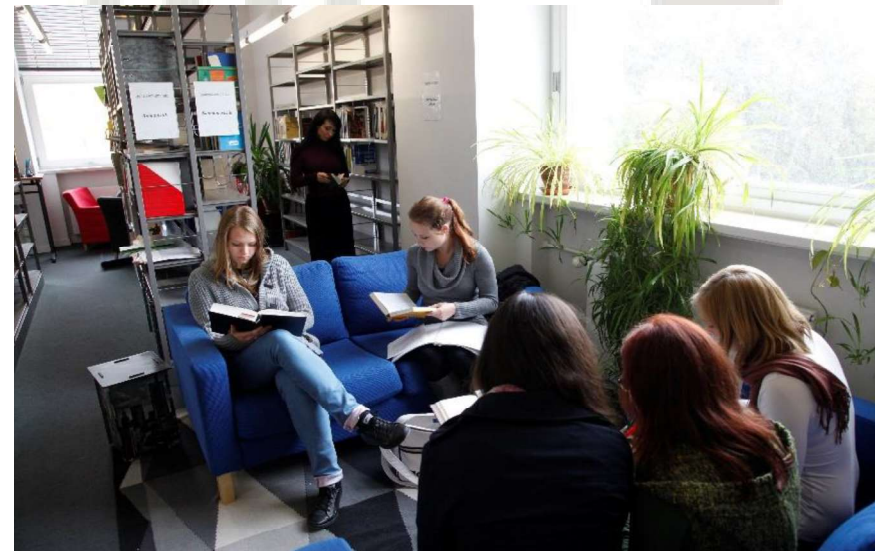
Students of humanities: ca. 6.000

User seats: 800

Shelf capacity: ca. 1 Mio.

Staff: 18,2 FTE

Opening hours: Mon-Fri 8-22, Sat: 10-18



## Humanities Library



Reading Room

„Paternoster“





## Concept of Branch Libraries

- New building – new location
- Concentration of small libraries – interdisciplinary
- Improvement and stabilisation of opening hours
- Learning Centres
- Open for the public
- Reduction of stock pre-movement: 15-20%
- No place for collection increase
- Open stacks
- Staff move from faculty to University Library
- Professionalisation of library work
- Division of tasks between branch libraries and Central Library

## Library of Law and Economics



Opening: 2008

Floor area: 8.200 m<sup>2</sup>

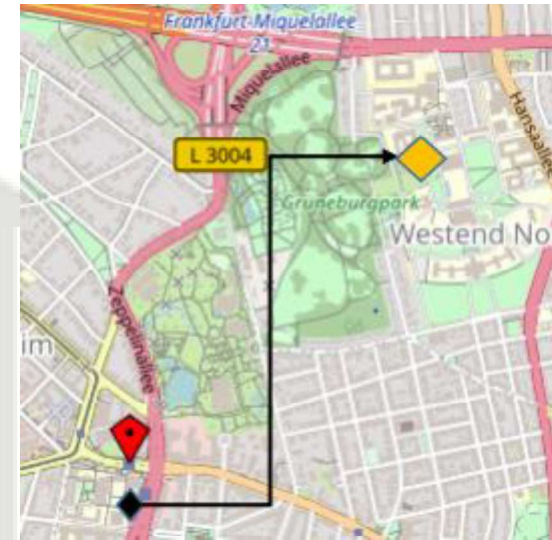
Students of law and economics: ca. 10.000

User seats: 1.000

Shelf capacity: 630.000

Staff: 15,2 FTE

Opening hours: Mon-Fri 8-22, Sat-Sun 10-22

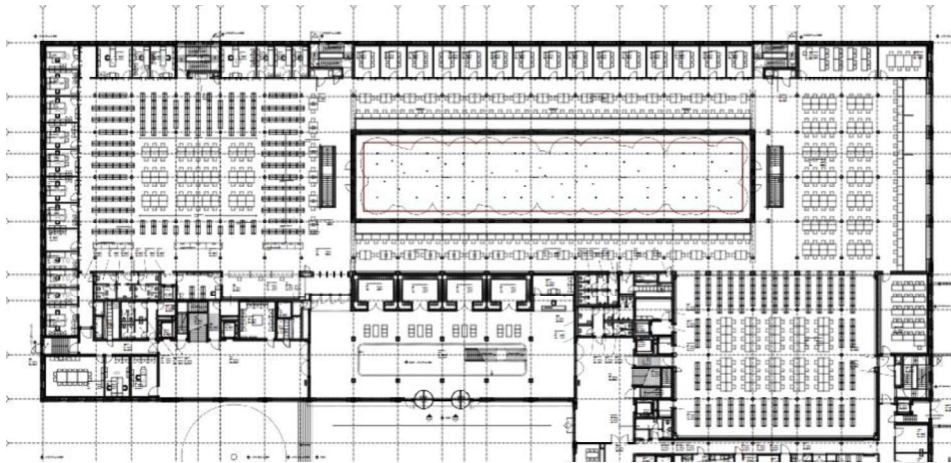




# Library of Law and Economics

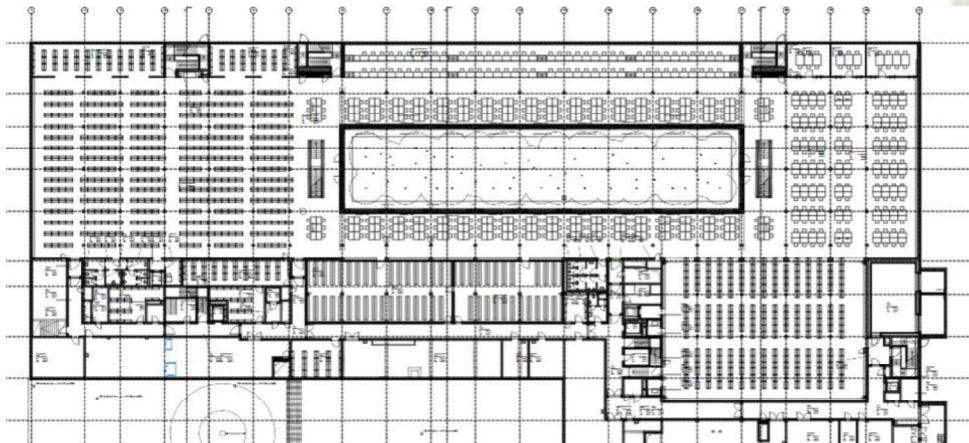


## Ground Floor and Basement





## Library of Law and Economics



## Library of Natural Sciences



Opening: 2011

Floor area: 2.878 m<sup>2</sup>

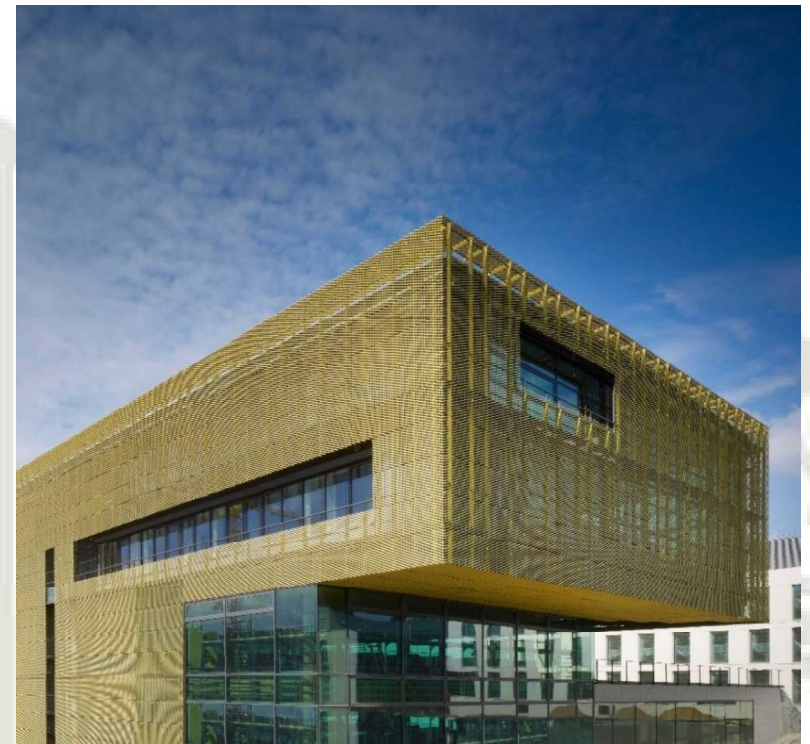
Students: ca. 4.500

User seats: 330

Shelf capacity: 300.000

Staff: 4,4 FTE

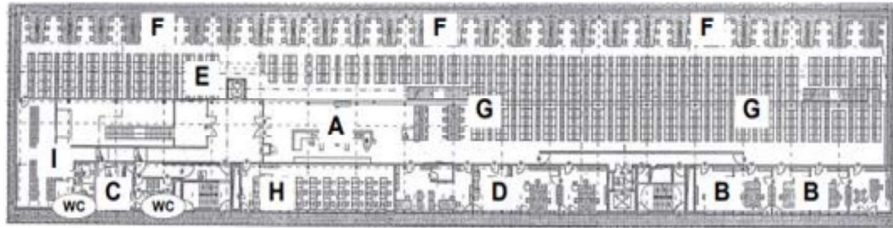
Opening hours: Mon-Fri 8-20, Sat 10-16



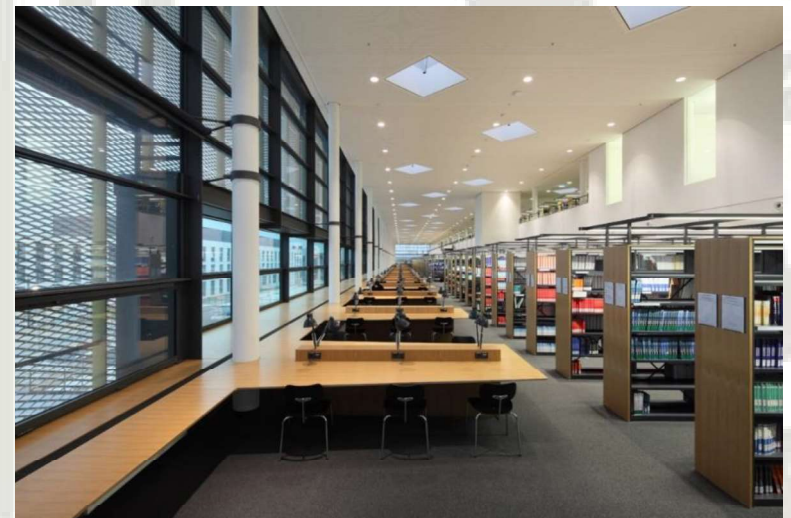
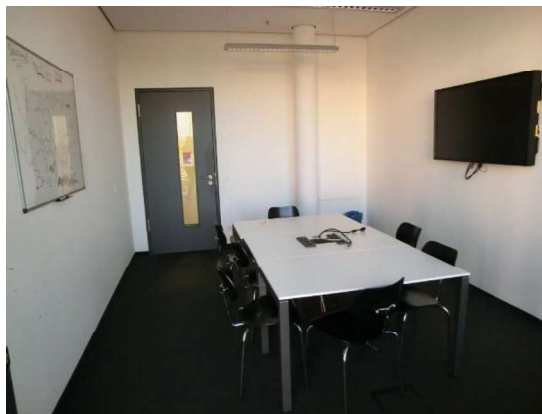
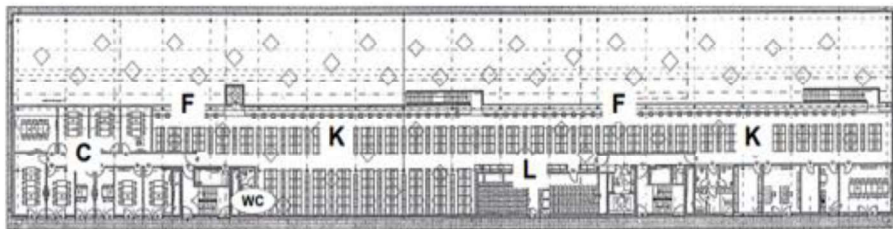




2nd Floor



3rd Floor





## Library for Social Sciences and Psychology



Opening: 2013

Floor area: 3.500 m<sup>2</sup>

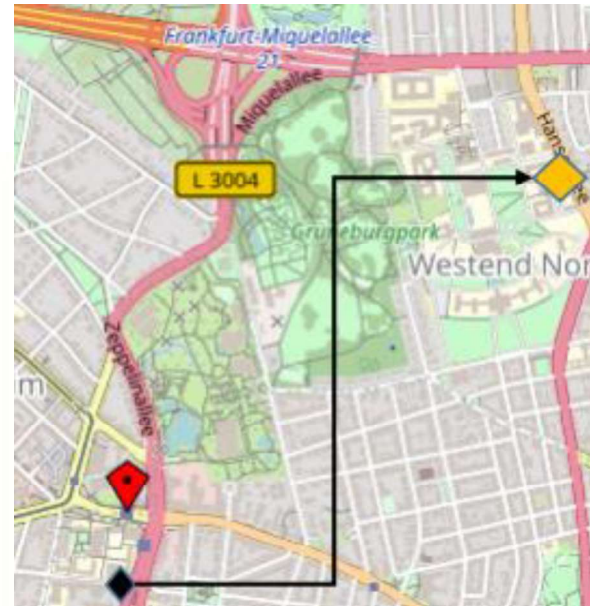
Students: ca. 8.000

User seats: 470

Shelf capacity: 500.000

Staff: 15,3 FTE

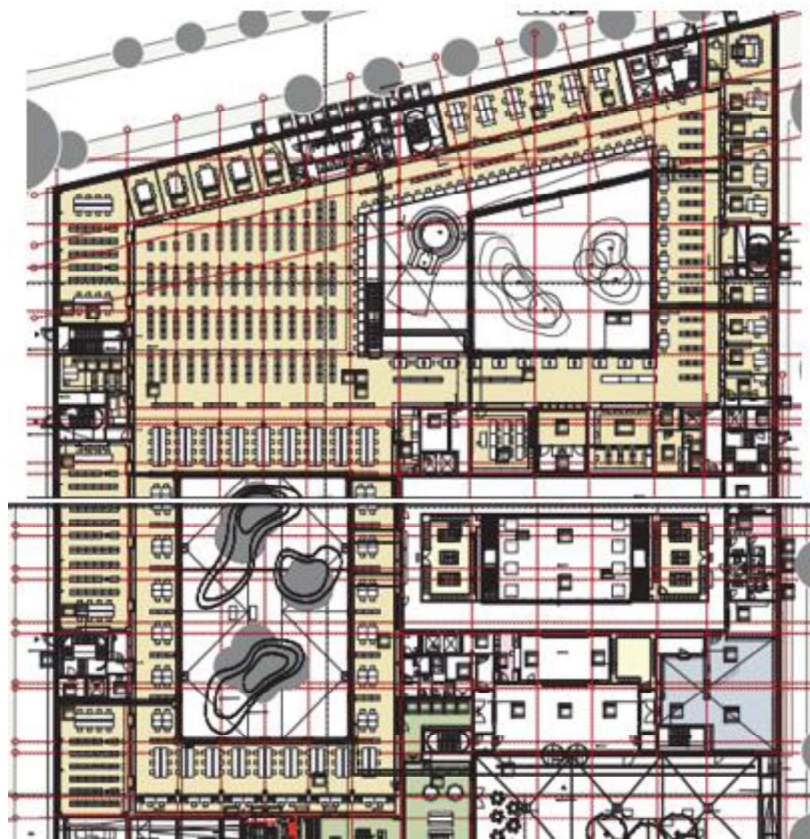
Opening hours: Mon-Fri 8-22, Sat 10-18



# Library for Social Sciences and Psychology



## Groundfloor

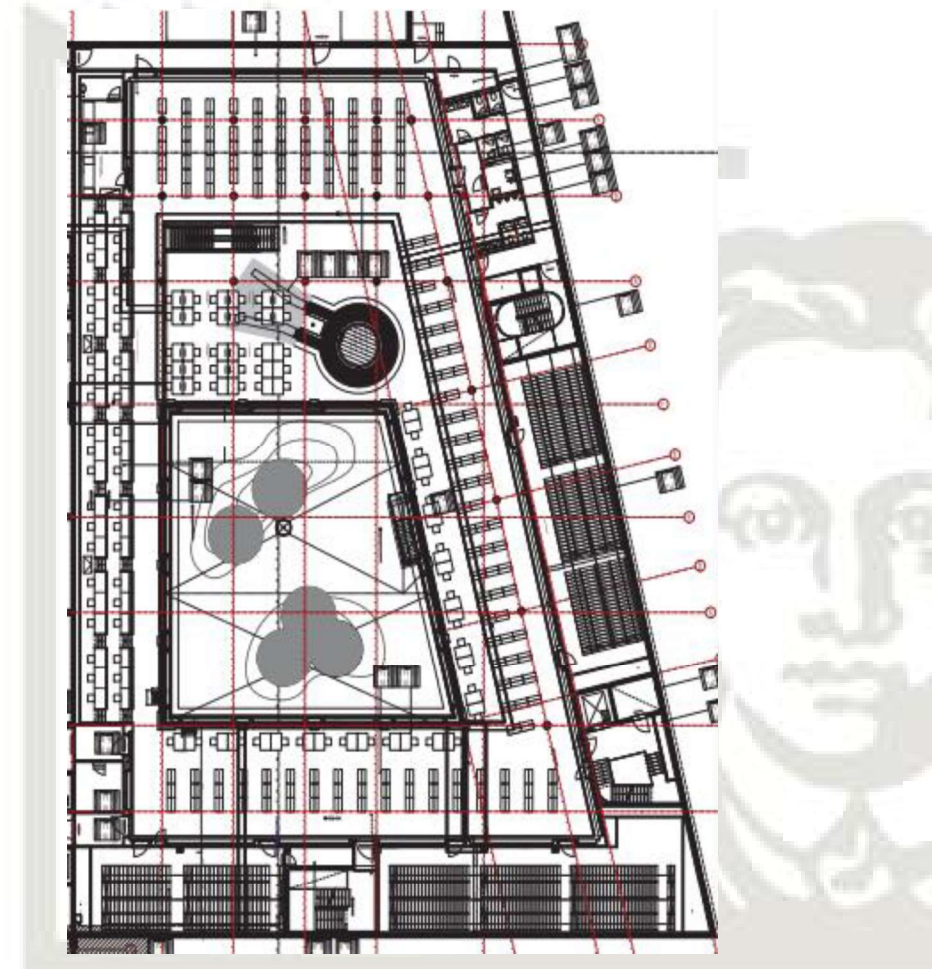




# Library for Social Sciences and Psychology



## Basement





## Library of Linguistics, Culture and Arts



Opening: 2022

Floor area: 3.400 m<sup>2</sup>

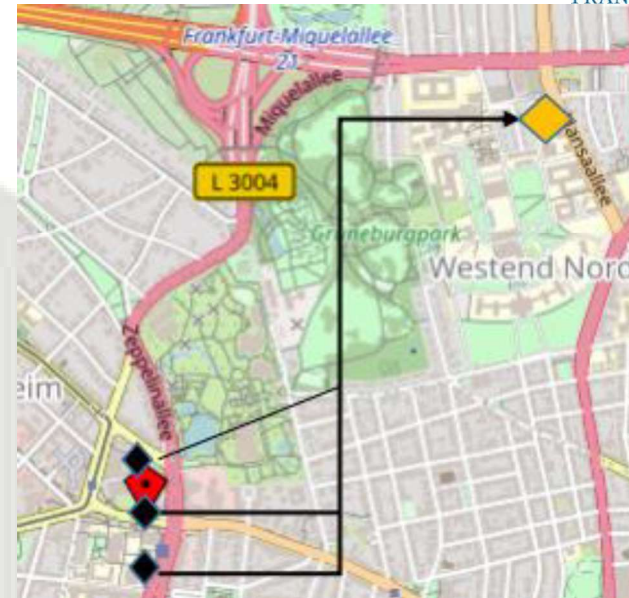
Students: ca. 2.500

User seats: 350

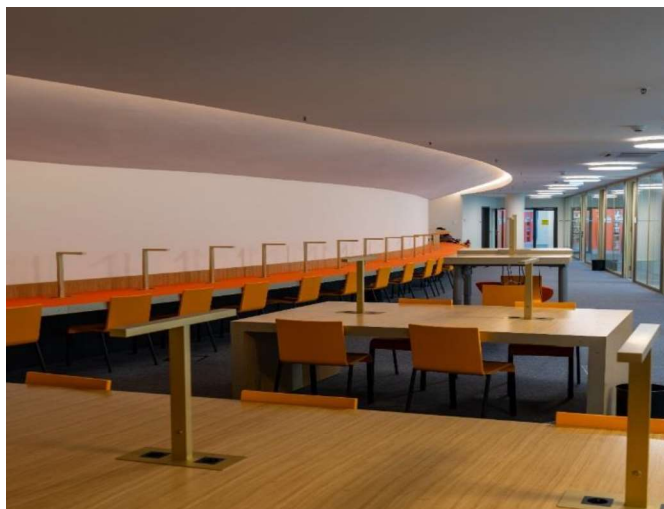
Shelf capacity: 385.000

Staff: 9,3 FTE

Opening hours: Mon-Fri 8-20, Sat 10-18

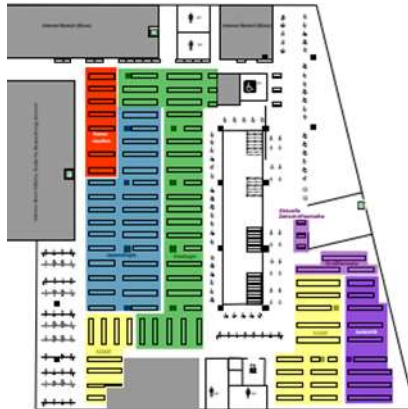


## Library of Linguistics, Culture and Arts

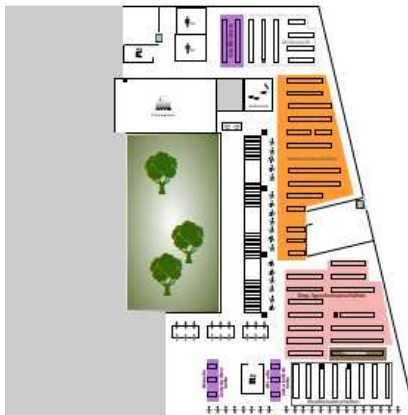




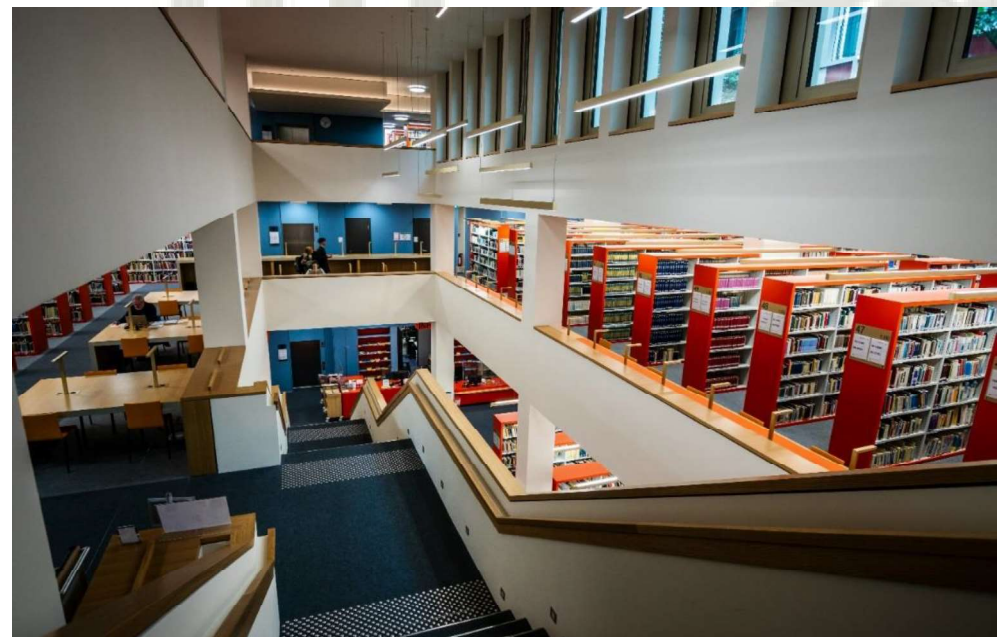
# Library of Linguistics, Culture and Arts



1.0G



2. OG





## Lessons learned and what's about the Central Library?

Lessons learned:

- Not as flexible as we would have liked
- 7 large locations => staff is necessary for daily work

### Central Library

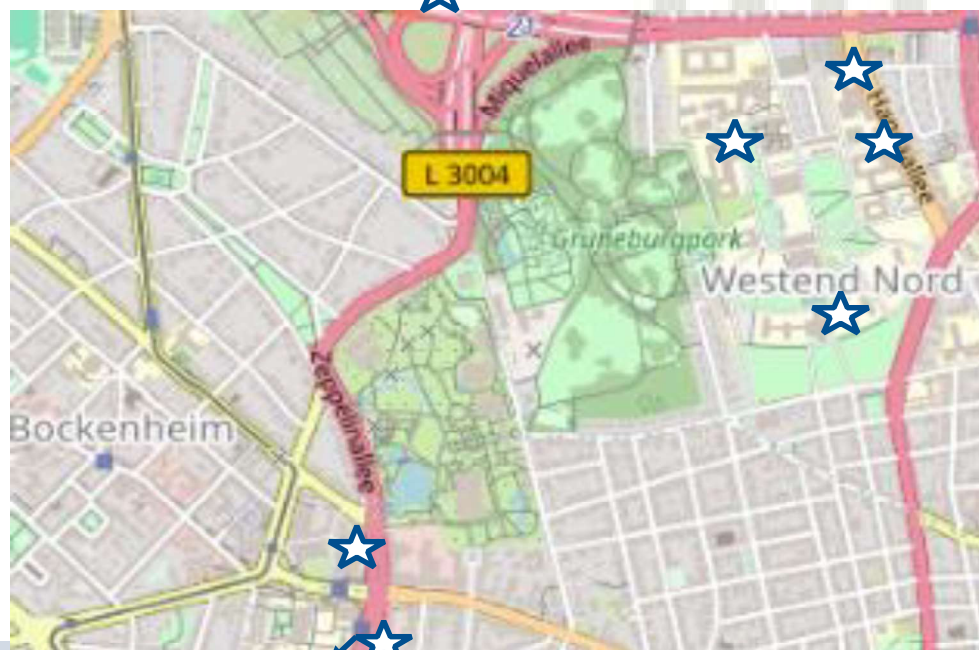


Opening in 1964...



## Summary: Branch Libraries 2001-2022

- Humanities Library 2001 – renovation
- Medical Library 2001 - renovation
- Library of Law and Economics 2008 – new faculty building
- Library of Natural Sciences 2011 – new infrastructure building
- Library for Social Sciences and Psychology 2013 – new faculty building
- Library of Linguistics, Culture and Arts 2022 – new faculty building





## University Library Johann Christian Senckenberg - today

- University Library with 10 locations
- Visitors: 1,9 Mio. (2023)
- Staff: 209 FTE and about 160 student assistants

### **Some topics of our tasks**

Acquisition, Cataloguing, Circulation, Cultural heritage, Digital Humanities, Digitization, Document Delivery, Information, IT-Services, Licensing, Metadata, National and regional services, Open Access, Preservation, Public Relations and exhibitions, Research Data Management, Special collections, Storage,...

### **Strategic process of transformation**

- Started in 2021
- 2022: Vision => „We are a HUB for people, knowledge and services at the Goethe-University“

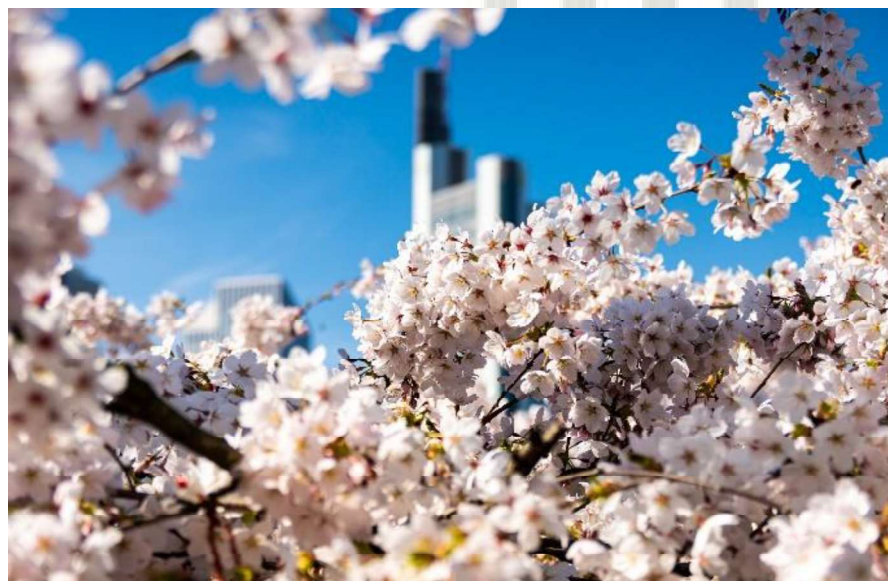
# Further Development

- Reorganisation in 2023
  - Branch libraries are integrated into a new Department: Learning Spaces and Academic Support
- Further development of the branch libraries: New services in the fields of
  - Digital Humanities
  - Research Data management
  - Open Access
- In the next years we try to get some capacity of staff by
  - Further Automatization
  - „Come together“ in the field of aquisition and metadata



If you are interested  
in the branch libraries or the further development of  
our University Library:

Visit us in Frankfurt! - You are welcome!



## Picture credits

### Maps:

- Open Street Map (p. 3, 5-6, 10, 13, 15, 18, 22)

### Layouts

- Hess. Baumanagement (p. 11-12, 14, 16-17)

### Pictures:

- Dr. Thomas Risse, University Library J.C. Senckenberg (p. 3, 10, 19-20, 25)
- Helmut Schilling, University Library J.C. Senckenberg (p. 6, 10, 15, 18)
- University Library J.C. Senckenberg (p. 4-8, 11-12, 15-21)
- Goethe-University (Marketing and Communication): (p. 10, 13)
- Gerber-Architects (p. 13-14)