

# **Manchester Metropolitan University Library Transformation Liber LAG Seminar 2024**



**Hawkins\**  
**Brown**

**SCHMIDT**  
**HAMMER**  
**LASSEN**



**Rachel Beckett**  
Manchester Metropolitan  
University



**Katie  
Tonkinson**  
Hawkins\Brown



**Morag Morrison**  
Hawkins\Brown Interior  
Design



**Amber Bowie**  
Schmidt Hammer  
Lassen



## OUR PEOPLE

**41,000+** **340,000**

STUDENTS - 4,000+  
INTERNATIONAL ALUMNI ACROSS  
170 COUNTRIES

**5,100+**  
EMPLOYEES



## OUR STRATEGY

### OUR PURPOSE

Transforming lives through the power of education and research

### OUR AMBITION

We will harness our creativity and confidence to enrich our students' lives, raise the impact of our excellent education and research, and project its application to Manchester and the world

### OUR VALUES

Student-centred, People-led, Future focussed, Inclusive,  
Manchester Met, Proud



## DELIVERING EXCELLENT EDUCATION

TOP UNIVERSITY FOR UK  
UNDERGRADUATE APPLICATIONS 2022

**81%**  
STUDENT  
SATISFACTION  
(NSS2023)

**375**  
COURSES  
ACROSS FOUR  
FACULTIES

**£400m**

INVESTMENT IN  
STATE-OF-THE-ART CAMPUS 2017-24



## INNOVATION AND PARTNERSHIPS

### INTERNATIONAL EDUCATION PARTNERSHIPS:

- Joint Institute with Hubei University, China
- British University, Egypt



### TOP 5 UNIVERSITY FOR KNOWLEDGE TRANSFER PARTNERSHIPS

Leading the  
Government's  
High Street  
Task Force

Leveraged £45m of funding to help SME's to thrive



## SUSTAINABILITY



Top 3 sustainable  
University ten years  
(People & Planet league)

Committed to  
be zero carbon  
University  
(scope 1&2 emissions)

**2038**



Author GM  
Hydrogen and  
Fuel Cell strategy



## ACCREDITATIONS AND AWARDS

WORLD TOP 150 TRIPLE-ACCREDITED BUSINESS SCHOOL



VOTED LEADING  
UNIVERSITY PROVIDER  
5 YEARS RUNNING

Ofsted 'outstanding'  
for degree  
apprenticeships



## DELIVERING RESEARCH WITH IMPACT



90%  
OF OUR RESEARCH IMPACT  
IS WORLD- LEADING OR  
INTERNATIONALLY EXCELLENT

### A TOP UK UNIVERSITY FOR RESEARCH POWER:

ART & DESIGN (2ND),  
SPORT (6TH), ENGLISH (8TH)  
EDUCATION (9TH) (REF21)





# OUR STRATEGY



## OUR PURPOSE

Transforming lives through the power of education and research.

## OUR AMBITION

We will harness our creativity and confidence to enrich our students' lives, raise the impact of our excellent education and research, and project its application to Manchester and the world.

## EDUCATION

Providing excellent education to transform our students' lives.

## RESEARCH

Delivering and applying excellent research to advance knowledge and tackle the grand challenges of our time.

## ENABLING STRATEGIES

- Great place to work
- Inclusive and diverse culture
- Leadership in sustainability and climate change
- Investment in our campus and digital infrastructure
- Engagement with businesses and strategic partners
- Internationalisation
- Reputation of our education and research
- Robust foundations

## OUR VALUES

Student-centered

People-led

Future-focused

Inclusive

Manchester Met Proud





## Library and Cultural Services





**Why do we need  
a new library?**





Repositioning – a reimagined library service



New Technologies



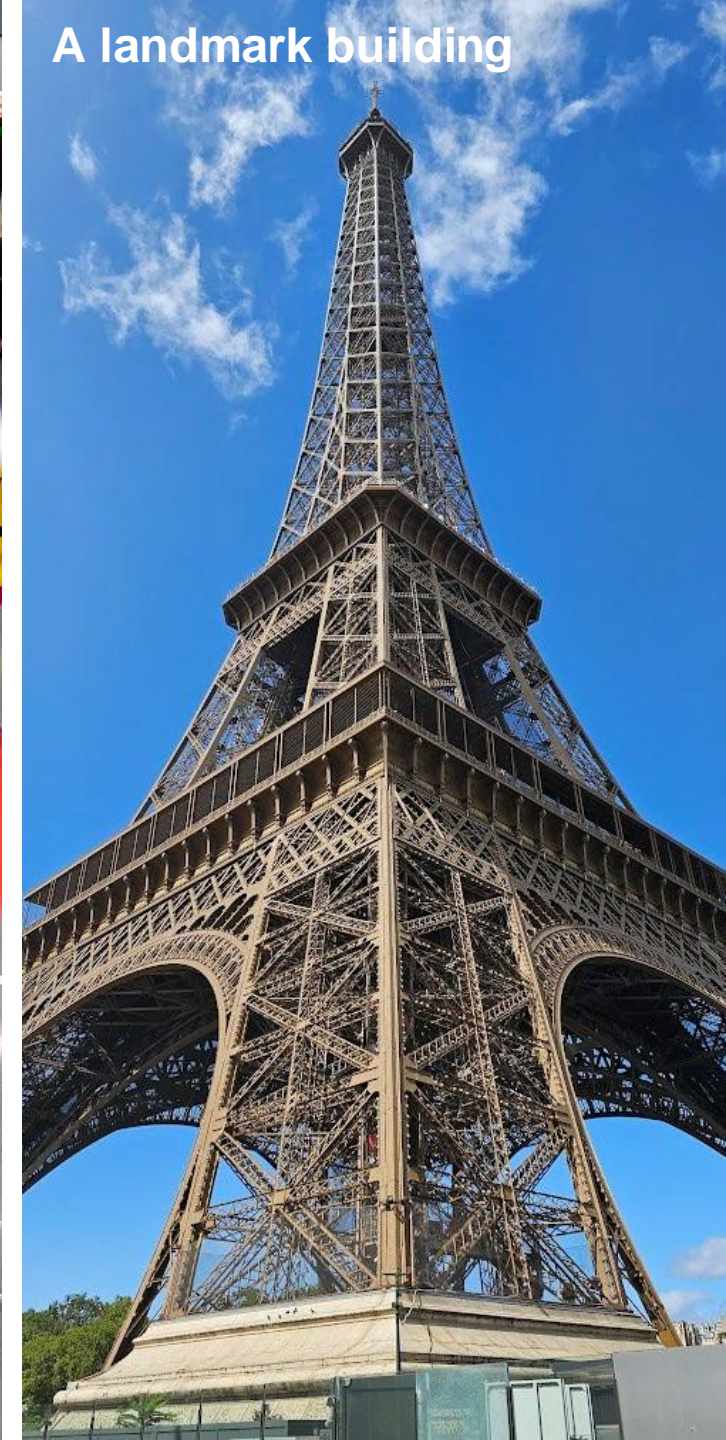
New ways of learning



Inclusive cultural spaces







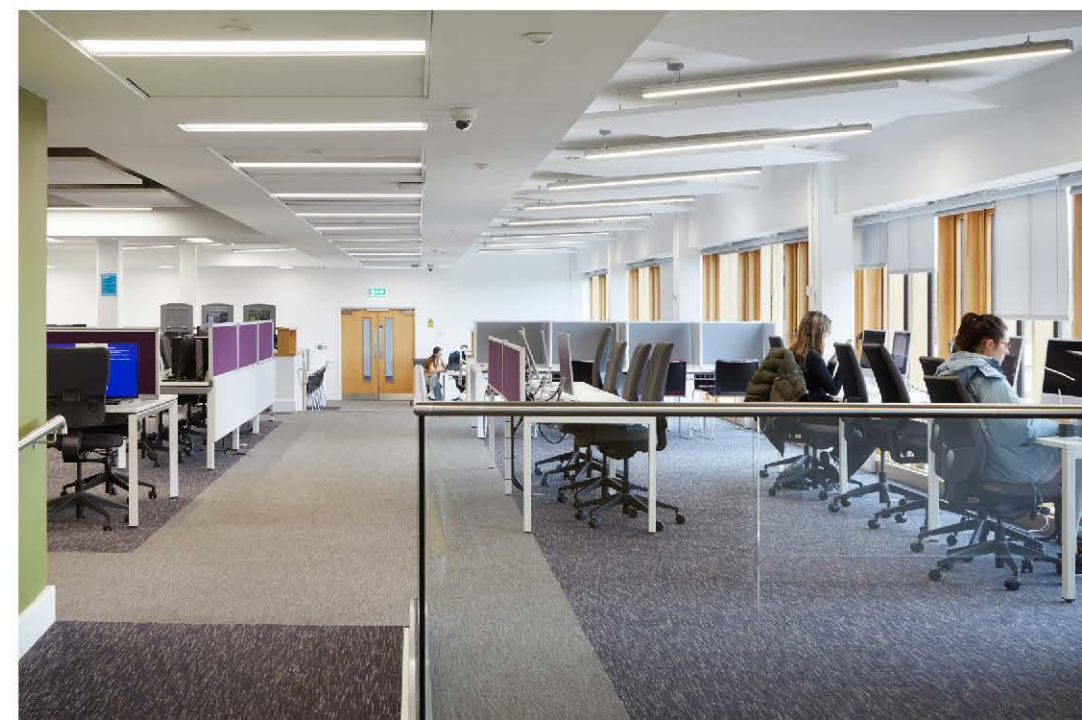


# The existing library















# The vision



# Defining the brief



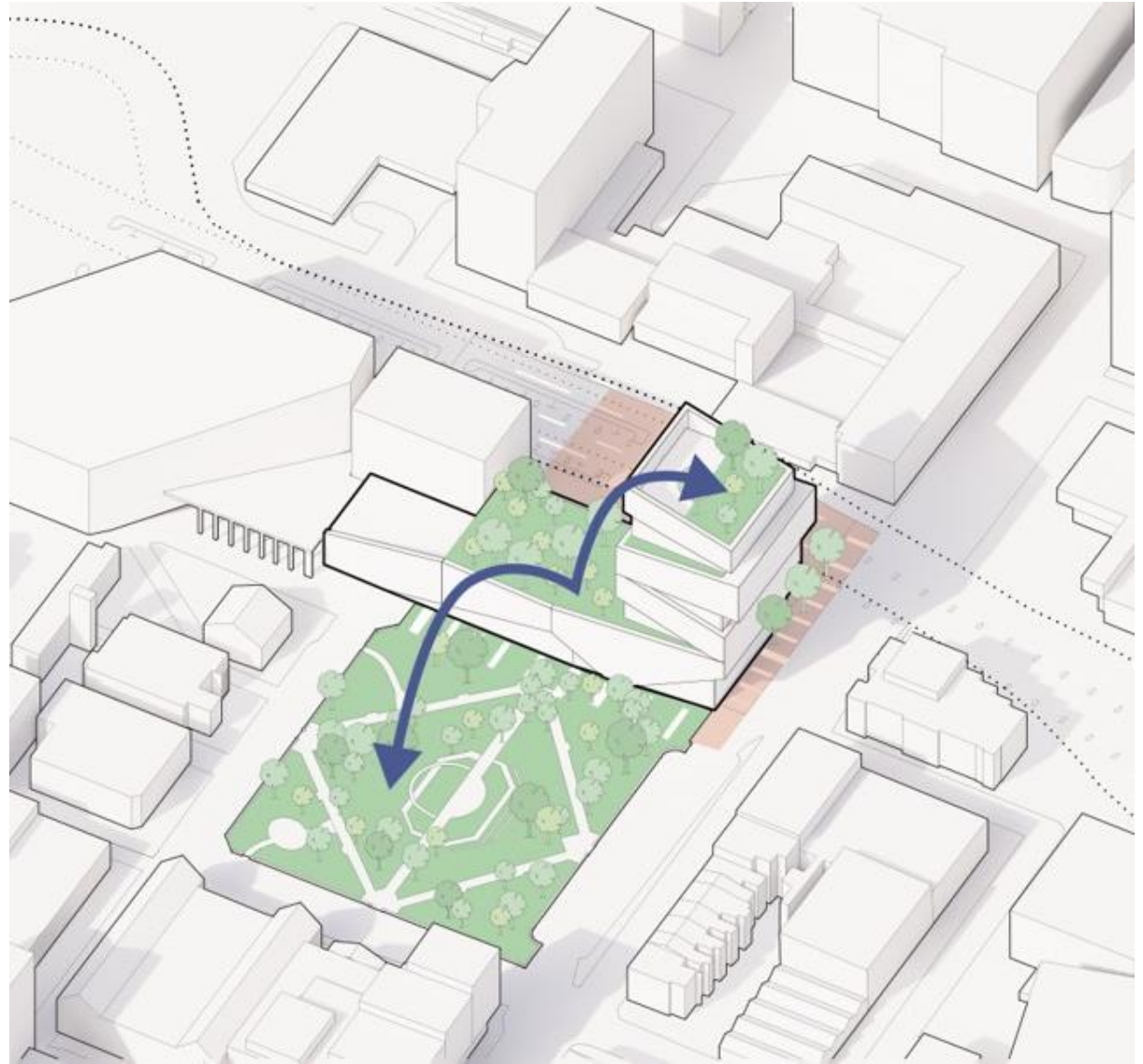
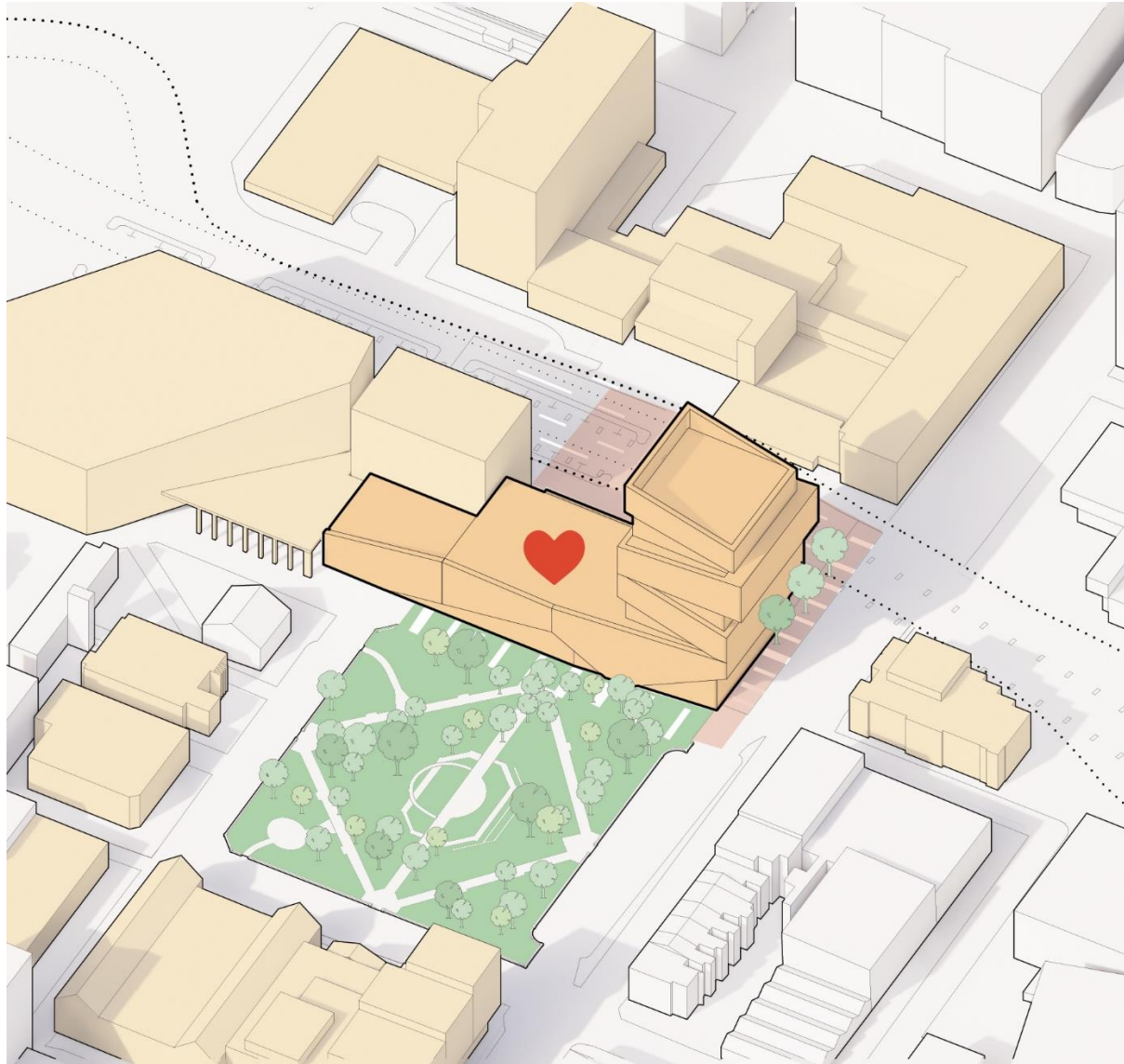




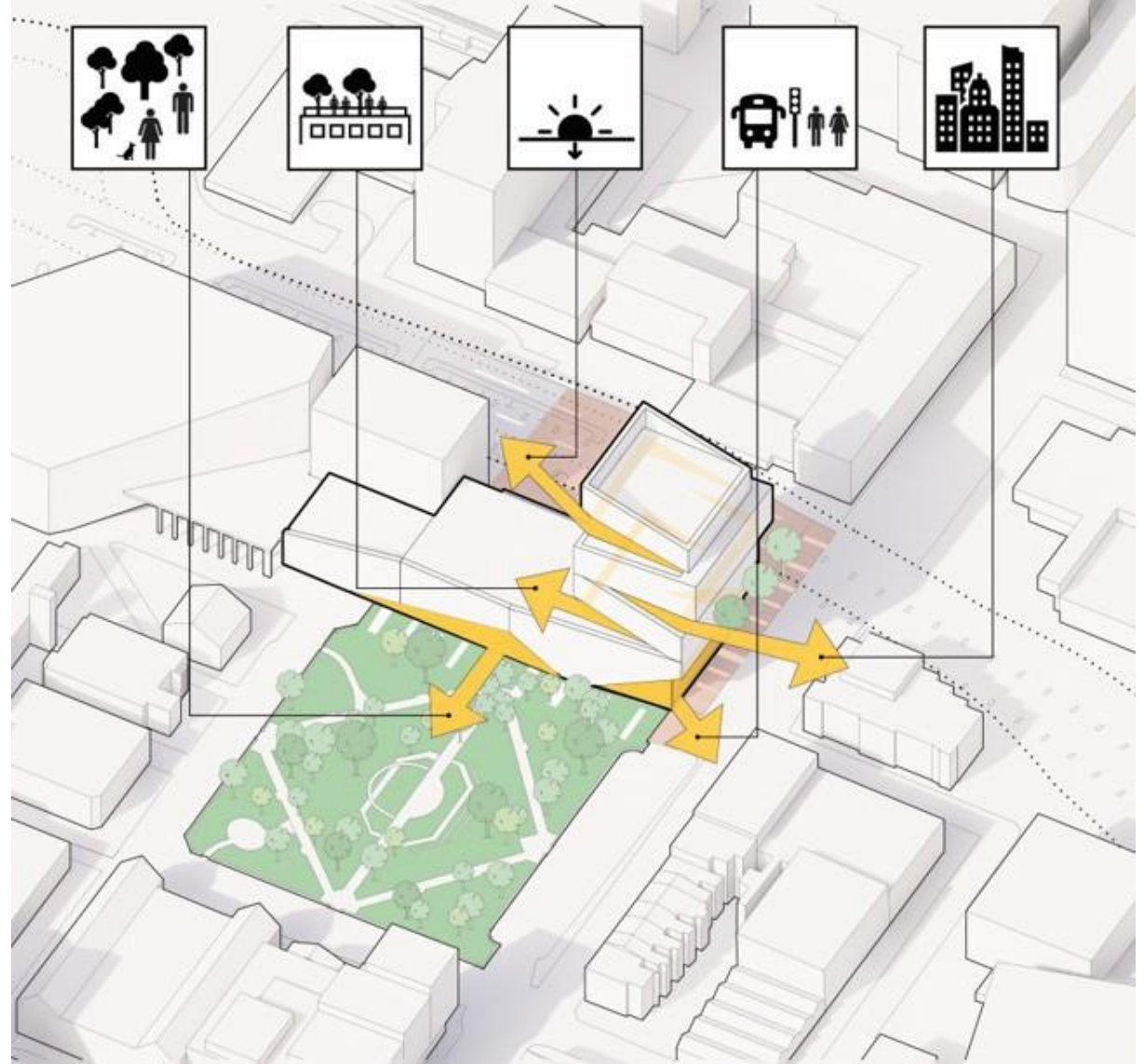
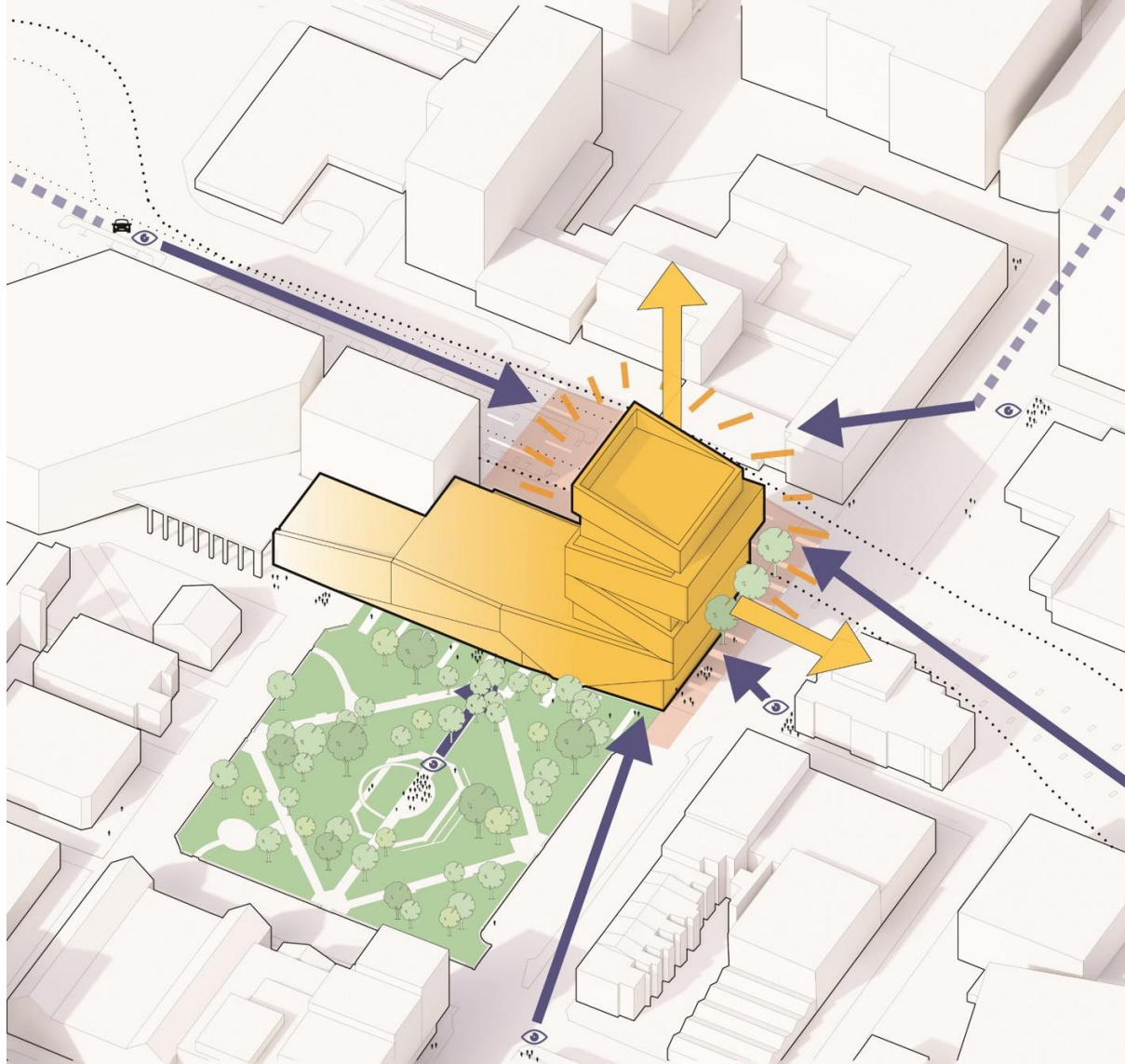












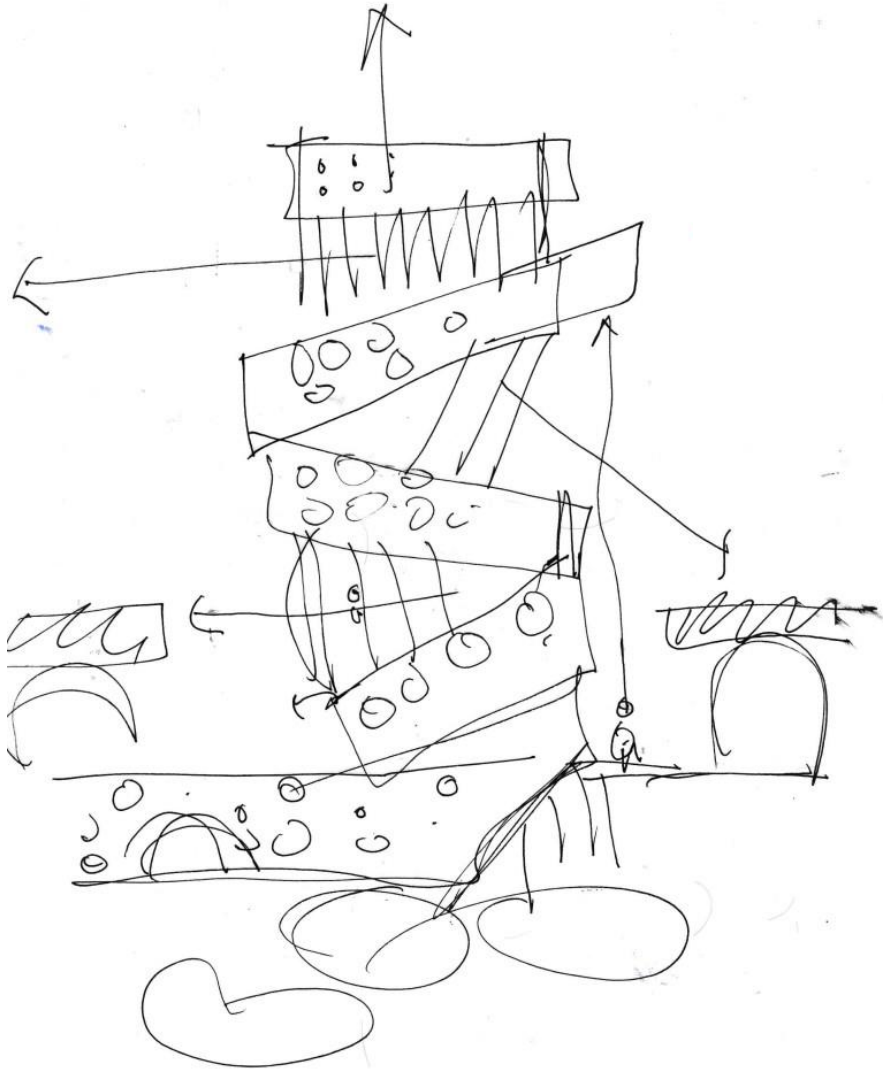














# Internal architecture





Manchester  
Metropolitan  
University

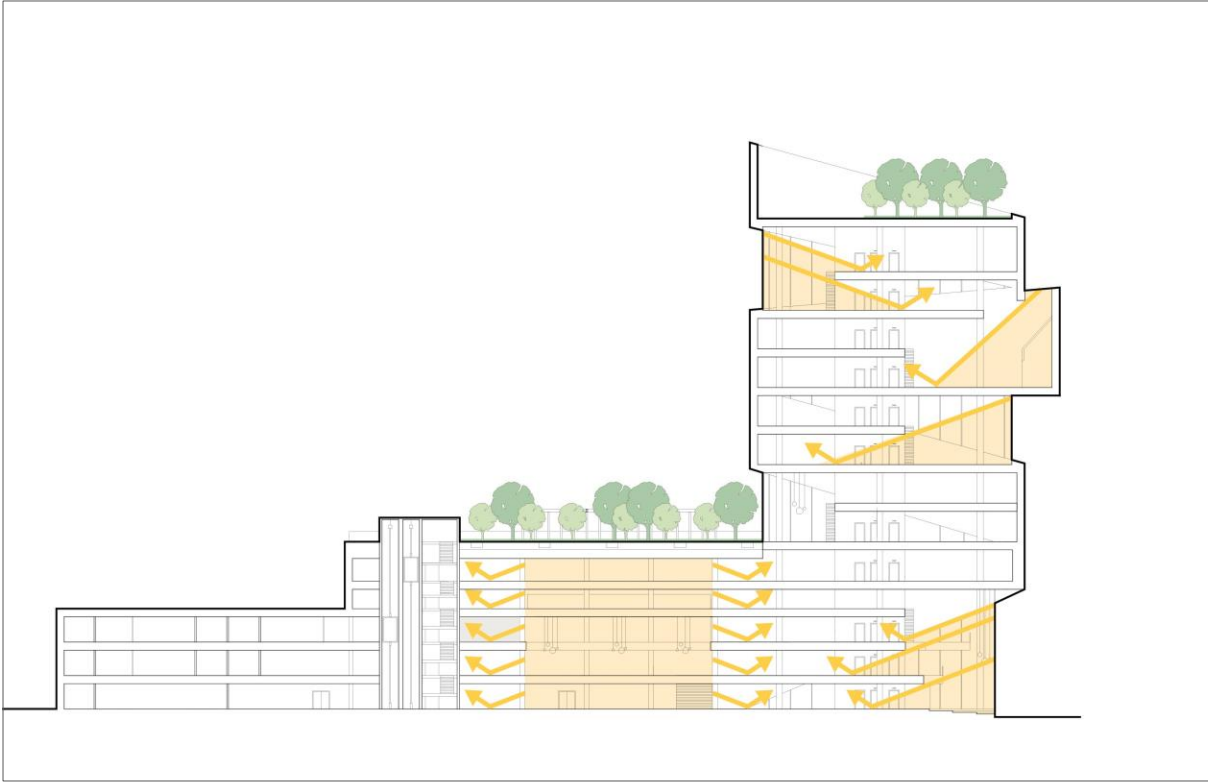
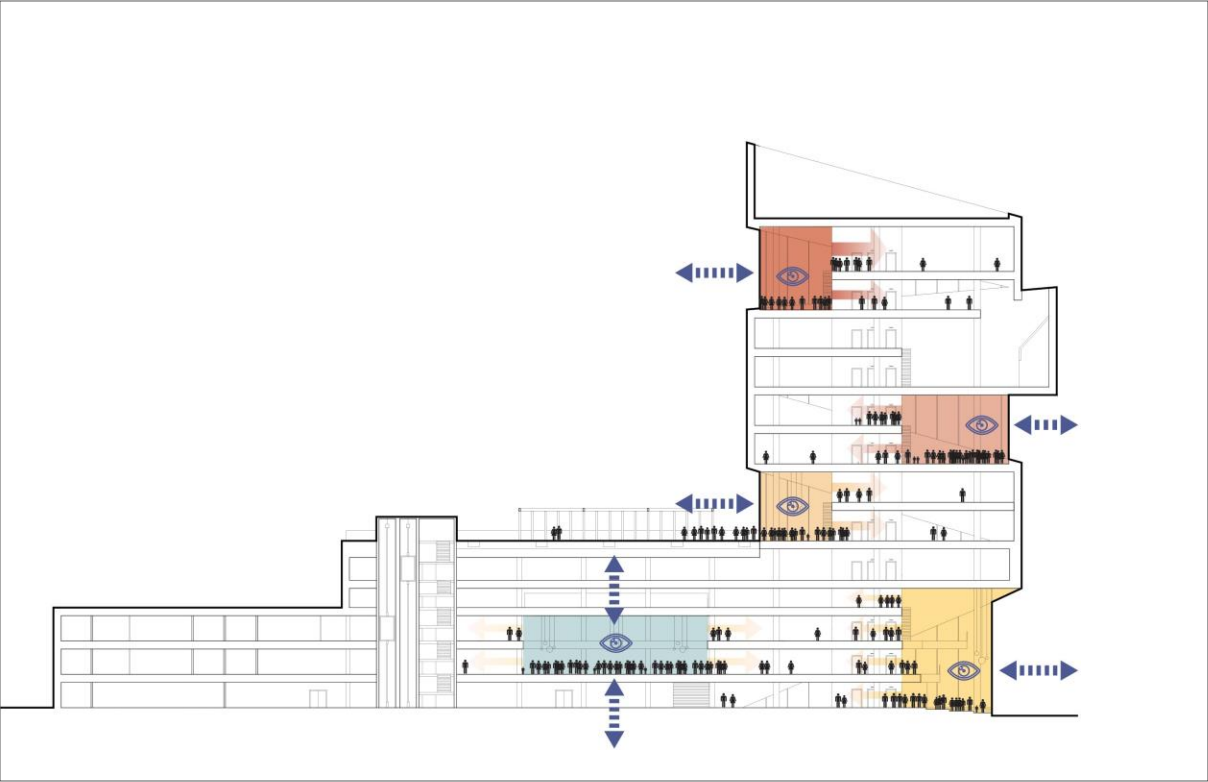
IDEAS

Listen



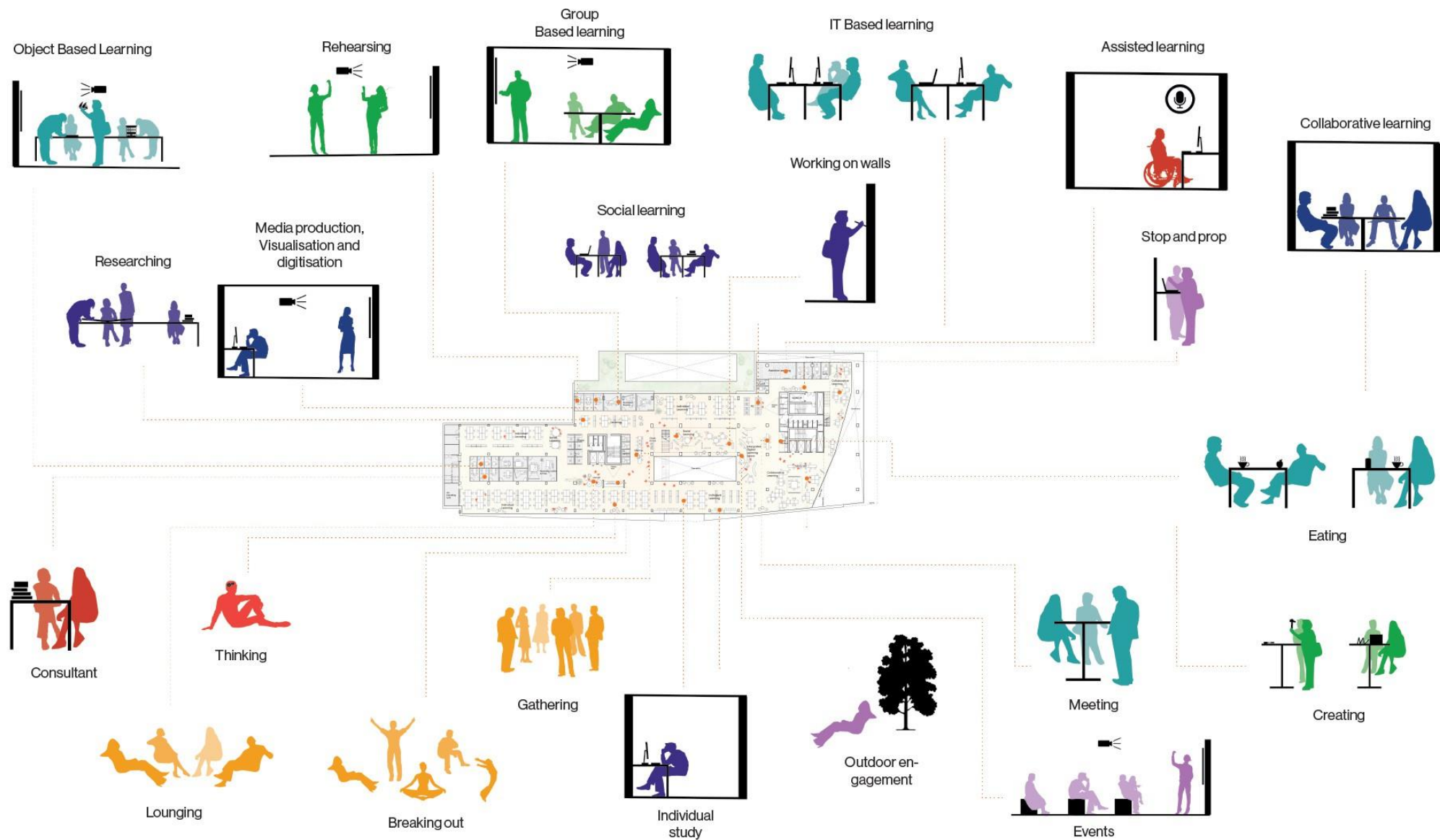


# Connection and Home



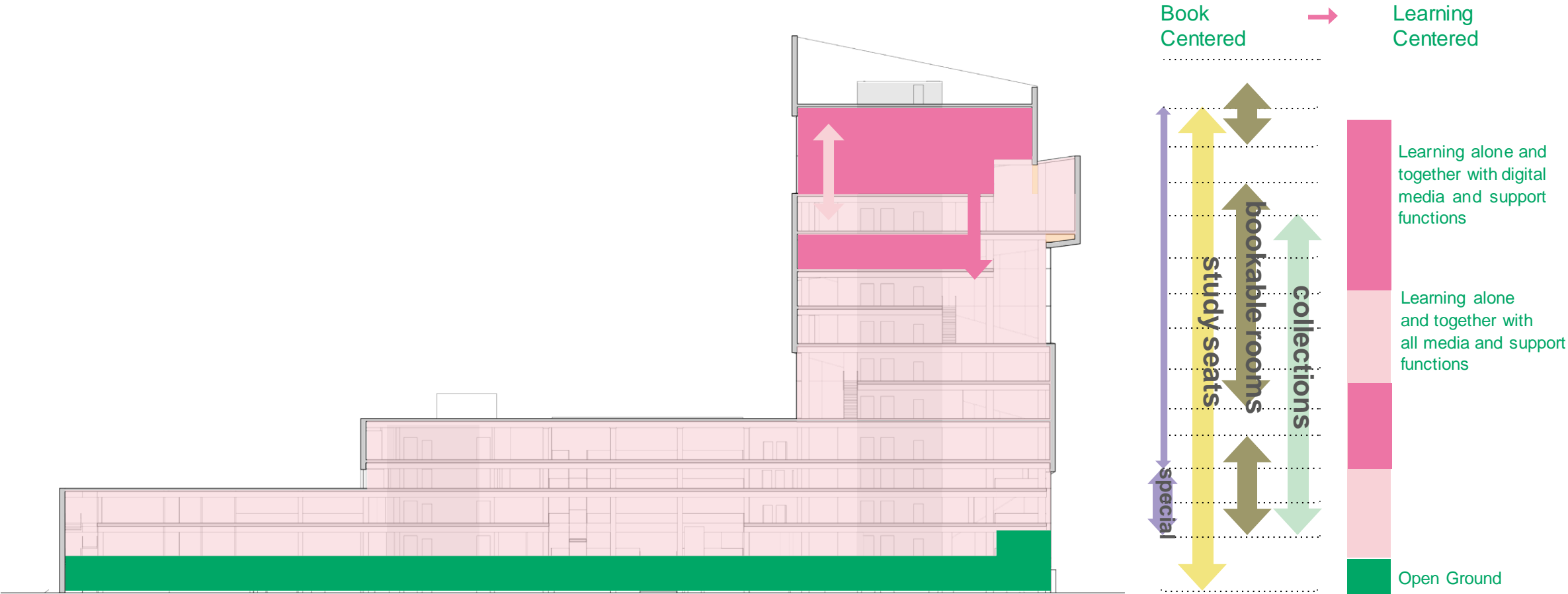


# Creative Library Landscape





# Modes of Learning

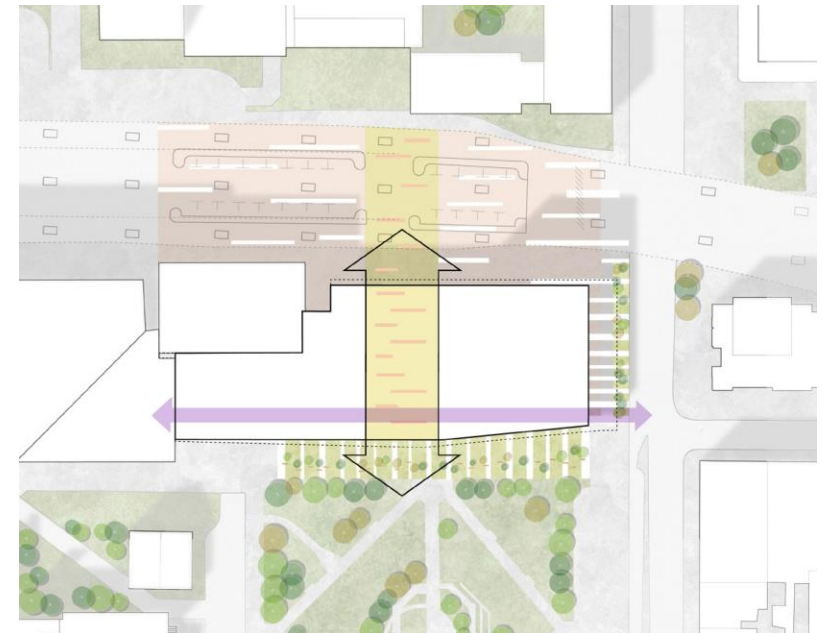
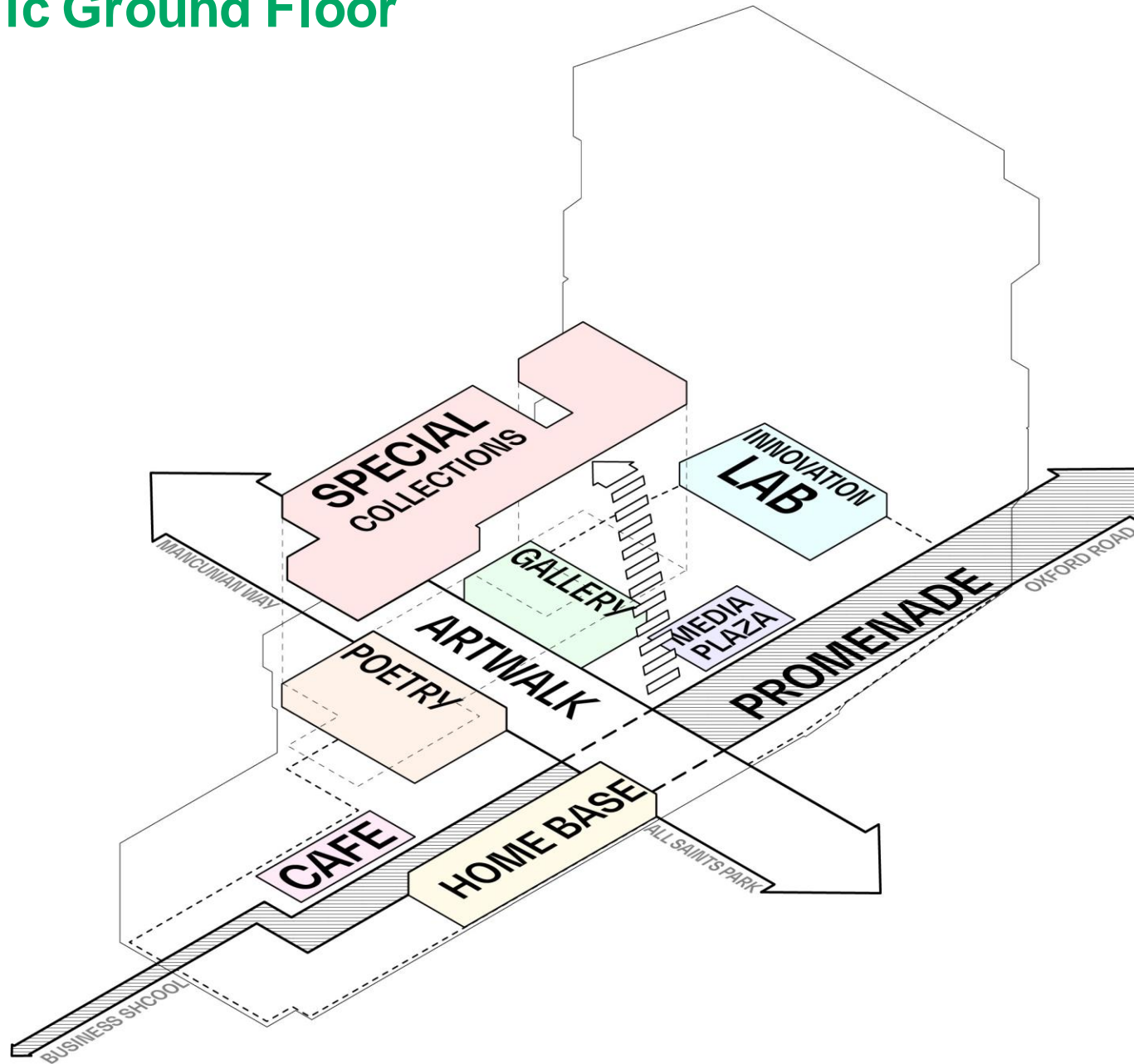








# Public Ground Floor













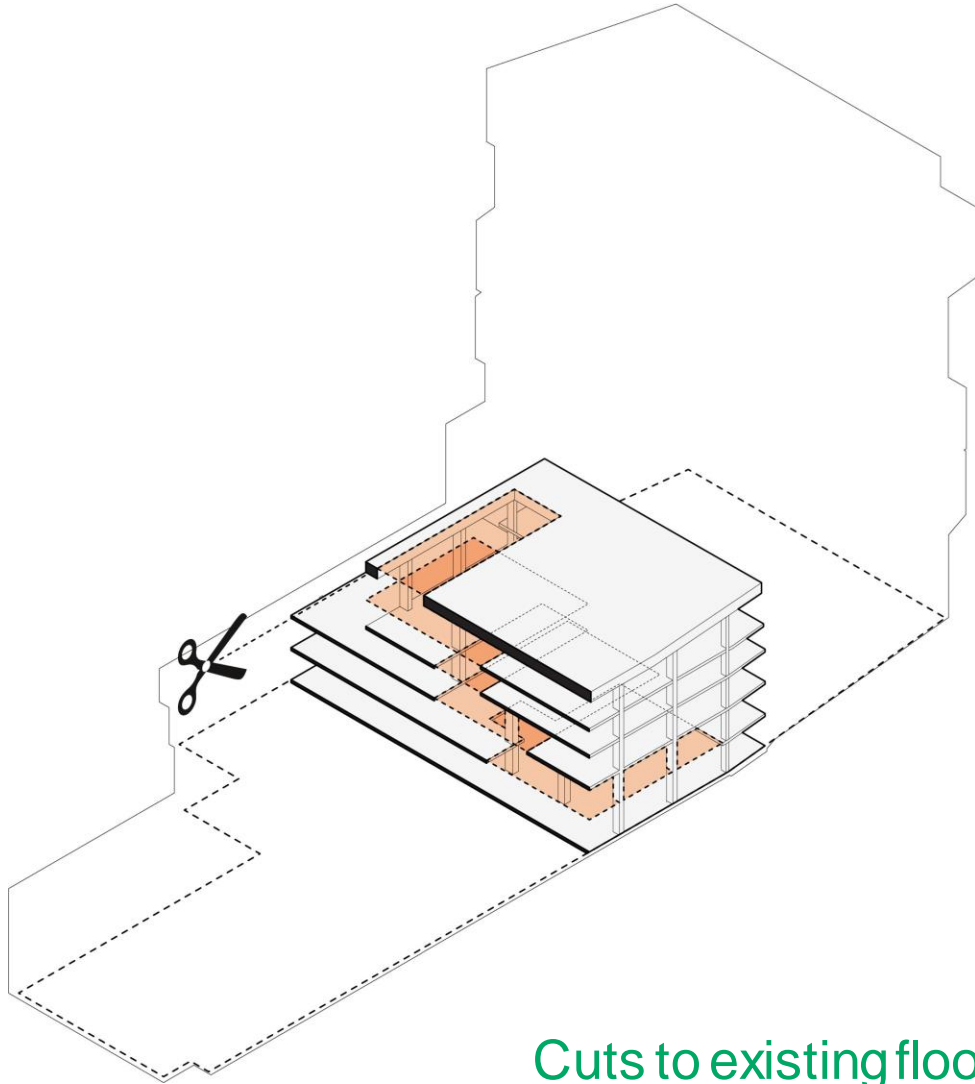




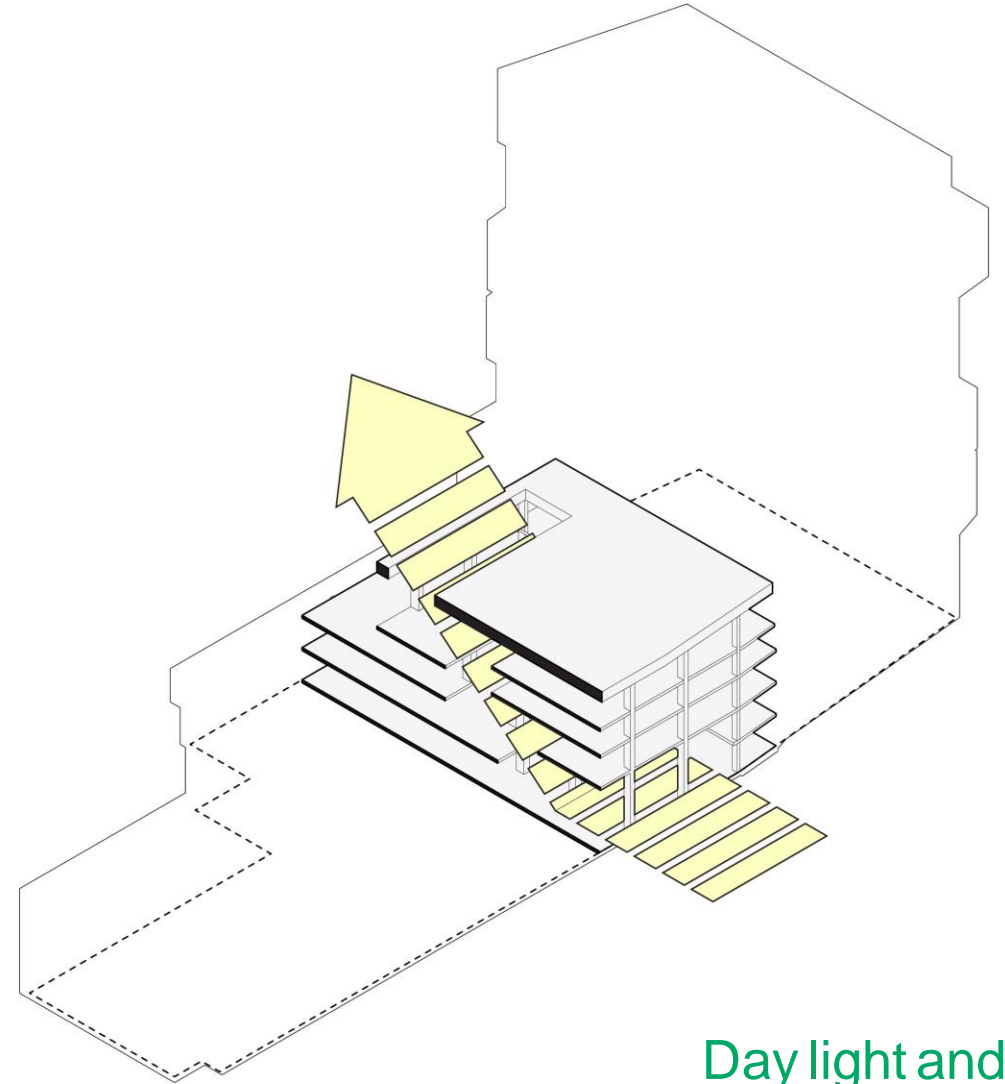




# Adaptive Transformation

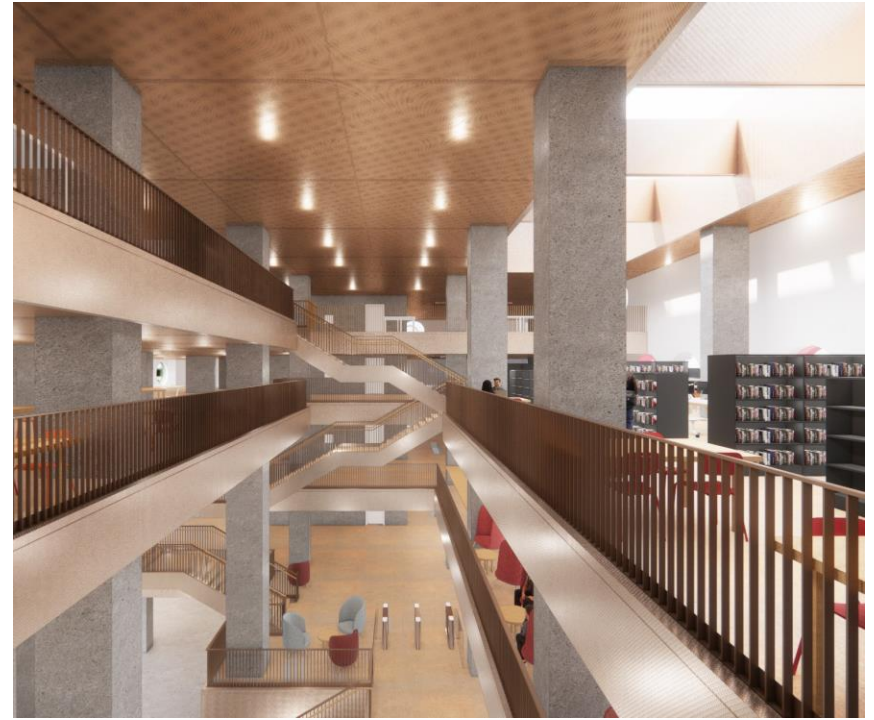


Cuts to existing floor  
slabs



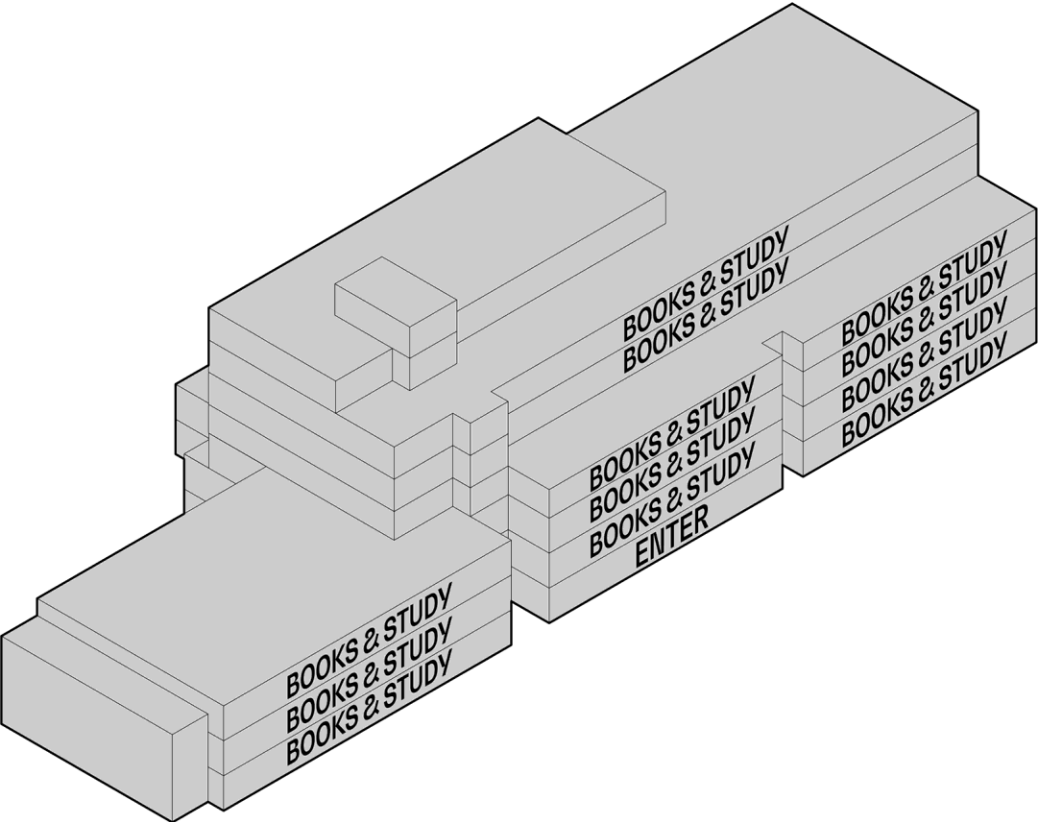
Day light and  
views



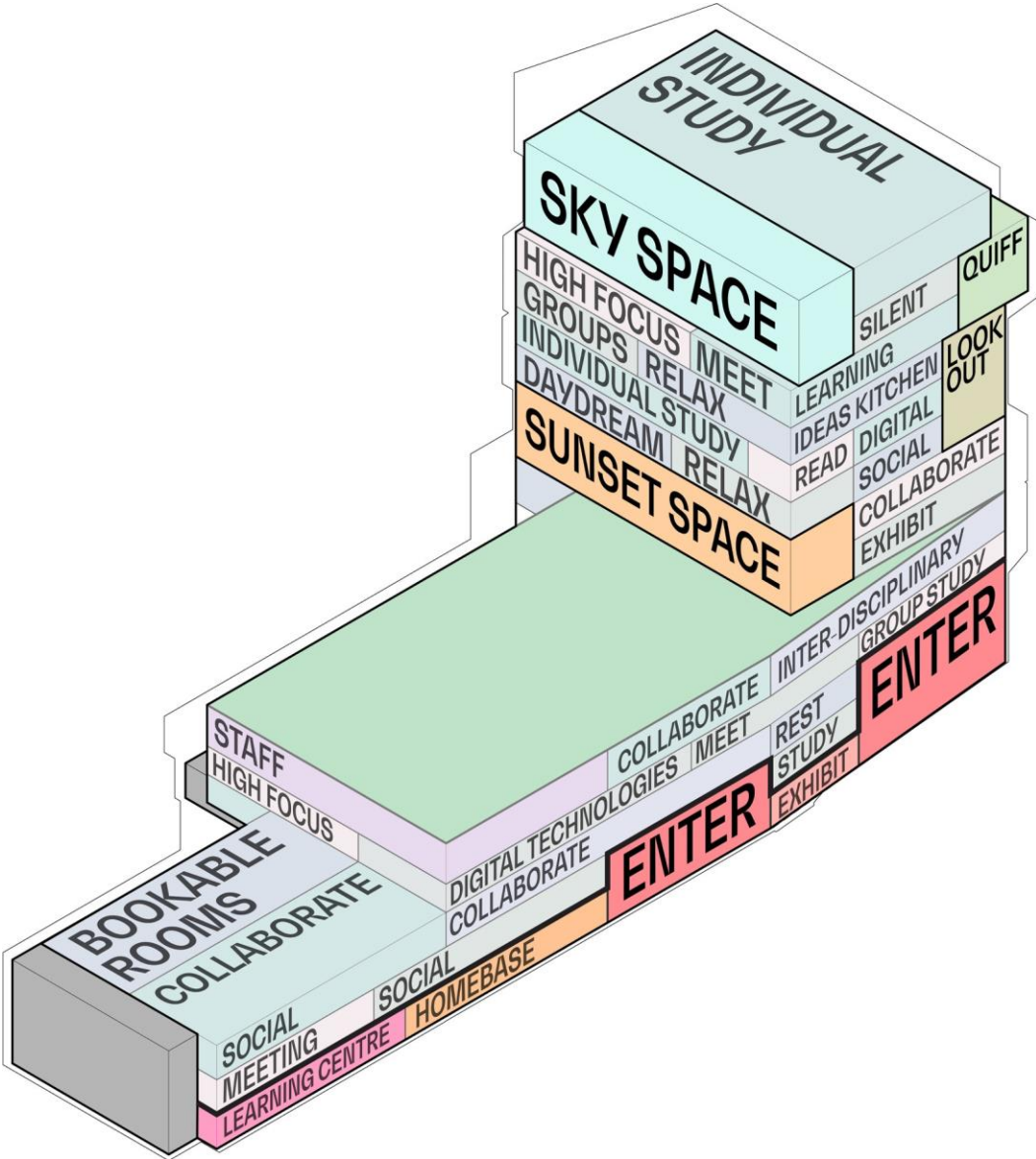




# Living Library



Existing

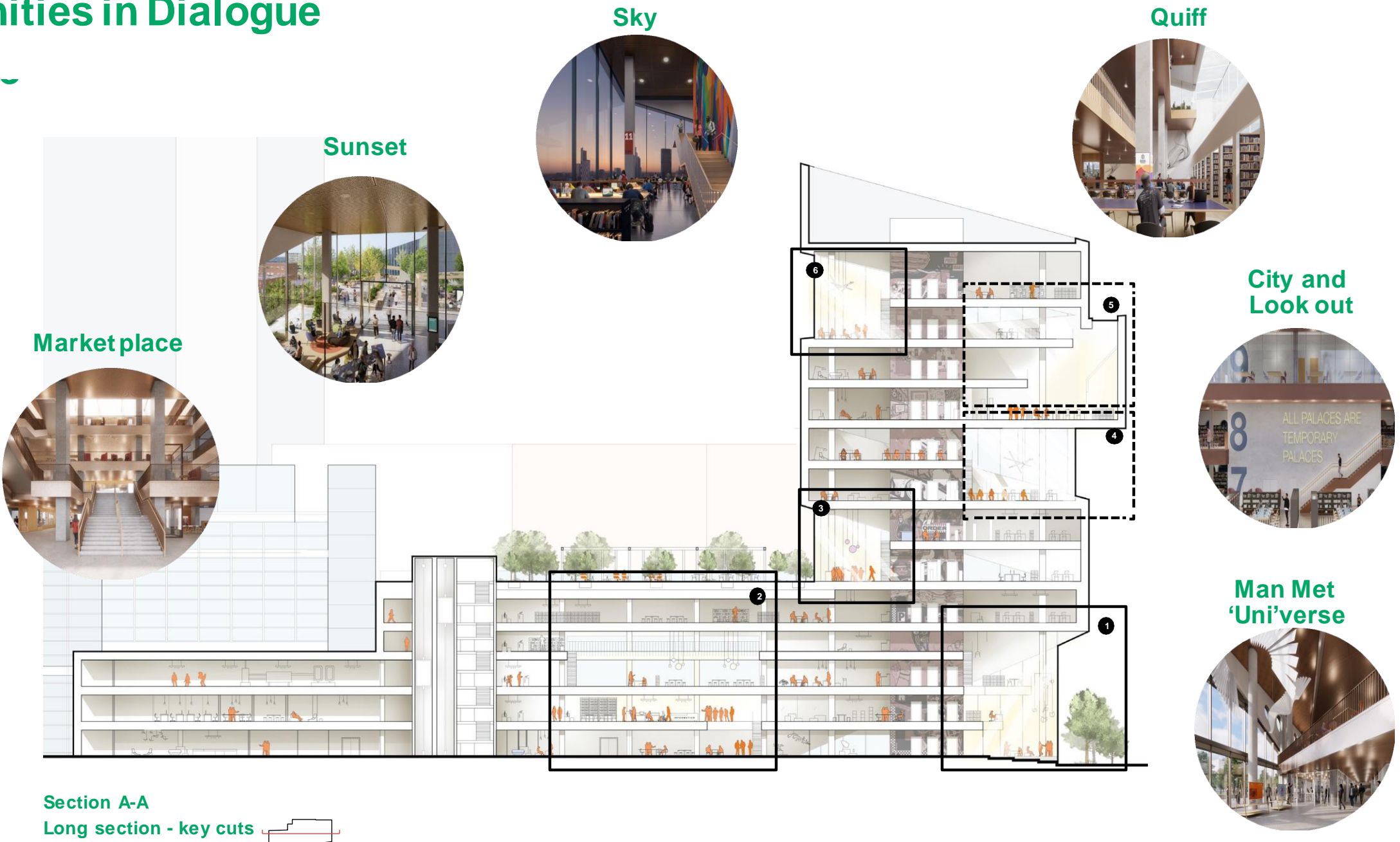


Proposed



# Communities in Dialogue

Dialogue





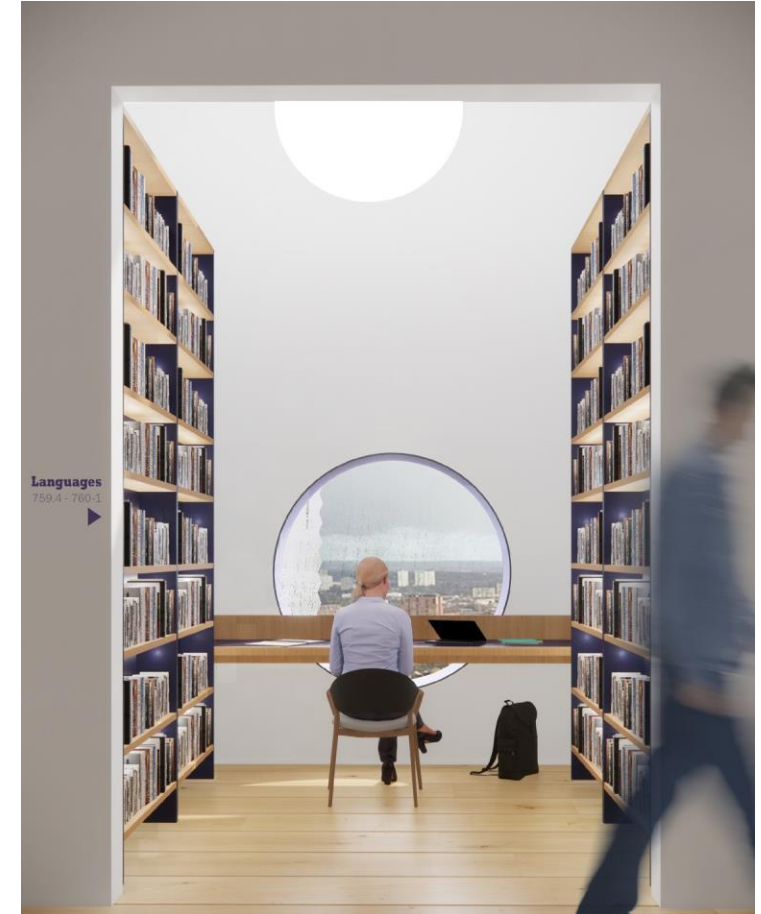
# The City and Lookout



ALL PALACES ARE  
TEMPORARY  
PALACES

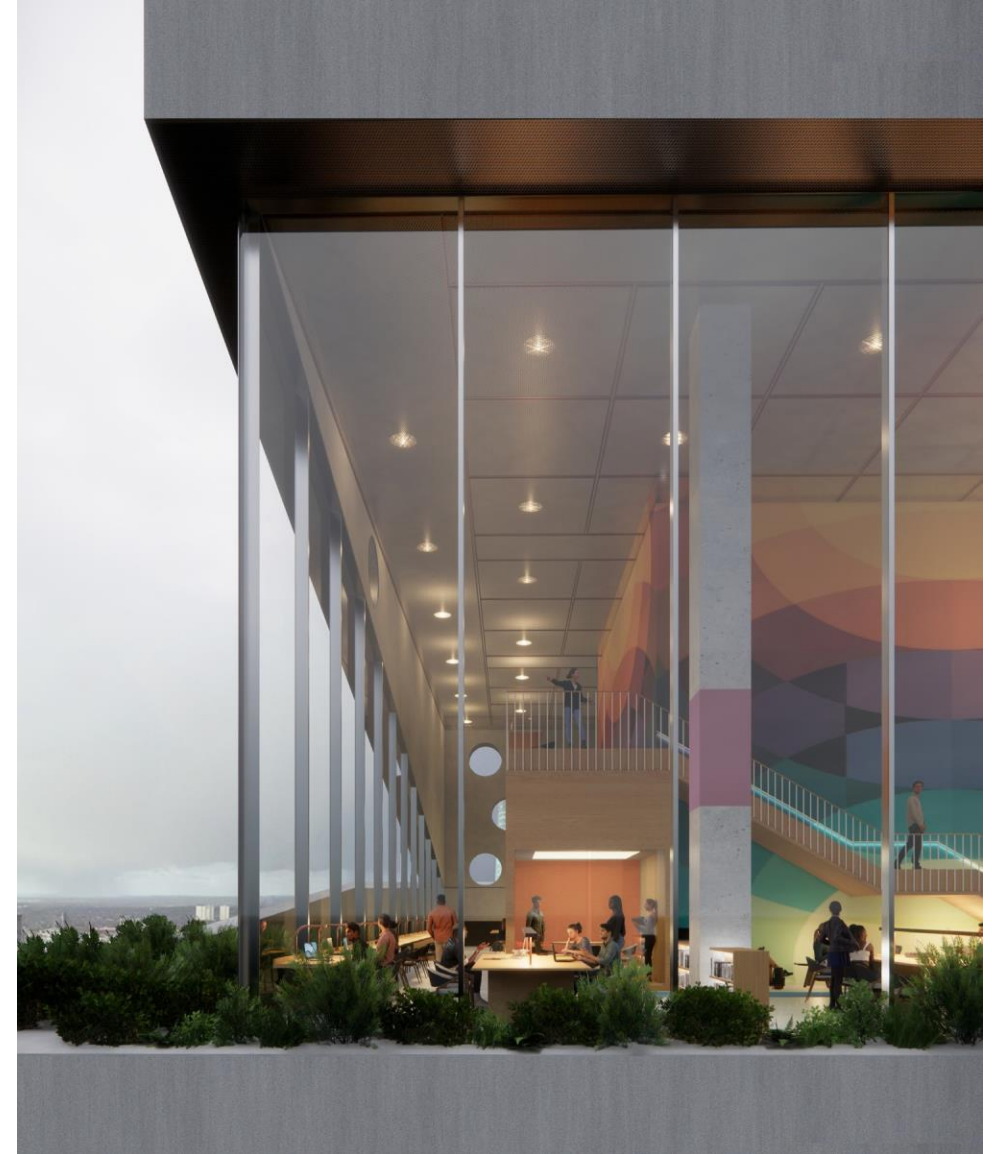


# The Quiff





# The Sky

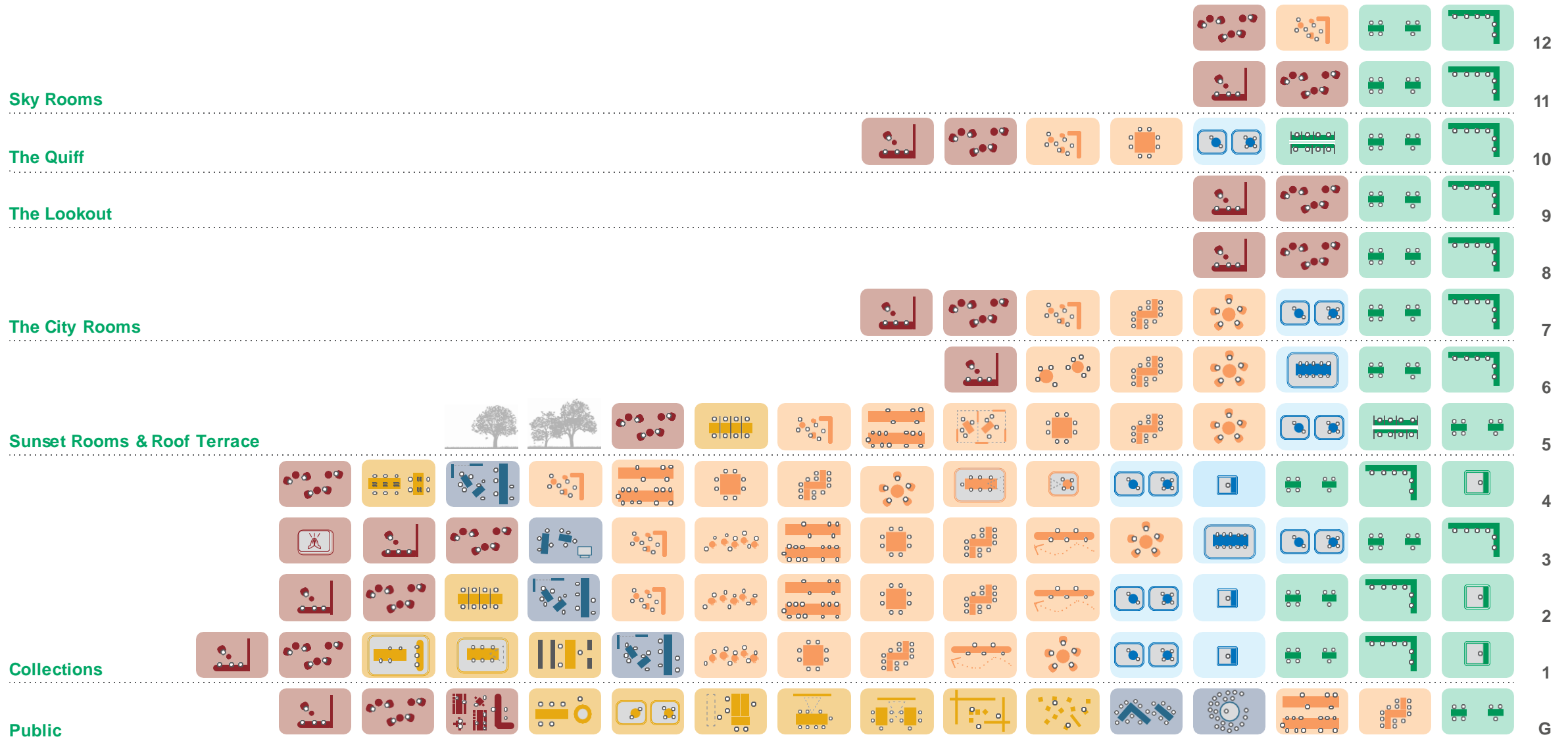




**Interiors**



Private  
Public



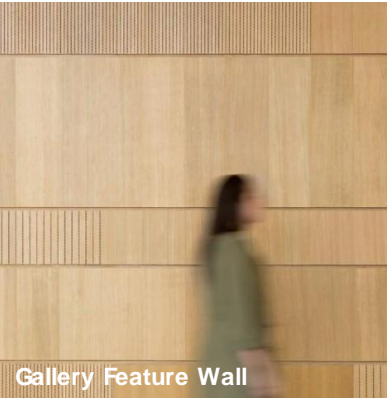
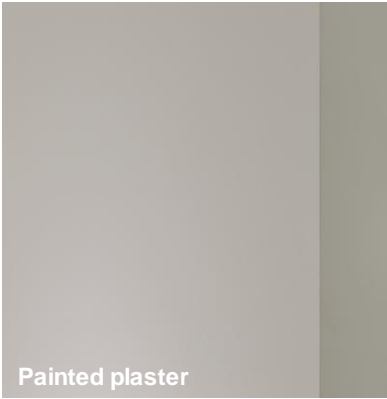
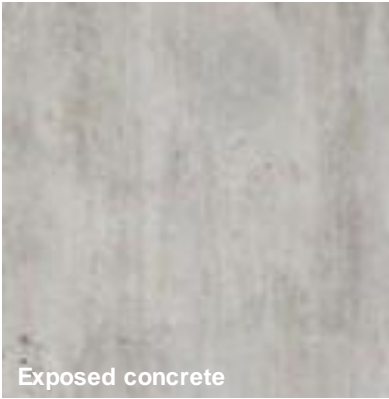


Ceilings

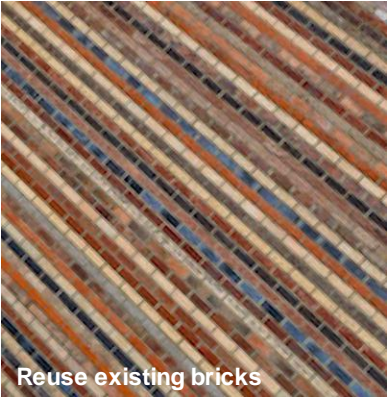


**General Strategy:**  
An intentionally neutral base palette uses timeless natural materials with an emphasis on achieving low embodied carbon where possible. This is complimented by more agile parts of the building, such as furniture to provide moments of colour offering more flexibility to the future evolution of the library over time.

Walls



Floors





Use of Colour within the Library

As part of the architecture competition for this project Hawkins\Brown have developed a palette of RAL colours to be used on the reveals of the circular windows. These colours were inspired by the immediate context of the urban setting; red sandstone, brick and metal cladding, local stonework and the park. A more muted palette has been developed out of this for internal application. The colours will be applied in different combinations principally in the loose furniture and fittings to develop different characters within each major zone of the library. The use of colour on the furniture especially tabletops and legs will help to de-institutionalise the interior and create a home from home for students.



Strategic Section — bringing the colour from the facade inside & tweaking to suit the nuance of spaces



Facade Colours:









# **Manchester Metropolitan University Library Transformation Liber LAG Seminar 2024**



**Hawkins\**  
**Brown**

**SCHMIDT**  
**HAMMER**  
**LASSEN**