

UNIVERSITY OF BRISTOL NEW UNIVERSITY LIBRARY

LIBER Architecture Group

April 2024

bristol.ac.uk

Hawkins\Brown

SCHMIDT
HAMMER
LASSEN





Strategic Vision

A library empowers knowledge generation.

We connect people with ideas and with each other—enabling our community to meet, read, think, research, share, create new ideas, and make new discoveries.

Our library lies at the heart of a University of Bristol education, research, and civic endeavour.

bristol.ac.uk/library

Strategic Vision

To create a world class University library that is representative of both the University and the City's proud tradition of academic excellence with an innovative, forward-thinking spirit.

- Increase in provision and quality of learning and research facilities
- Improved student experience
- Increase in study seats
- Better integration with University services and the wider University
- Improved public access to collections and exhibitions
- Improved access to high demand resources for learning and teaching
- A sustainable building

Design Principles



Supporting well-being | *a sense of relaxation and support*



Inclusive and accessible | *where diversity is valued*



Inspirational | *to delight and inspire innovation and creativity*

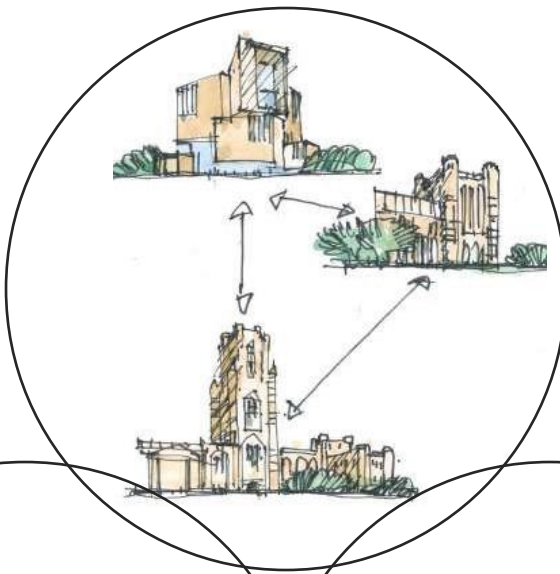


Adaptable | *seamless adaptation to new ways of working*



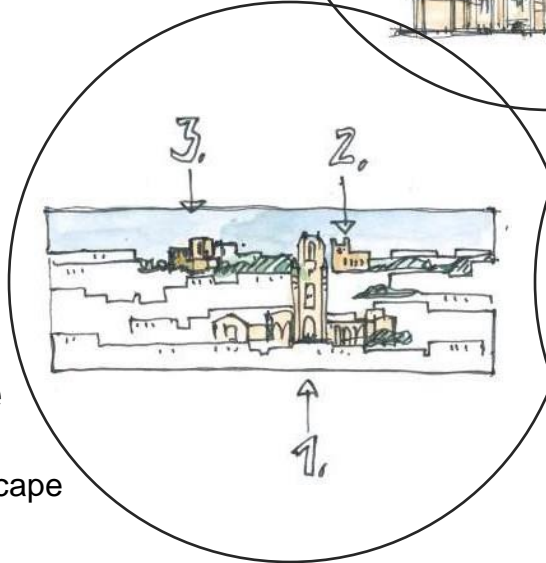
Built to last | *sustainable, contextual*

Design Principles



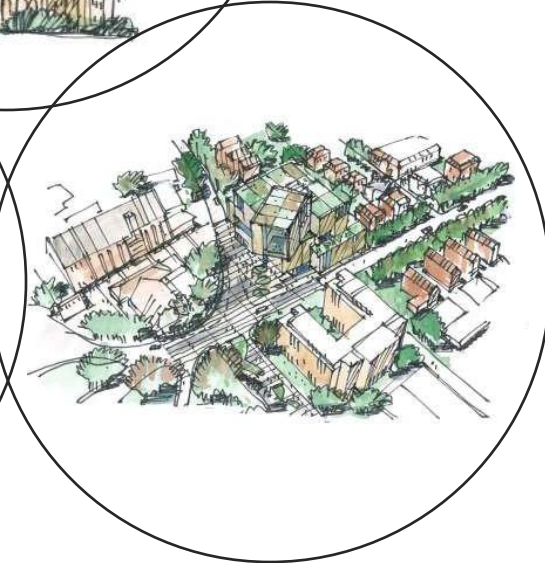
Landmark

Completes a trio of buildings



Context & Heritage

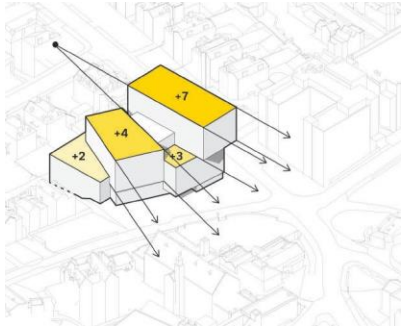
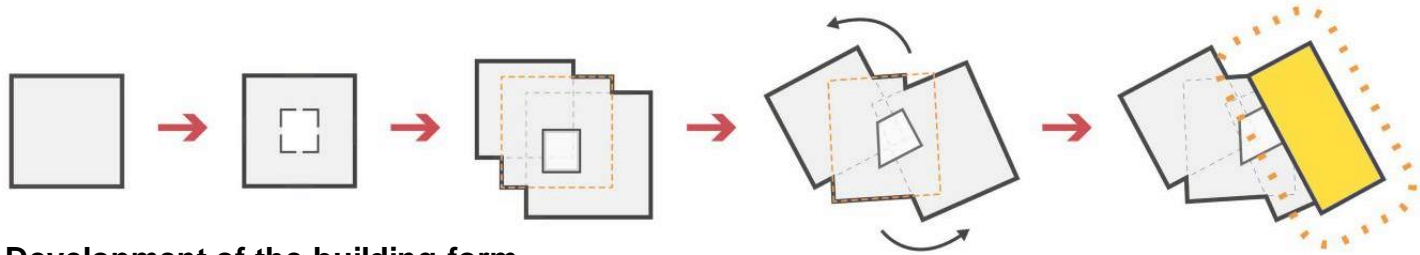
Addresses the wider cityscape
Integrates into the urban landscape



Civic

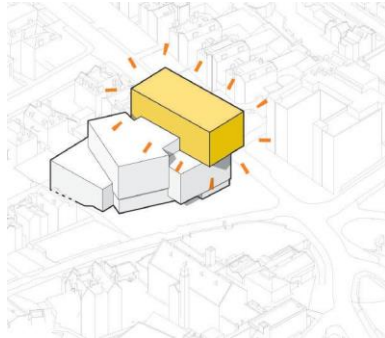
Becomes a gateway
to the University

Design Principles



Massing

Adjustment to scale
Address immediate context



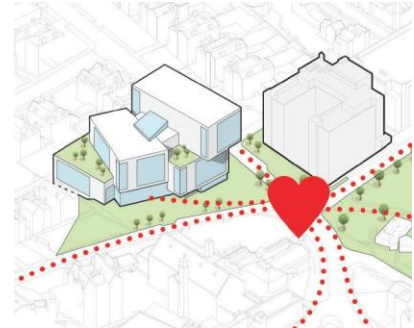
Beacon

Architectural and
conceptual landmark
Contemporary addition to
the wider cityscape



Greening

Health and wellbeing
Sustainable landscape



Campus Heart

Becomes the beating heart

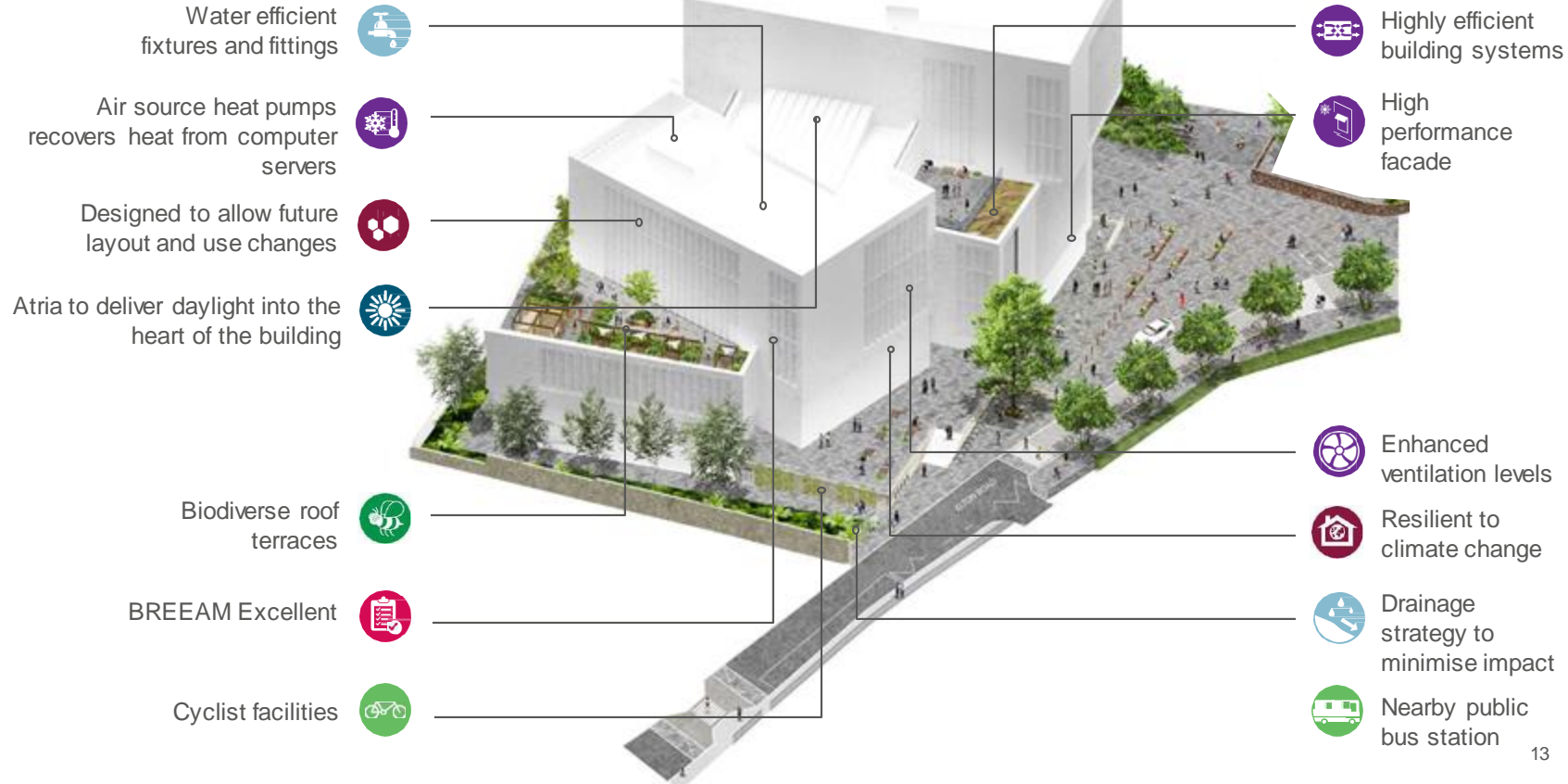


Building Information

GIFA	14,399 m ²
Study Seats	1,920
Books Open	280,000
Mobile Racking	100,000
Journals	60,000
Cultural Collections	Passive Archive
Staff	73 FTE
Environmental standard	BREAMM Excellent
Public ground floor	120 seat event space 2 exhibition galleries 40 seat café Creative lab & maker space Changing Places WC



Building Information



Public Realm

New
Library

Senate
House

Sports
Centre

Wills Physics
Laboratory



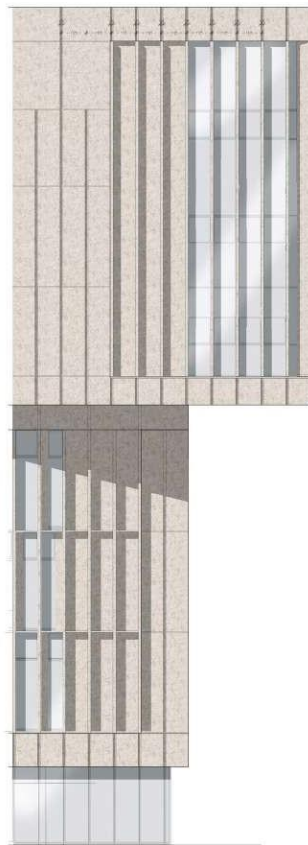
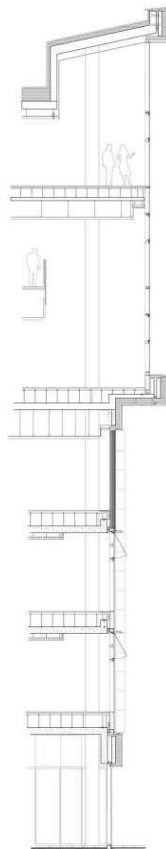
Public Realm



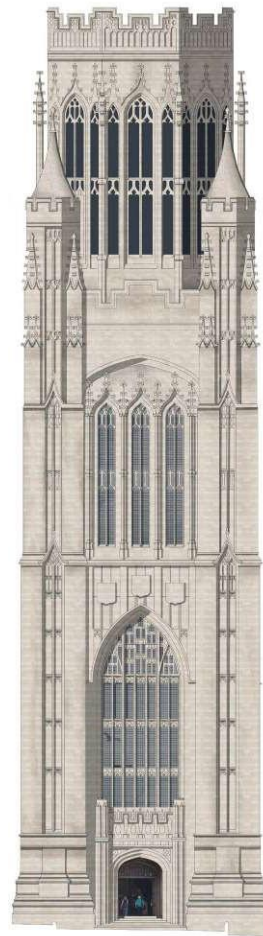
Appearance



- Sandstone
- Brandon Stone (with sandstone dressings)
- Brick
- Red Tile
- Concrete
- Stone [Other]
- Render (various colours)
- Glass
- Metal Cladding



New University Library



Wills Memorial Tower

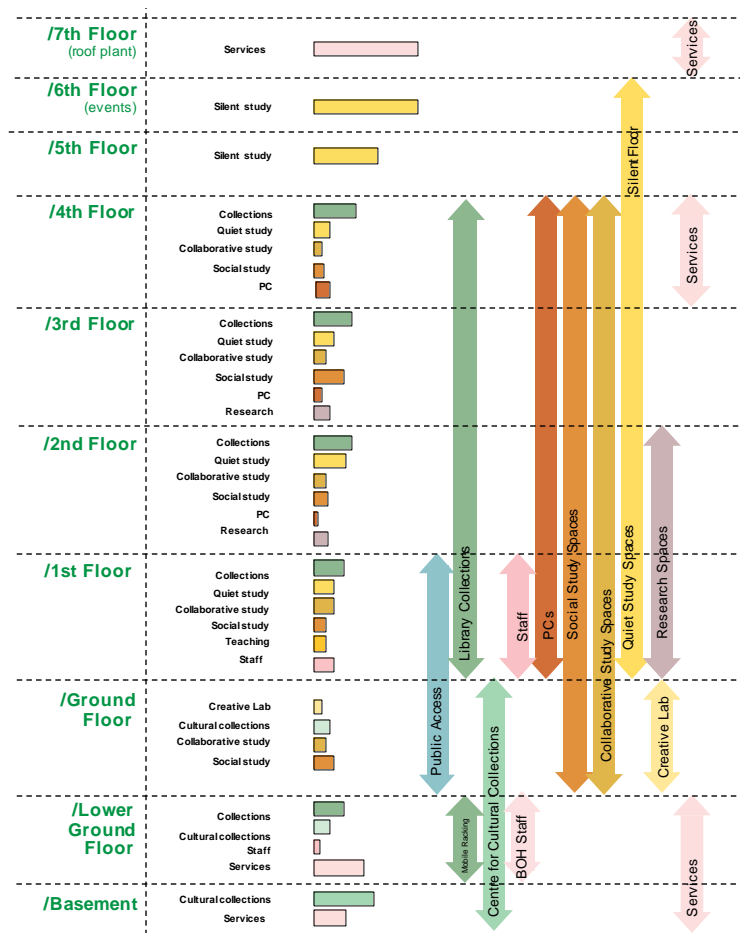
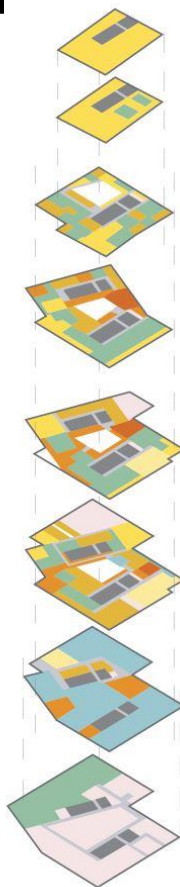
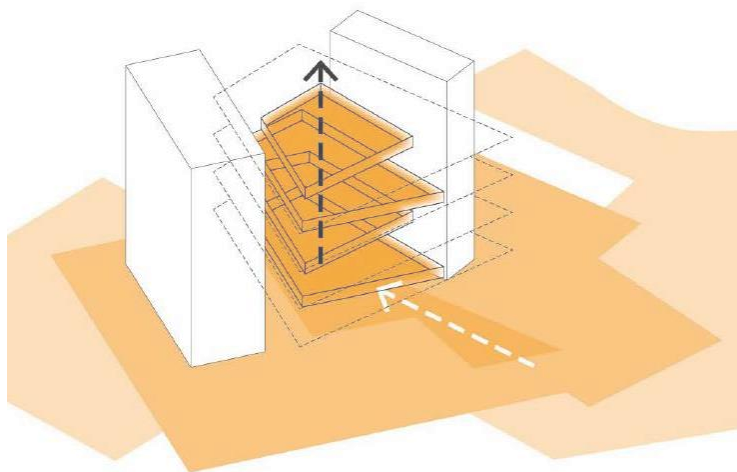




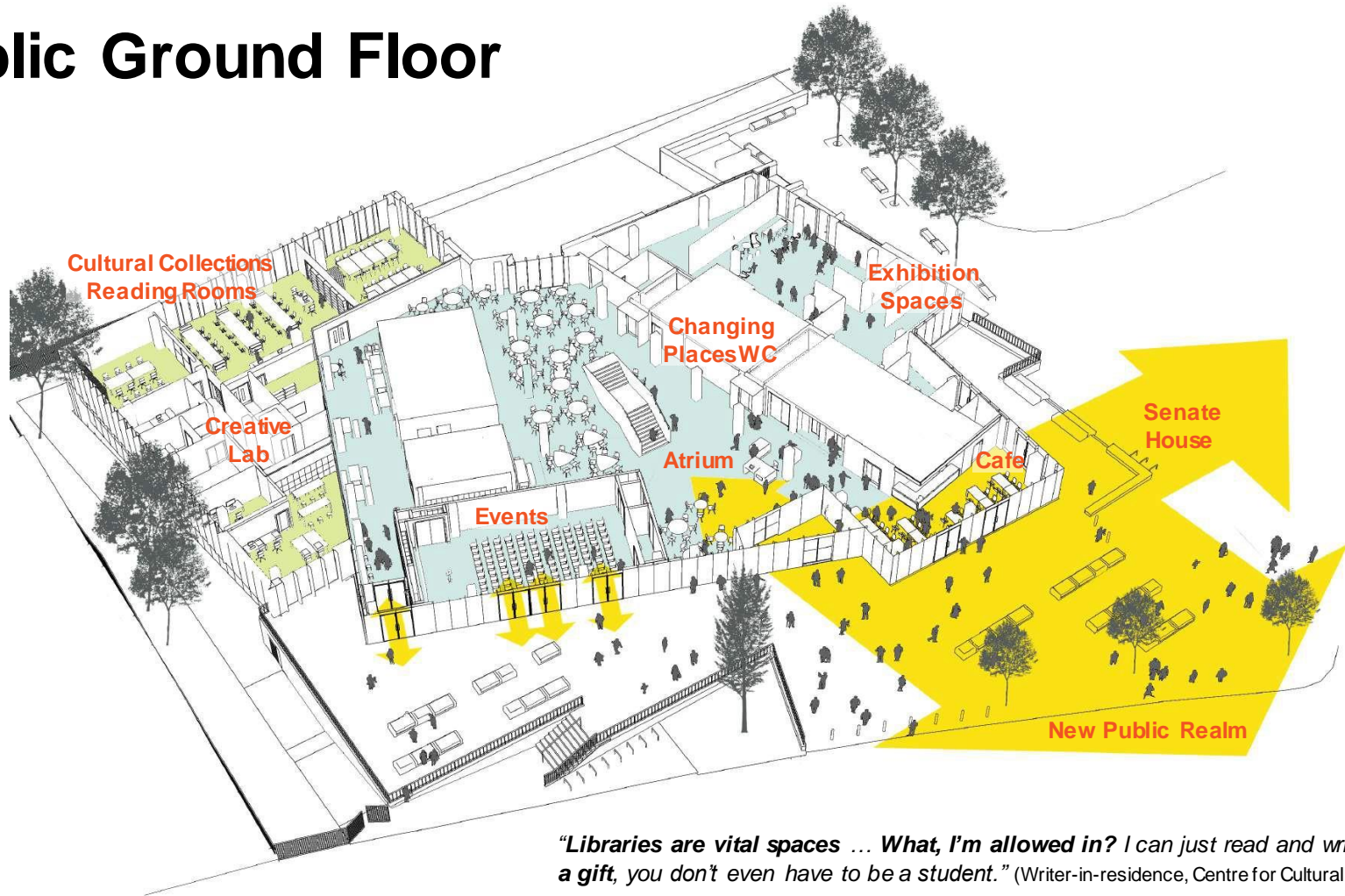
Building Organisation



Building Organisation



Public Ground Floor



"Libraries are vital spaces ... What, I'm allowed in? I can just read and write? It's such a gift, you don't even have to be a student." (Writer-in-residence, Centre for Cultural Collections)





EXHIBITION

WELCOME



LC
Arts & Soc







Post-Pandemic Design Review

We stress-tested the design and found it to anticipate accelerated trends. We made minor adaptations to the distribution of study and research spaces, digital scholarship facilities, and creative maker spaces.

Education and Student Experience

- Diversity of blended learning styles
- Digital-forward services and learning content
- Cross-university approaches to digital inclusion

Research and Innovation

- Open research and virtual reading rooms

Global Civic University

- Social inequality, isolation, and digital divide



*"The digital divide is growing ... these facilities would change this narrative, enabling all students, **especially the marginalised and disadvantaged**, to access the equipment critical to academic success." (Bristol Scholar, statement to planning committee)*





Hawkins\Brown

SCHMIDT
HAMMER
LASSEN



University of
BRISTOL