

Féidearthachtaí as Cuimse
Infinite Possibilities

A Portrait of the Library as an Office Block and an Asylum:

How Technological University Dublin converted, adapted and reused its buildings to create functional, efficient and modern libraries



TU Dublin At A Glance



3
campuses



8k
graduates per year



29k+
students



7k
part time students



1:16
staff : student ratio



3k+
international students
from over 100 countries



1,000+
students working
with community
organisations



STEM
17%
of the national provision



Business
14%
of the national provision



Services
20%
of the national provision



Craft Apprenticeships
20%
of the national provision



26%
of undergraduate new
entrants via **access routes**



Further Education
20%
of national applications



**Award Winning
Staff**



**Athena SWAN
Bronze Award**



+38%
research award value
(over the past 3 years)



11,000+
citations
(in the past 3 years)



+12M
open access research
downloads arrow@TUDublin



1,000+
academic
collaborations



800+
collaborations
with industry



**Award Winning
Technology
Transfer Activities**



7,000m²
of incubation
space

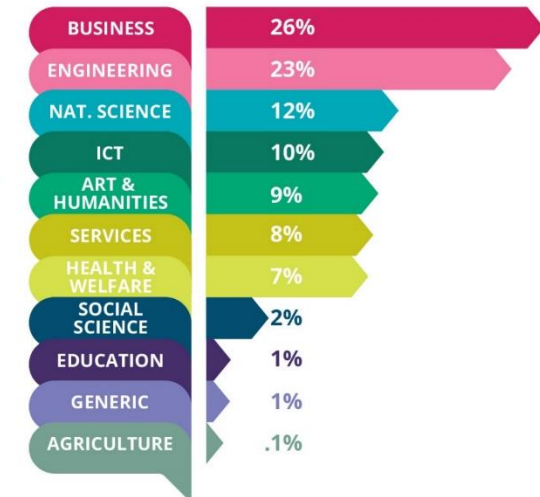


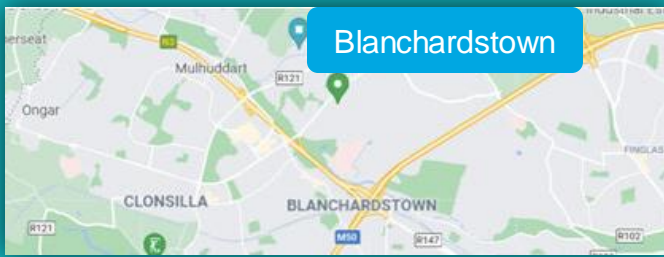
100+
start-ups p.a.
(facilitated on
campus)



200
entrepreneurs p.a.
(on TU Dublin
enterprise programmes)

Field of Study

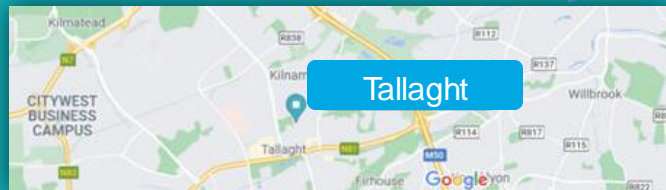
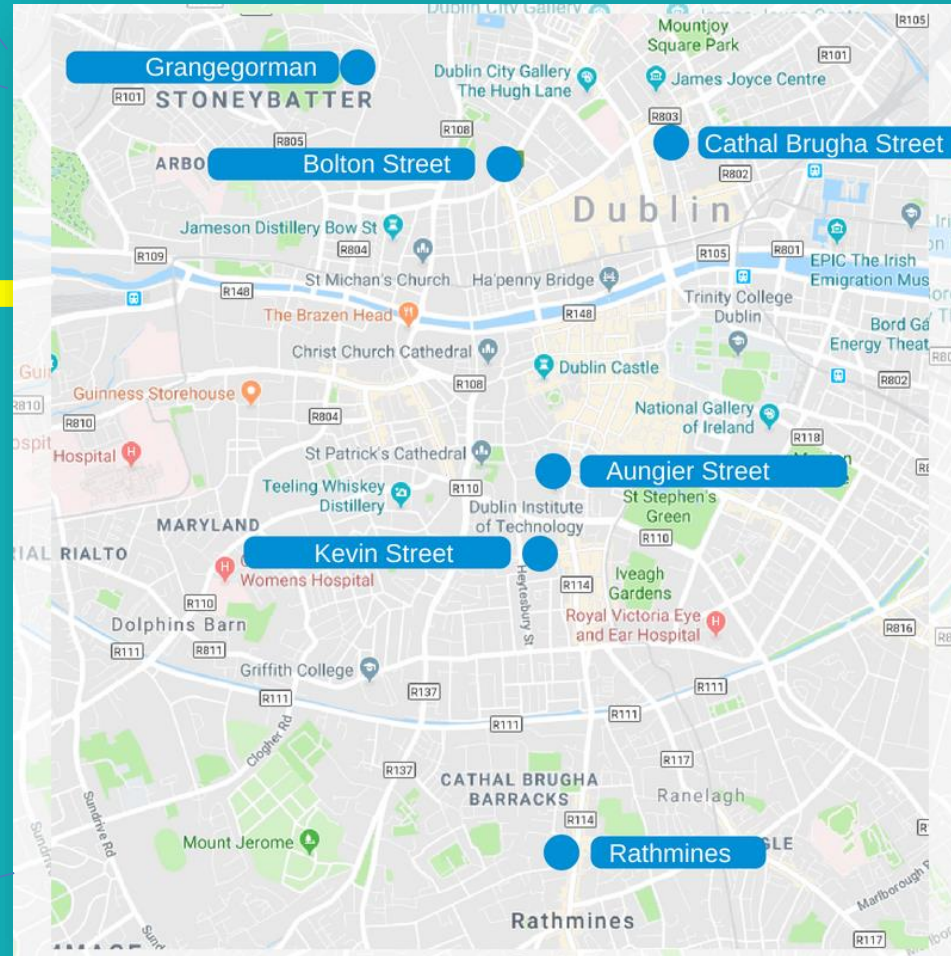




TU Dublin Locations in 2020

North Side

South Side

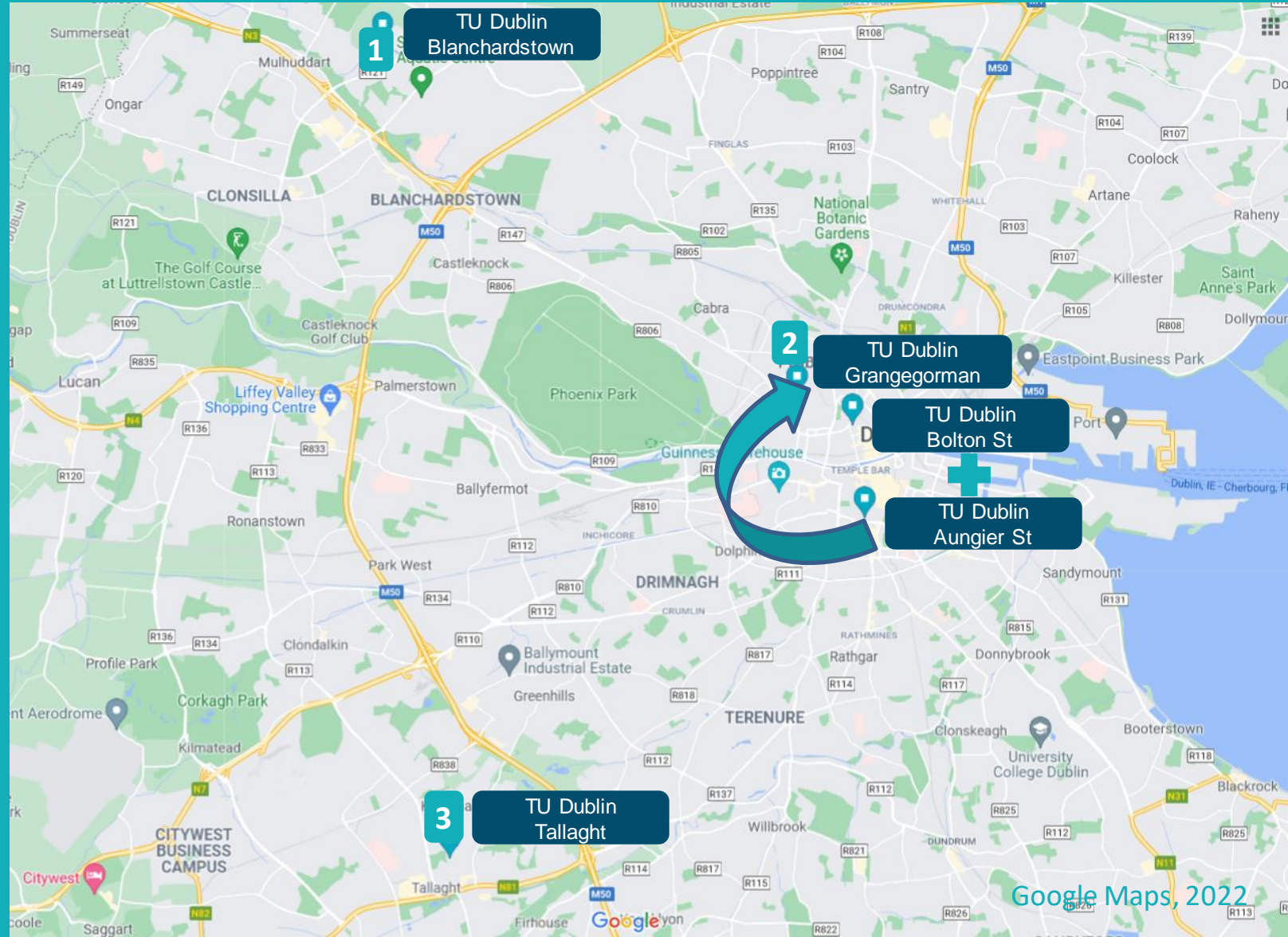


TU Dublin Campuses now

Five Locations

&

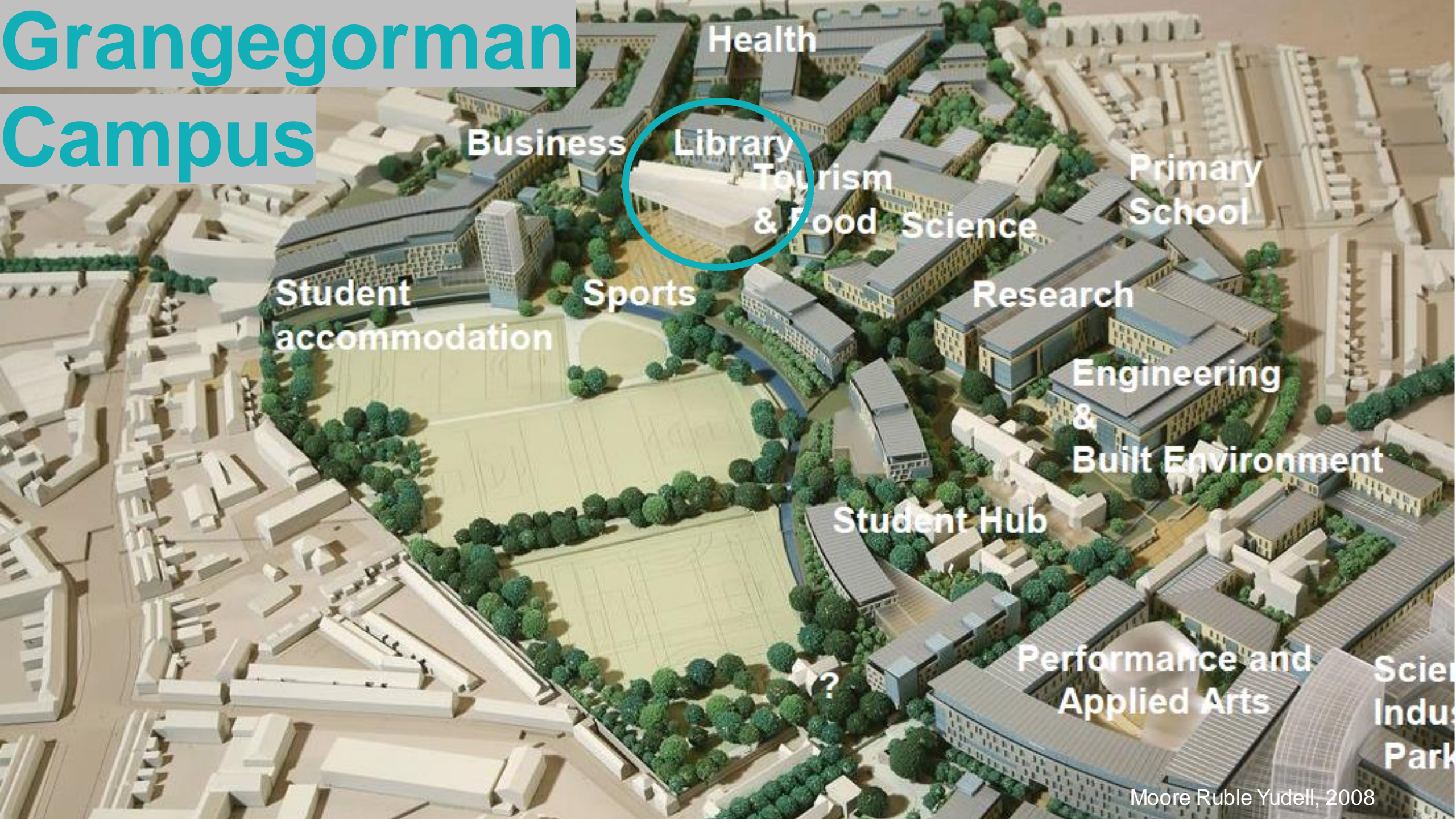
Five Libraries



Grangegorman History



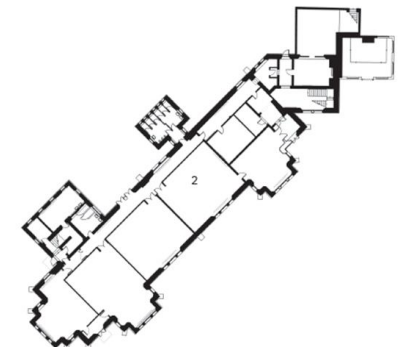
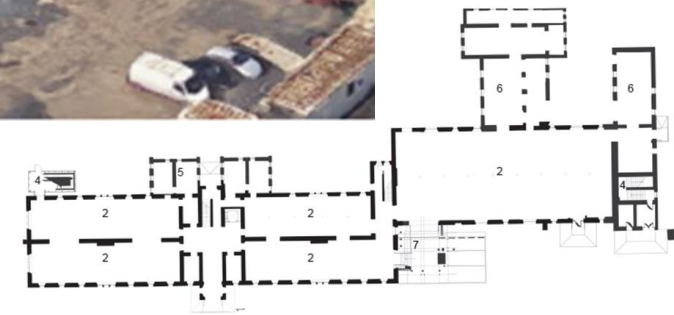
Grangeegorman Campus



North House



Constructed 1854
Architect: Murray & Denny
Original Use: Male Ward of
Richmond Lunatic Asylum



Ground Floor Plan- Original Functions

Original Functions
1. Male Wards
2. Recreation Space
3. Residential Building
New Additions
4. Fire Escape
5. Toilet Block
6. Workshop
7. Entrance

Academic Hub



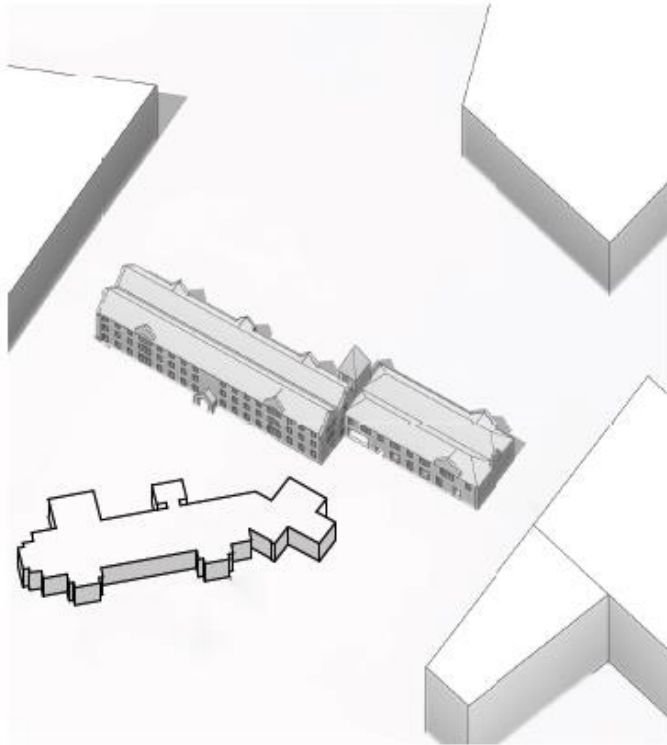
Picture Plane, 2017

O'Donnell + Tuomey
—led design team

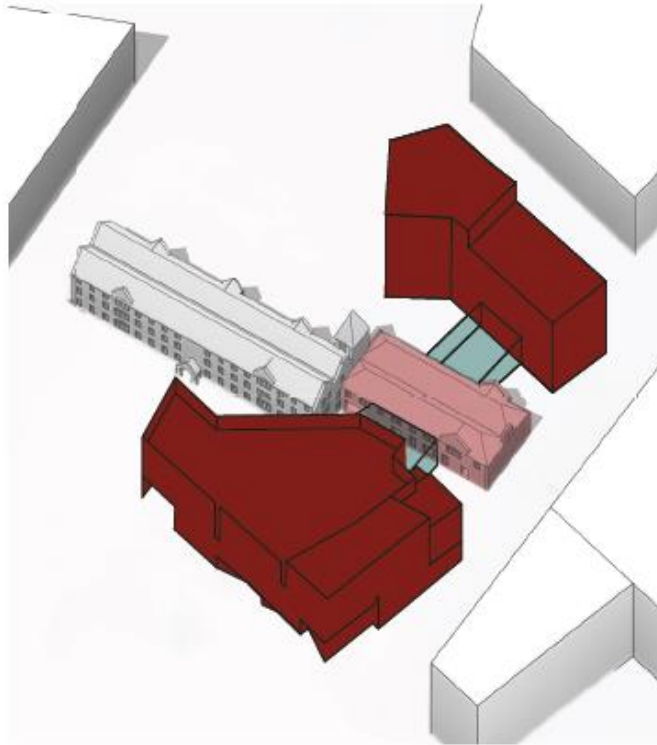
Heart of campus

Incorporates
protected structure

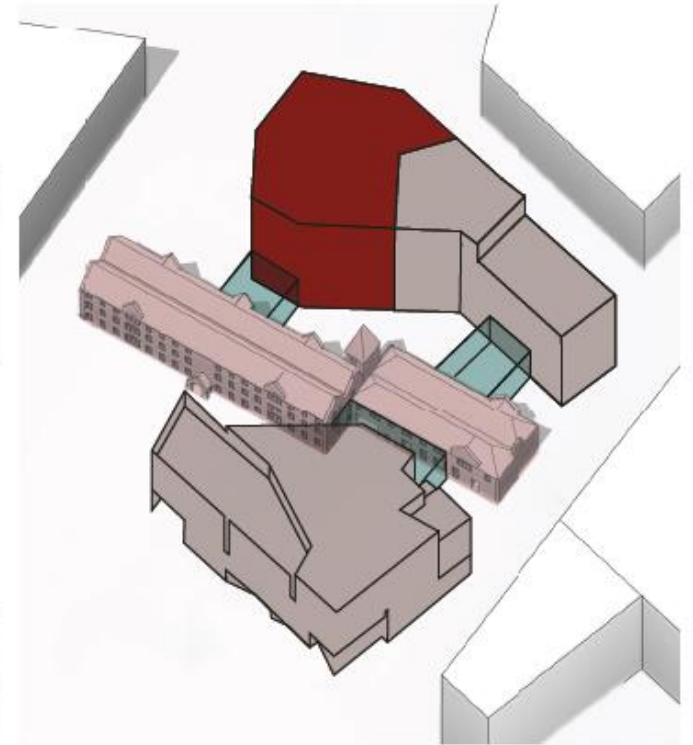
Integrating the North House



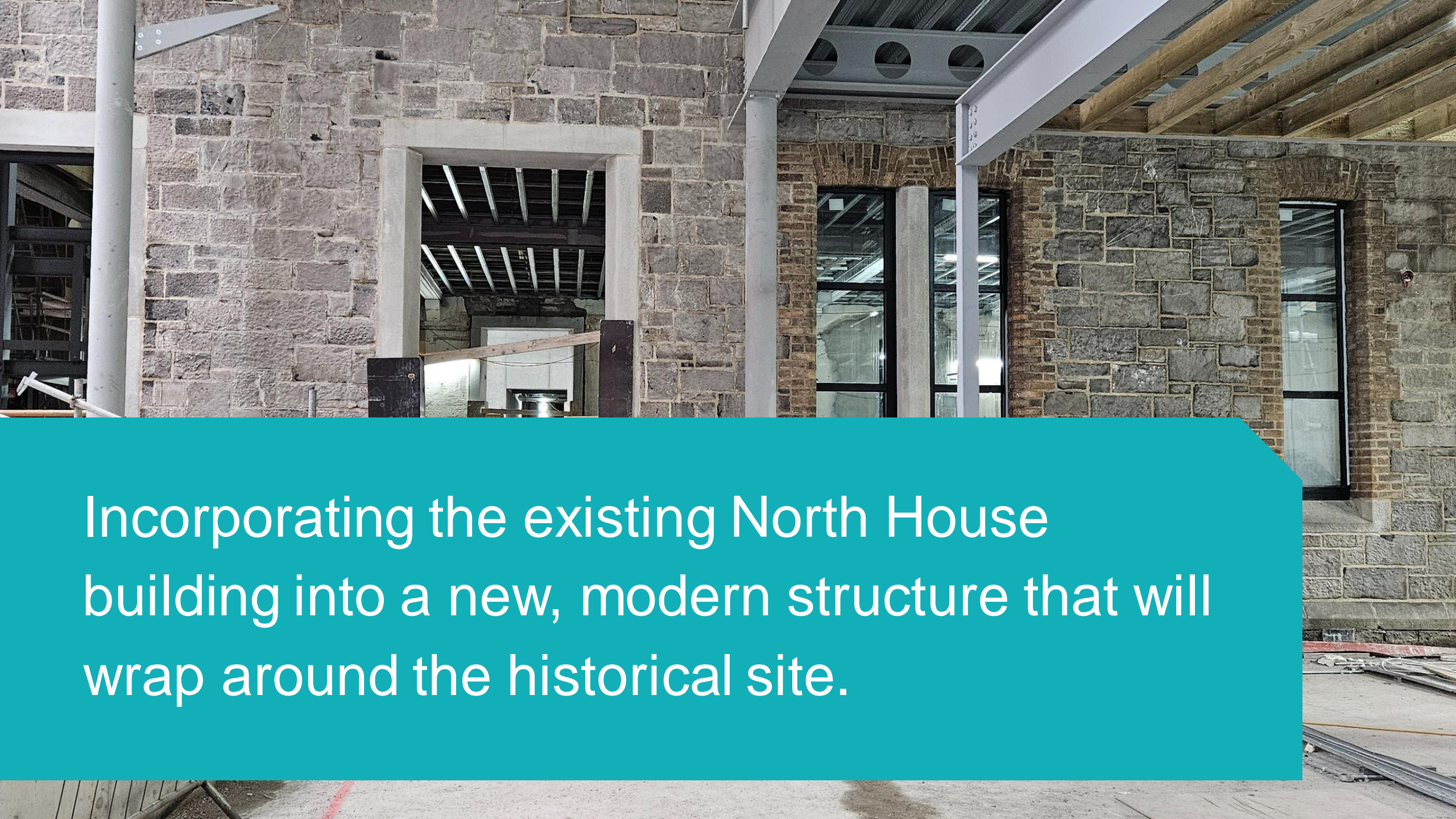
Existing Buildings and Demolition of Annexe 9



Phase 1



Phase 2



Incorporating the existing North House building into a new, modern structure that will wrap around the historical site.

North House: Internal View

Enlarged Upping to create
North South Route through
the Market Place

New Openings to East Facade
bring light and air into the
ground floor



View of Learning Commons- Ground Floor North House East



First Floor Library Reception - North House East

Accommodation



Picture Plane, 2017

Phase One 12,565 m²

Seminar rooms

Flexible classroom

Café on ground floor

Roof-top terrace

Special Collections:
climate controlled
storage & reading room

Building Occupants



Consolidation of
multiple libraries

Academic Support
Services

Learning Teaching &
Assessment

People Development

A Space for the Community



Ground floor:

- Café
- Exhibition Space

Fourth floor:

- Event Space
- Roof-top terrace

Academic Hub – Under Construction



2020/21 Migrations to Grangeegorman

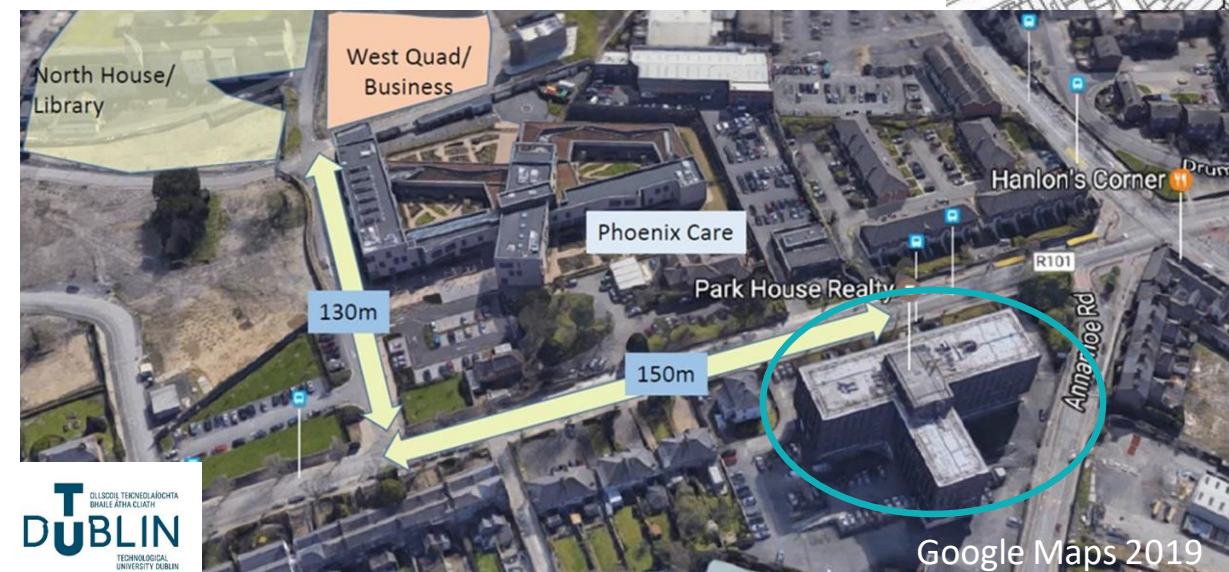
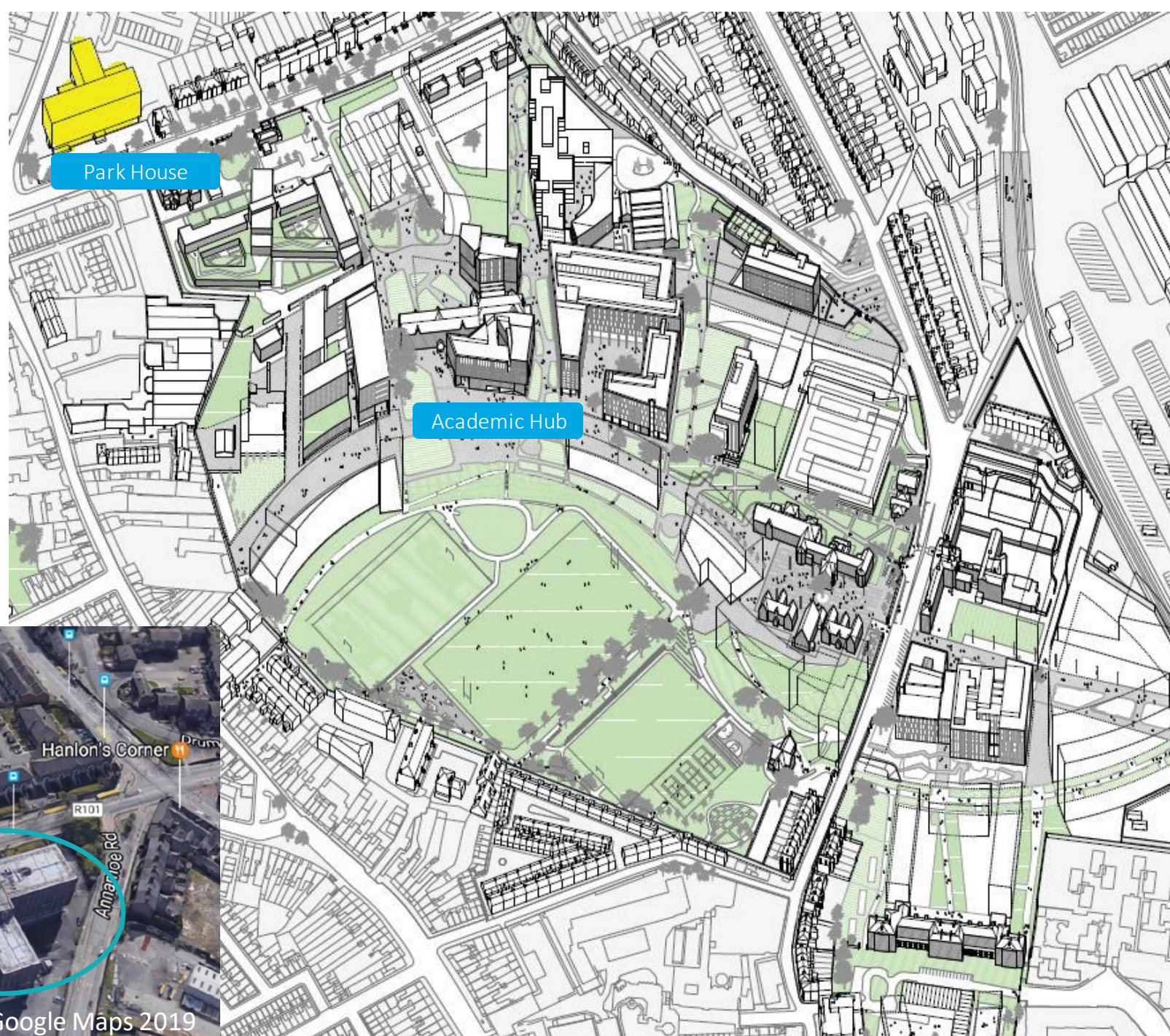



Interim Library- Park House

- **1972:** Built as a hotel!
- **1970's- 2017:** Operated as an office block
- **2020- present:** 3.5 floors of library space



Interim Library Location



A spiral-bound notebook with a silver metal spiral binding on the left side. The notebook is open to a white, lined page. The words "To Do List" are written in black ink in a cursive, handwritten style. The notebook is resting on a light-colored wooden surface. A yellow pencil with a black eraser is partially visible to the right of the notebook.

To Do List

Migrate and merge 4 libraries and a Central Services Unit

Establish a new library

Consolidate 5 library teams

Provide a continuity of service

While merging three institutions and library services to form Ireland's first technological university

Month

Year

Mon

Tue

Wed

Thu

Fri

Sat

Sun

The date is never the date
Be prepared to be flexible

Floor Loading

Steel supports to
reinforce



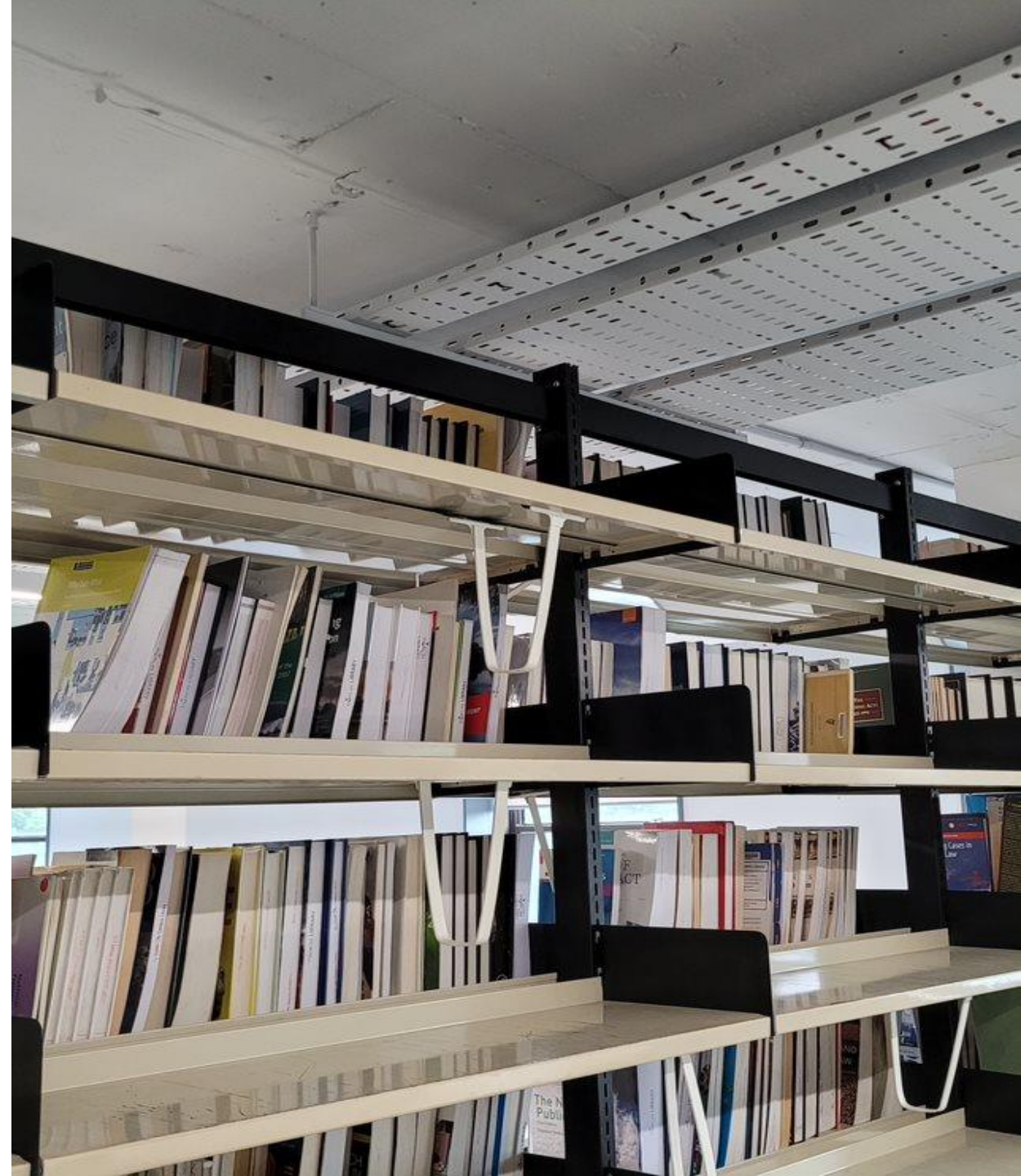
Floor Loading

Steel supports covered
by panelling



Ceiling Height

Reused shelving
cut to fit



Library Security

Security panels on each floor



Fire Safety

Additional fire stairs



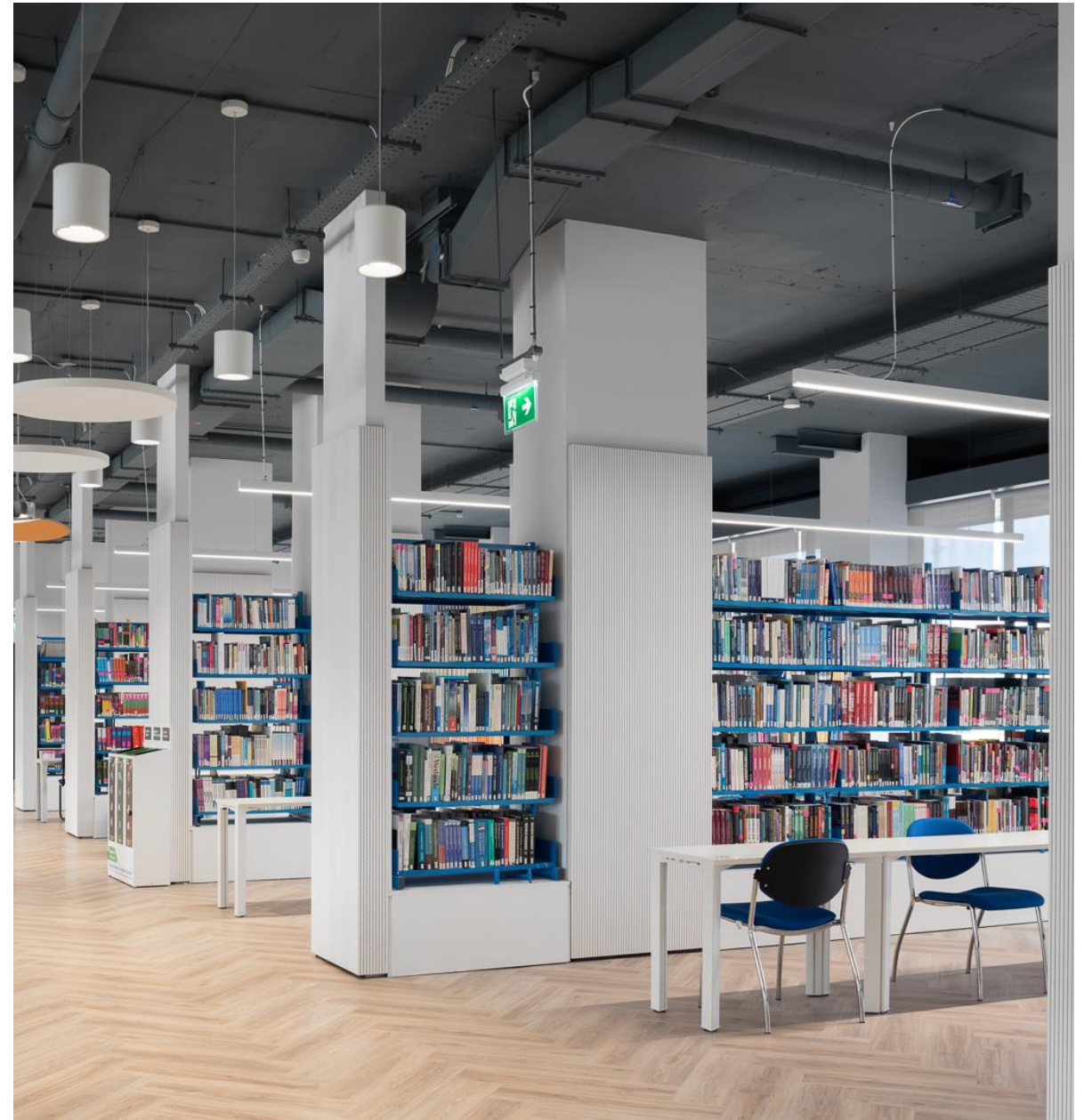
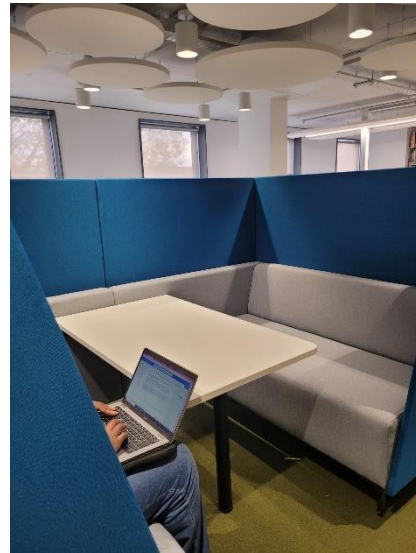
4,603 linear metres of print
collections moved (150,000
items)

2,690 linear metres of
shelving reused



Park House Today





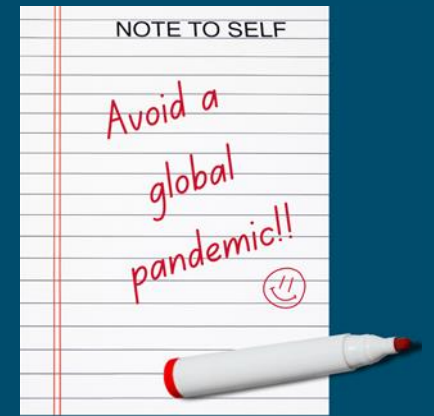
The interim testbed

- Move from small libraries to one large library & from single storey libraries to multi-floor library
- Move from small teams to one large team of 34 people
- Centralisation of functions
- New services



What we Learned...

- It's never too early to start planning!
- Ensure library membership of the project team
- Ensure library involvement in tender specifications
- Develop good working relationships with everyone
- Adapt and re-use: spaces and plans



Making Progress



Sod-Turning Ceremony March 2022



Topping Out ceremony January 2024



Academic Hub

Tom Coakley, 2024

Féidearthachtaí as Cuimse
Infinite Possibilities

Go raibh maith agaibh Thank You

Allison Kavanagh
Head of Library Services
allison.kavanagh@tudublin.ie

Catherine Cooke
Academic Hub Project Manager
catherine.cooke@tudublin.ie

