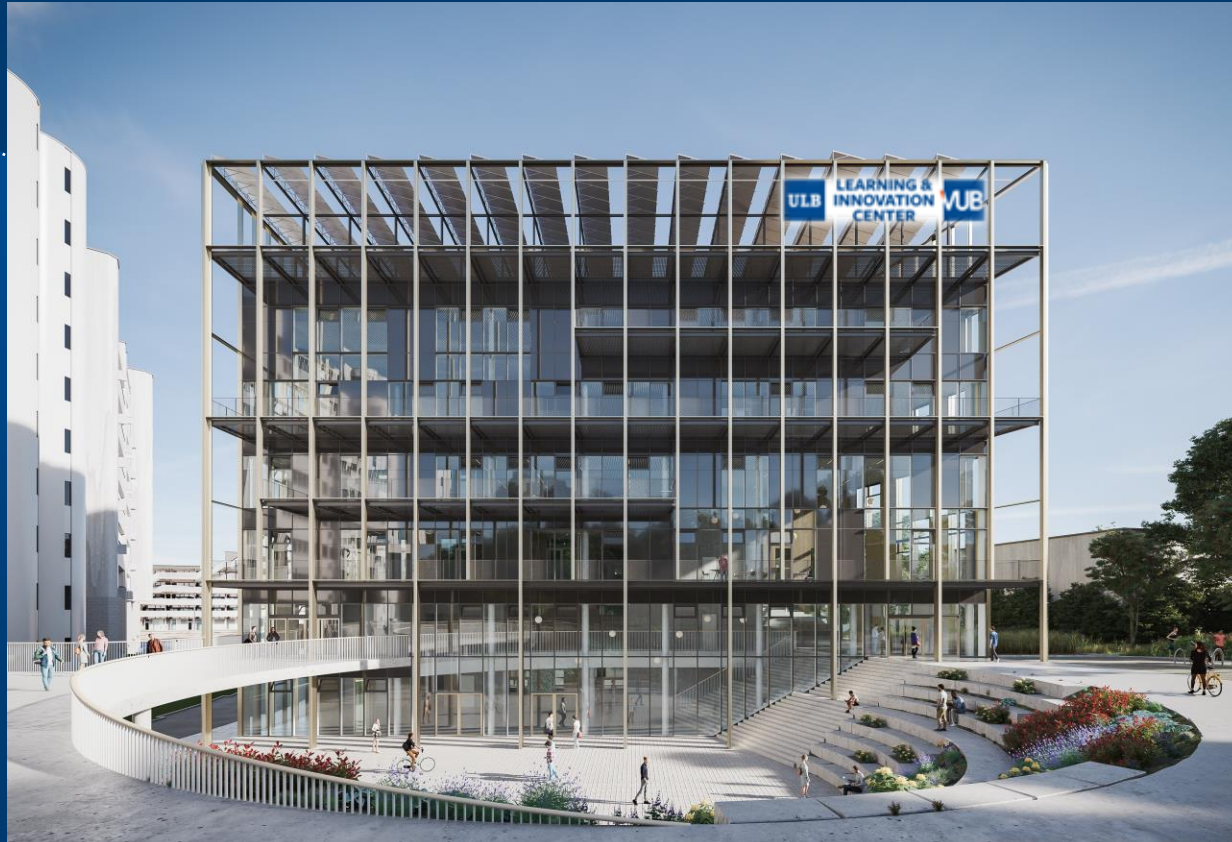


UNIVERSITÉ  
LIBRE  
DE BRUXELLES



VRIJE  
UNIVERSITEIT  
BRUSSEL



UNIVERSITÉ  
LIBRE  
DE BRUXELLES



VRIJE  
UNIVERSITEIT  
BRUSSEL

# The Learning & Innovation Center (LIC)

# Background

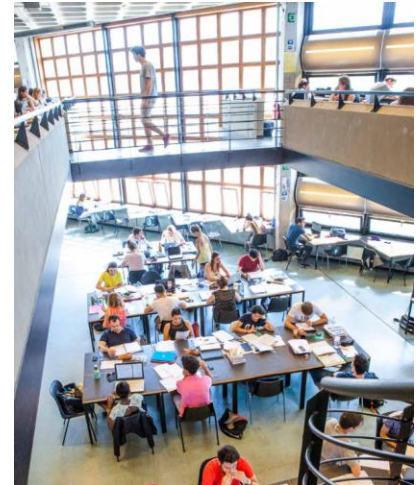
---

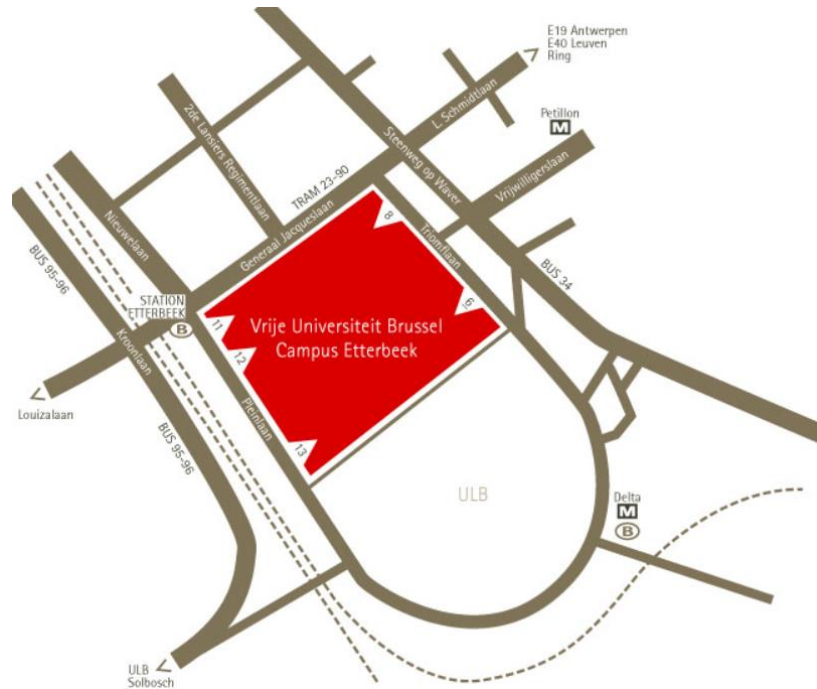
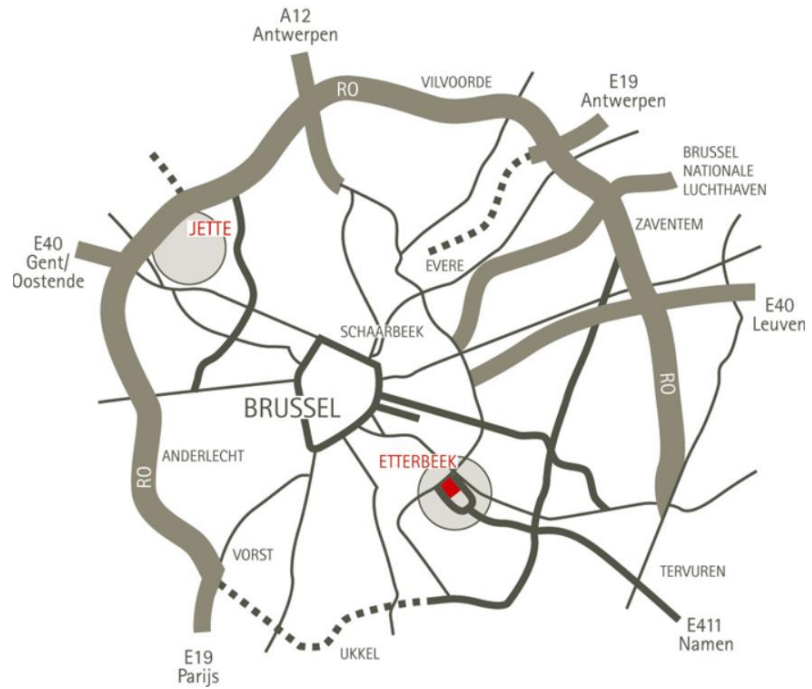
- ULB and VUB are sister universities
- The ULB was founded in 1834 (French speaking)
- After the creation of the language border in Belgium in 1963 all ULB faculties offered courses in Dutch
- The VUB became independent in 1970 with full programs in Dutch. The VUB library started from scratch after the split.
- However, both universities continue to share the same values and work together to develop synergies and joint projects.

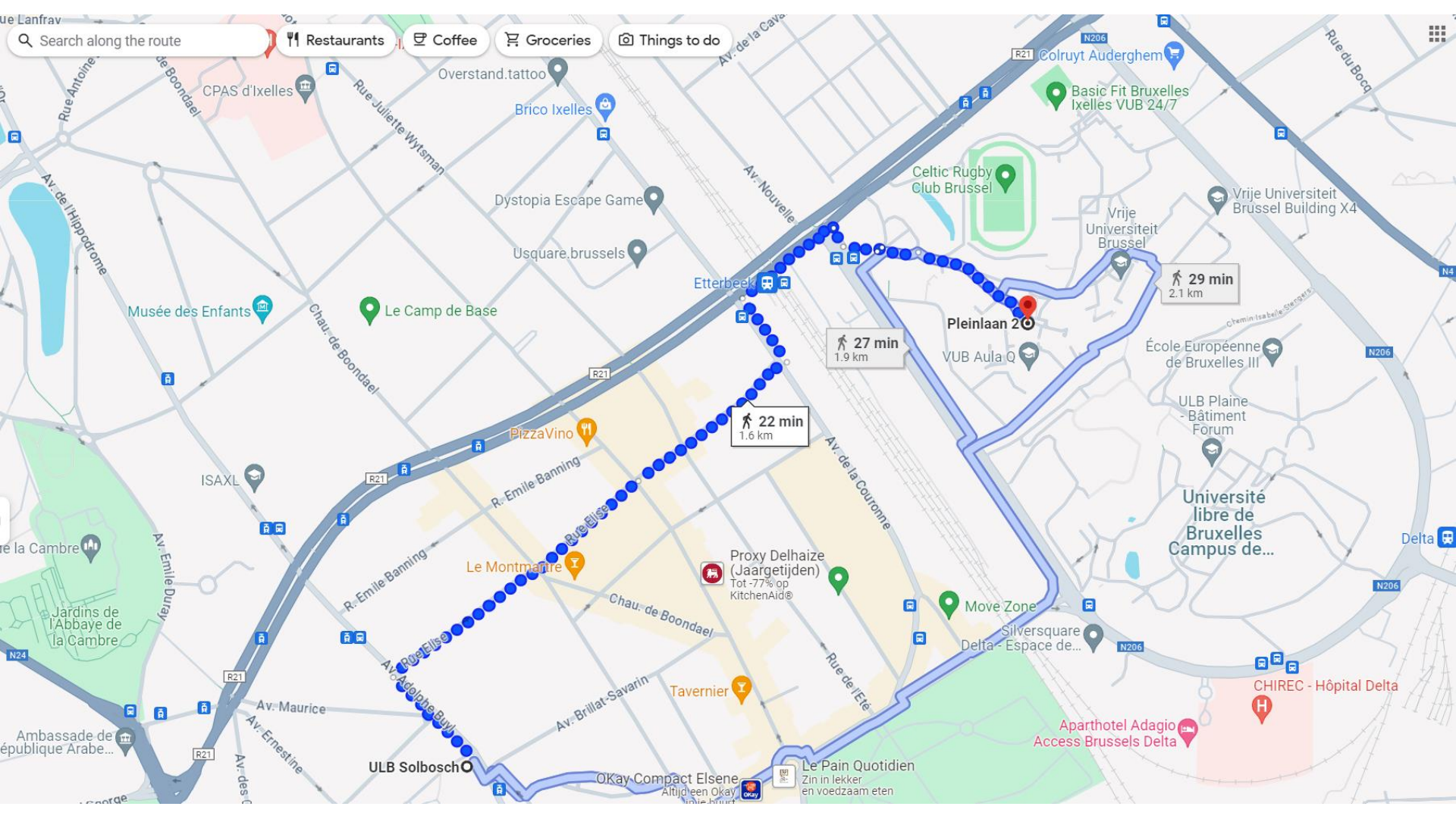
# Current libraries

---

- The ULB library consists currently of more than 7 libraries located for the most part on campus Solbosch: Humanities, Science and Technology, Law, Architecture, Medical...
- The VUB library consists of two libraries:
  - the Central Library (Main Campus in Etterbeek)
  - the Medical Library (Health Campus in Jette)







Search along the route

Restaurants

Coffee

Groceries

Things to do

Rue Antoine  
Rue de Boondaal

CPAS d'Ixelles

Overstand.tattoo

Brico Ixelles

Dystopia Escape Game

Usquare.brussels

Musée des Enfants

Le Camp de Base

Chau. de Boondaal

ISAXL

R. Emile Banning

PizzaVino

Le Montmartre

Jardins de l'Abbaye de la Cambre

Ambassade de République Arabe...

ULB Solbosch

OKay Compact Elsene

Le Pain Quotidien

Zin in Lekker en voedzaam eten

Rue Juliette Wylsman

Av. de la Couronne

Etterbeek

Av. de la Couronne

Av. de la Couronne

Av. de la Couronne

Av. de la Couronne

Av. de la Couronne

Av. de la Couronne

Av. de la Couronne

Av. de la Couronne

Av. de la Couronne

Av. de la Couronne

Av. de la Couronne

Av. de la Couronne

Av. de la Couronne

Av. de la Couronne

Av. de la Couronne

Av. de la Couronne

Av. de la Couronne

Av. de la Couronne

Av. de la Couronne

Av. de la Couronne

Av. de la Couronne

Av. de la Couronne

Av. de la Couronne

Av. de la Couronne

Av. de la Couronne

Av. de la Couronne

Av. de la Couronne

Av. de la Couronne

Av. de la Couronne

Av. de la Couronne

Av. de la Couronne

Av. de la Couronne

Av. de la Couronne

Av. de la Couronne

Av. de la Couronne

Av. de la Couronne

Av. de la Couronne

Av. de la Couronne

Av. de la Couronne

Av. de la Couronne

Av. de la Couronne

Av. de la Couronne

Av. de la Couronne

Av. de la Couronne

Av. de la Couronne

Av. de la Couronne

Av. de la Couronne

Av. de la Couronne

Av. de la Couronne

Av. de la Couronne

Av. de la Couronne

Av. de la Couronne

Av. de la Couronne

Av. de la Couronne

Av. de la Couronne

Av. de la Couronne

Av. de la Couronne

Av. de la Couronne

Av. de la Couronne

Av. de la Couronne

Av. de la Couronne

Av. de la Couronne

Av. de la Couronne

Av. de la Couronne

Av. de la Couronne

Av. de la Couronne

Av. de la Couronne

Av. de la Couronne

Av. de la Couronne

Av. de la Couronne

Av. de la Couronne

Av. de la Couronne

Av. de la Couronne

Av. de la Couronne

Av. de la Couronne

Av. de la Couronne

Av. de la Couronne

Av. de la Couronne

Av. de la Couronne

Av. de la Couronne

Av. de la Couronne

Av. de la Couronne

Av. de la Couronne

Av. de la Couronne

Av. de la Couronne

Av. de la Couronne

Av. de la Couronne

Av. de la Couronne

Av. de la Couronne

Av. de la Couronne

Av. de la Couronne

Av. de la Couronne

Av. de la Couronne

Av. de la Couronne

Av. de la Couronne

Av. de la Couronne

Av. de la Couronne

Av. de la Couronne

Av. de la Couronne

Av. de la Couronne

Av. de la Couronne

Av. de la Couronne

Av. de la Couronne

Av. de la Couronne

Av. de la Couronne

Av. de la Couronne

Av. de la Couronne

Av. de la Couronne

Av. de la Couronne

Av. de la Couronne

Av. de la Couronne

Av. de la Couronne

Av. de la Couronne

Av. de la Couronne

Av. de la Couronne

Av. de la Couronne

Av. de la Couronne

Av. de la Couronne

Av. de la Couronne

Av. de la Couronne

Av. de la Couronne

Av. de la Couronne

Av. de la Couronne

Av. de la Couronne

Av. de la Couronne

Av. de la Couronne

Av. de la Couronne

Av. de la Couronne

Av. de la Couronne

Av. de la Couronne

Av. de la Couronne

Av. de la Couronne

Av. de la Couronne

Av. de la Couronne

Av. de la Couronne

Av. de la Couronne

Av. de la Couronne

Av. de la Couronne

Av. de la Couronne

Av. de la Couronne

Av. de la Couronne

Av. de la Couronne

Av. de la Couronne

Av. de la Couronne

Av. de la Couronne

Av. de la Couronne

Av. de la Couronne

Av. de la Couronne

Av. de la Couronne

Av. de la Couronne

Av. de la Couronne

Av. de la Couronne

Av. de la Couronne

Av. de la Couronne

Av. de la Couronne

Av. de la Couronne

Av. de la Couronne

Av. de la Couronne

Av. de la Couronne

Av. de la Couronne

Av. de la Couronne

Av. de la Couronne

Av. de la Couronne

Av. de la Couronne

Av. de la Couronne

Av. de la Couronne

Av. de la Couronne

Av. de la Couronne

27 min  
1.9 km

22 min  
1.6 km

29 min  
2.1 km

Pleinlaan 2

VUB Aula Q

École Européenne de Bruxelles III

ULB Plaine - Bâtiment Forum

Université libre de Bruxelles Campus de...

Proxy Delhaize (Jaargetijden)  
Tot -77% op KitchenAid®

Move Zone

Silversquare Delta - Espace de...

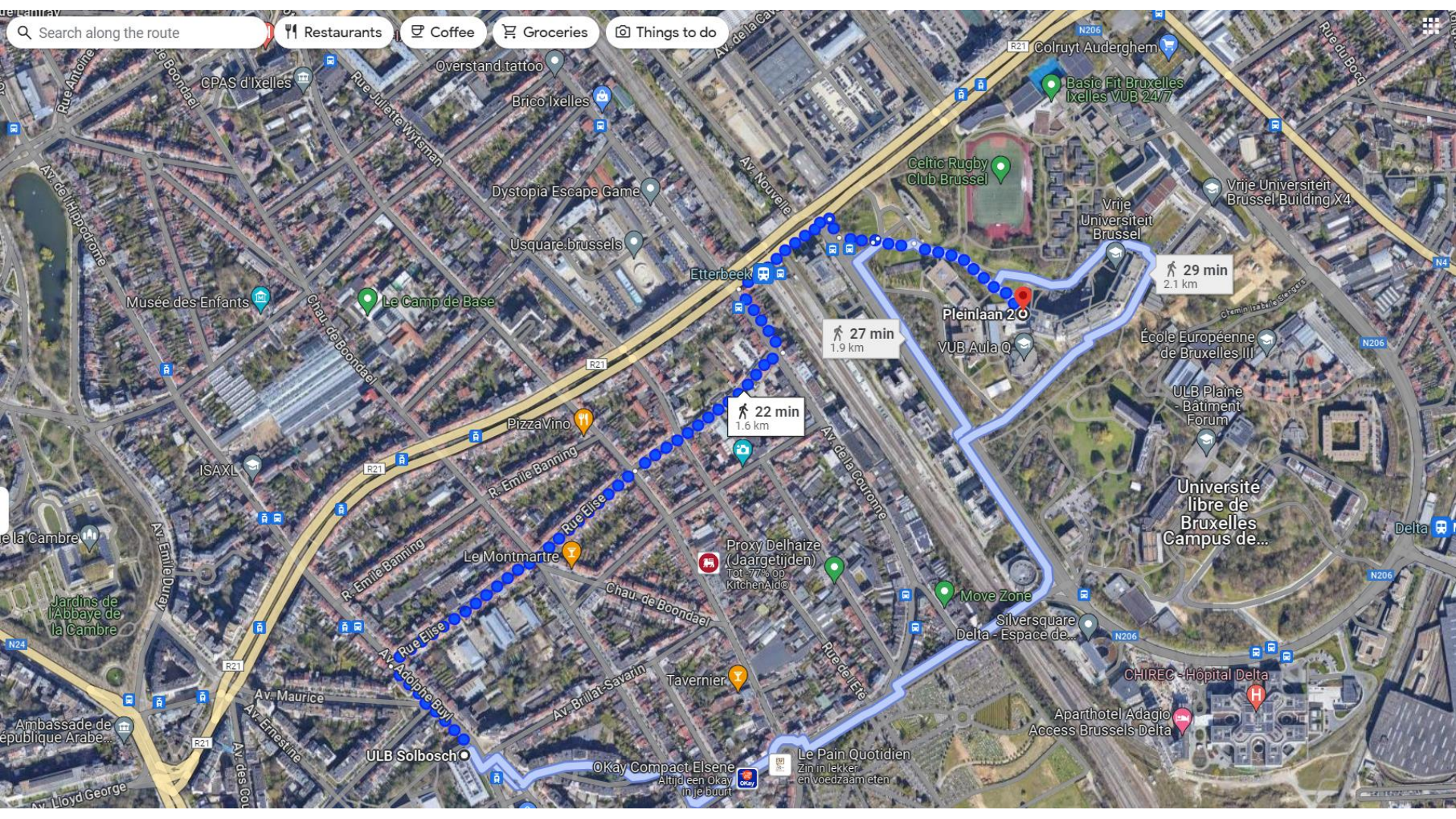
Tavernier

CHIREC - Hôpital Delta

Aparthotel Adagio Access Brussels Delta

OKay Compact Elsene

Le Pain Quotidien  
Zin in Lekker en voedzaam eten



Search along the route

Restaurants

Coffee

Groceries

Things to do

22 min  
1.6 km

27 min  
1.9 km

29 min  
2.1 km

Search along the route

Restaurants

Coffee

Groceries

Things to do

22 min  
1.6 km

27 min  
1.9 km

29 min  
2.1 km

## Origins (1/2)

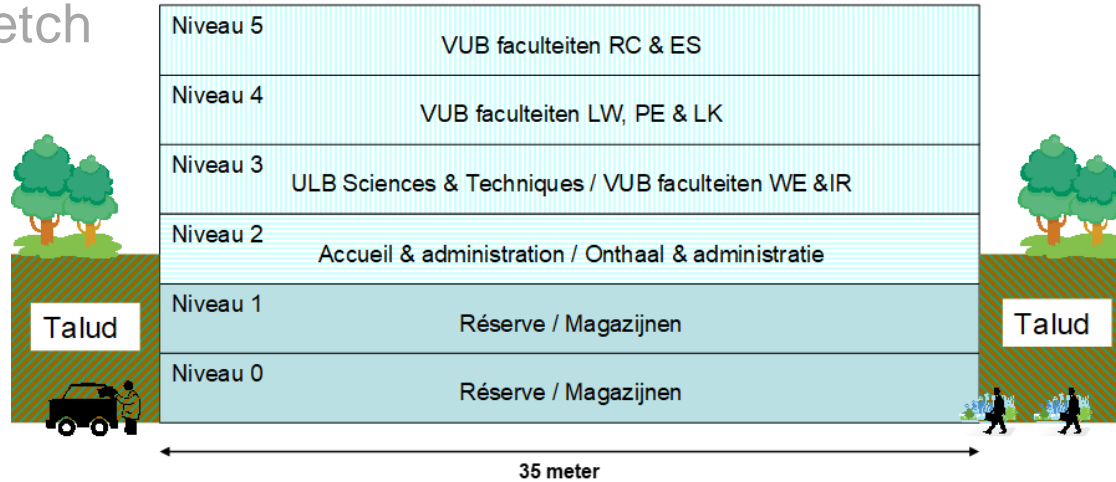
---

- The first plans for a joint Library & Learning Center were made in 2008
- During that phase the scope was to create a new building for the Central Library of the VUB with a joint Sciences and Engineering library located on the border between the two universities of the campus Pleinlaan.



# Origins (2/2)

- 2010 sketch



## Current scope (1/2)

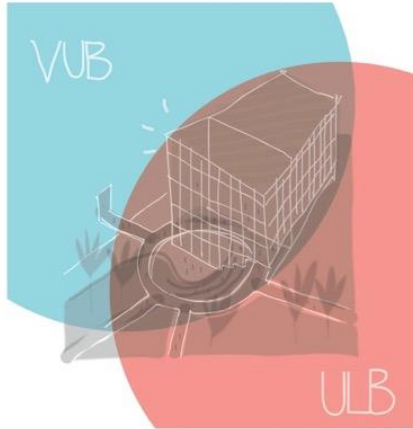
---

- A Learning and Innovation Center (LIC) for VUB & ULB located on the border of both campuses of the Campus Pleinlaan in Etterbeek
- Providing an environment with leading edge learning & teaching technology, functionality and facilities
- The LIC contains a joint library for the Sciences and Applied Sciences

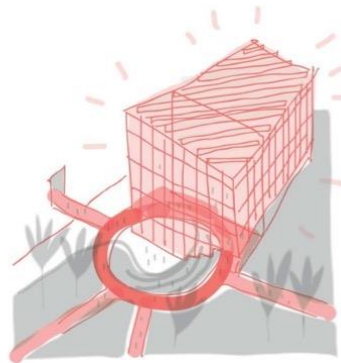
# Current scope (2/2)

---

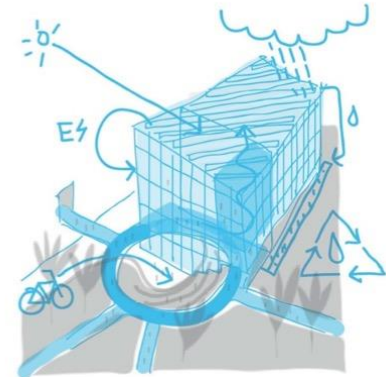
**SYMBOL OF COLLABORATION BETWEEN THE 2 UNIVERSITIES**



**ARCHITECTURAL LANDMARK**



**BENCHMARK FOR SUSTAINABILITY**

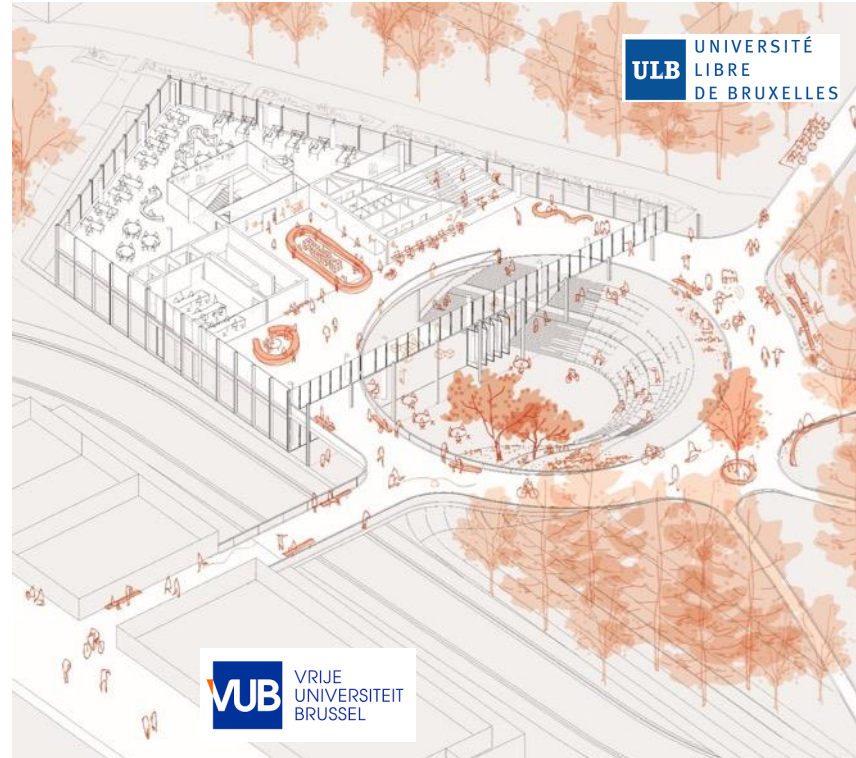
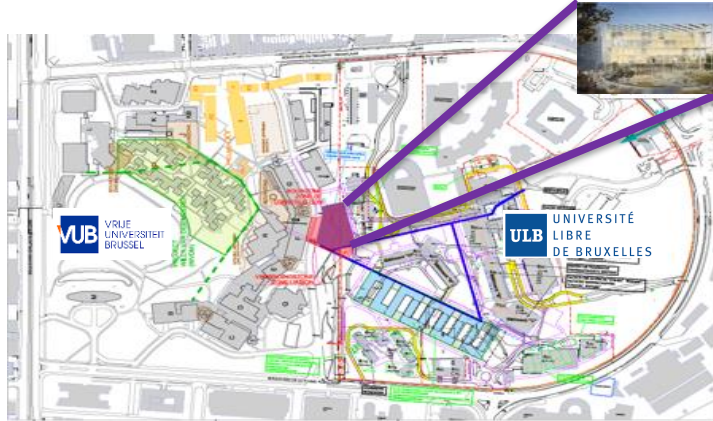


## The ambition / focus

---

- A joint building to share knowledge in a fast changing technological environment
- A smart building with highly advanced equipment and inspiring rooms
- A new learning experience for students and researchers
- Compliant with the highest sustainability criteria
- Embedded in an open and accessible public environment

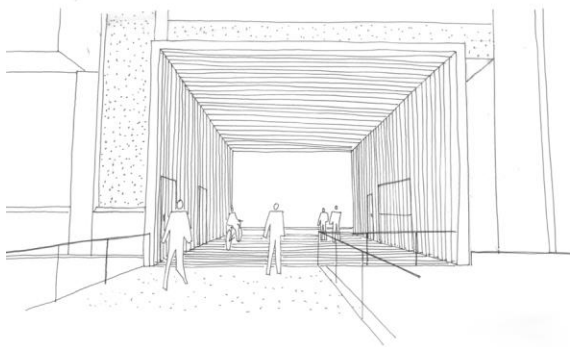
# Integration on the Pleinlaan Campus



# Connecting both universities

---

- Joint landmark located on the university border: building bridges
- A roundabout in front of the building that connects the ULB with the VUB and the VUB with the ULB
- A walkway through the building F to the VUB esplanade



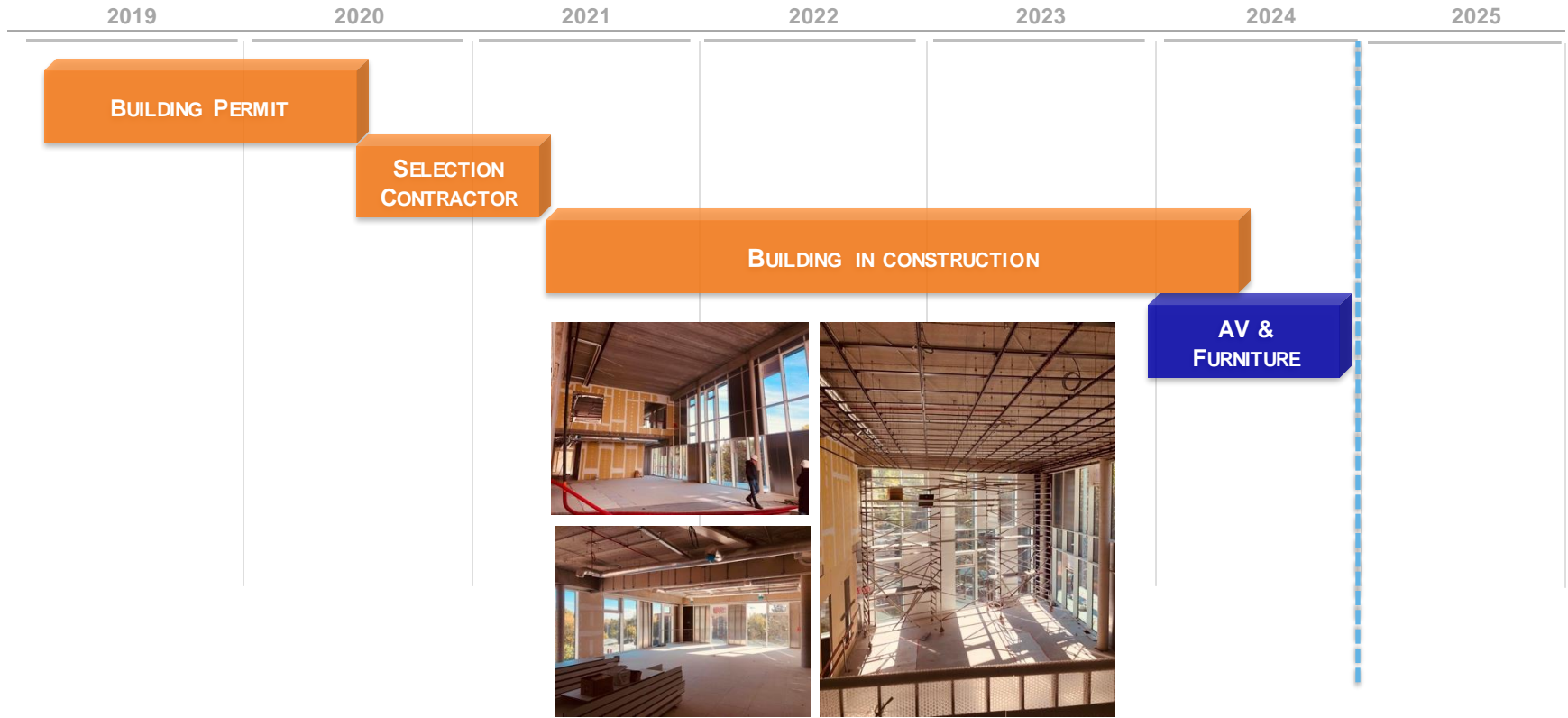
# The building

---

- 33 MIO investment: 21 MIO for the building and 11,5 MIO for the smart functionalities, equipment, technology, environment, utilities
- Federal funding for almost 90% of the 21 MIO via BELIRIS
- 8000m<sup>2</sup> with 7 functional floors
- Seating for approx. 1000 visitors
- Construction work started in 2022 and the opening is planned for 2025



# Timeline



2019

2020

2021

2022

2023

2024

2025

BUILDING PERMIT

SELECTION  
CONTRACTOR

BUILDING IN CONSTRUCTION

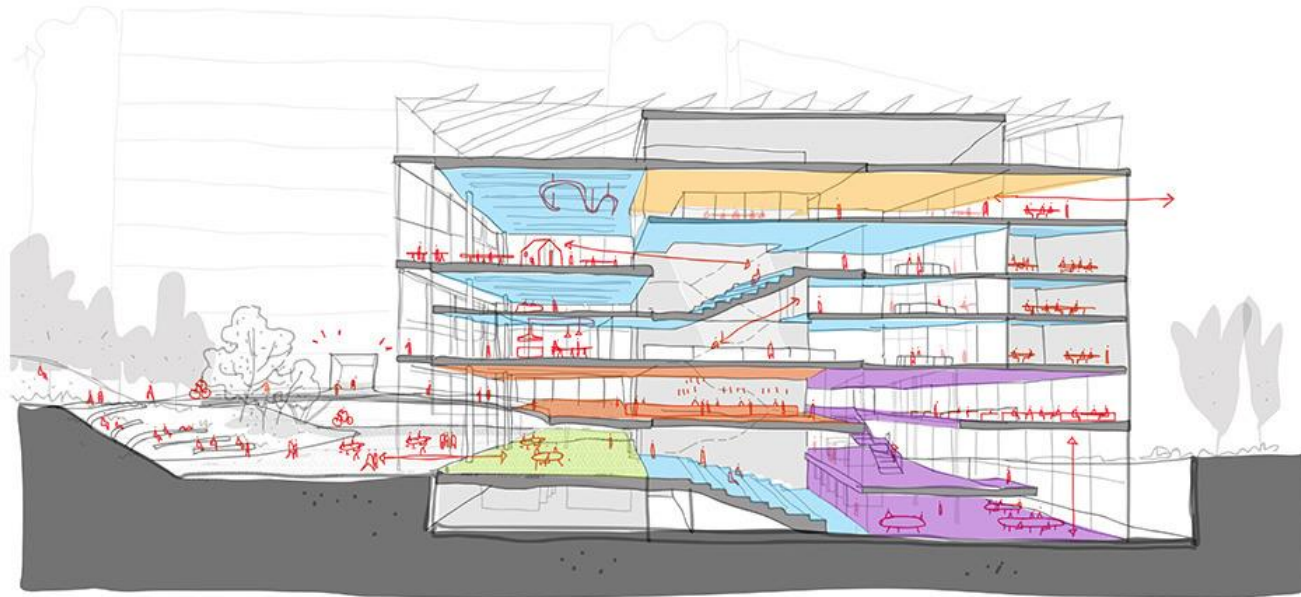
AV &  
FURNITURE





# Outside impressions (1/2)

---



## Outside impressions (2/2)

---



## Outside (dd 20/03/24)



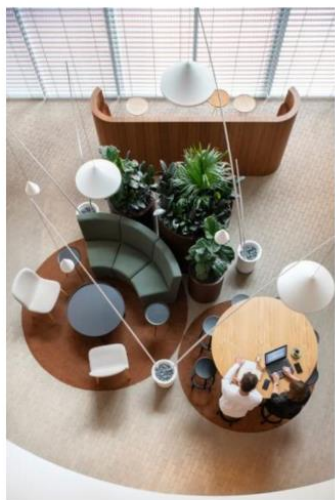
## Outside (dd 20/03/24)



# Inside impressions



# Mood boards (1/2)



# Mood boards (2/2)



HOUT



TERRA COTTA



DONKERGROEN



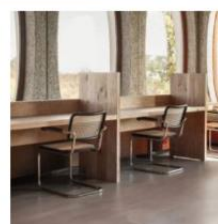
WIT METAAL



OLIJFGROEN



CHAMPAGNE



# Joint Library

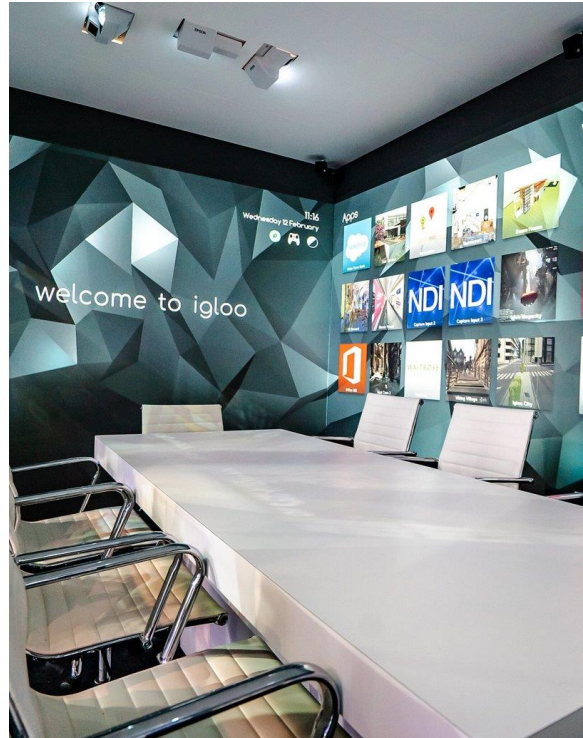
---

- Joint library is located on 3 floors of the LIC: -1, 0 and +1
- Focus on digital content
- Access to the digital content will be covered in the LIC via each university's own network for their own collection: Wi-Fi access (ULB > ULB network & VUB > VUB network based upon login)
- Limited printed material in reading rooms (not loanable), most of the collection in the stacks via high density mobile shelving (compactus) in the basement (available via stack requests)
- Library as a third place
- Silent zones
- Training & information literacy



# Technology

- Collaboration rooms
- Microsoft Teams classrooms
- Hybrid meeting rooms
- Promotion room
- Auditorium
- VR / Immersive room
- Recording studios
- Digital signage and wayfinding
- Remote management



# Credits

- Images and photos from Beliris - Boco Studio (s1, s11, s14, s15, s18-s20) and me (s16-s17)
- Information from slides of Annick Faveere (s8 & s13), Serge Gilen (s22), Paul De Knop (s7) and Patrick Vanouplines (s6)

**stefaan.renard@vub.be**