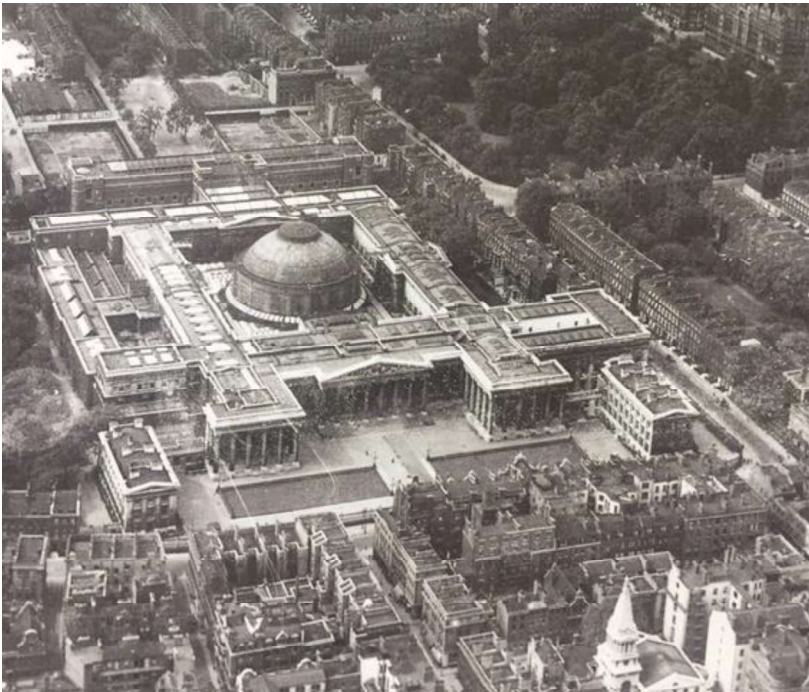


# The British Library: Building the Future at St Pancras

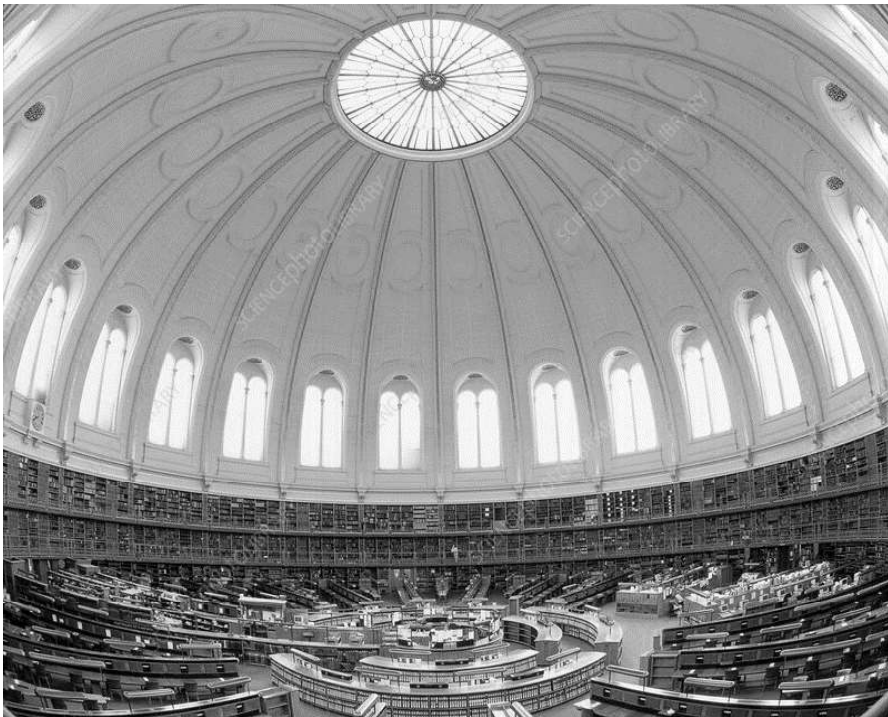
Roly Keating, CEO

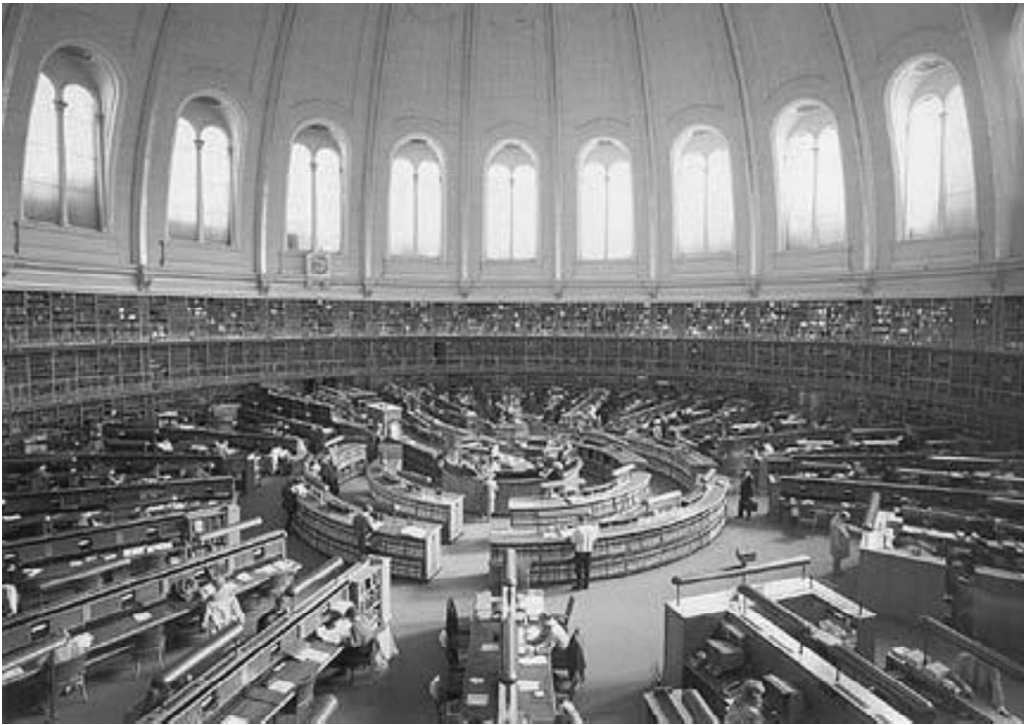
LIBER Architectural Group – 24 April 2024





# LIBRARY HSILIBB







# British Library Act 1972

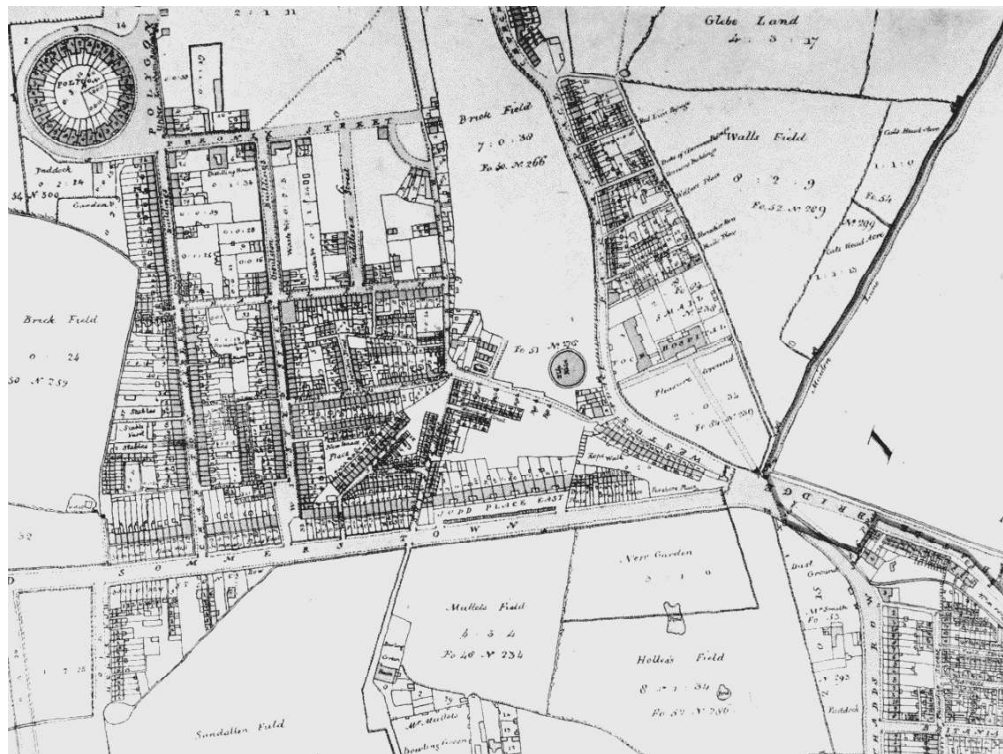
CHAPTER 54

## ARRANGEMENT OF SECTIONS

### Section

1. The British Library.
2. The Board.
3. Transfer of British Museum Library.
4. Further provisions as to the Board.
5. Finance and accounts.
6. Consultation on terms and conditions of employment of staff.
7. Citation.

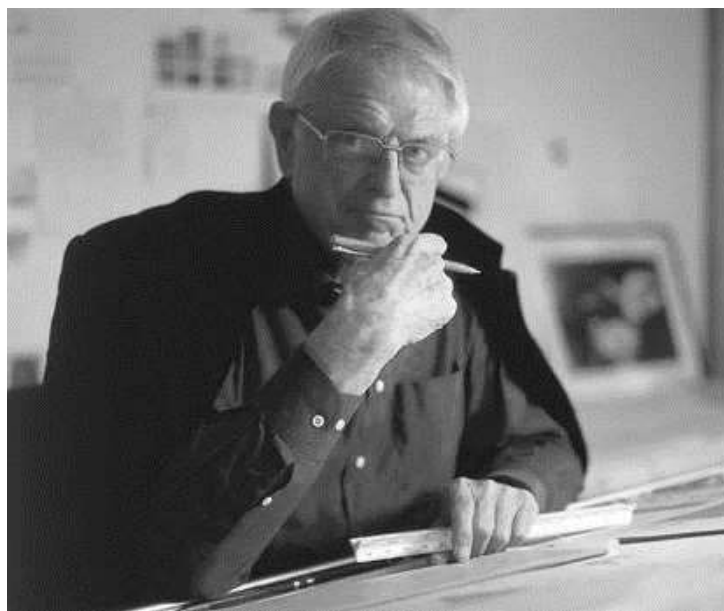
SCHEDULE—The British Library Board and its Advisory Councils.







**Colin St John ('Sandy') Wilson**



**Colin St John ('Sandy') Wilson**

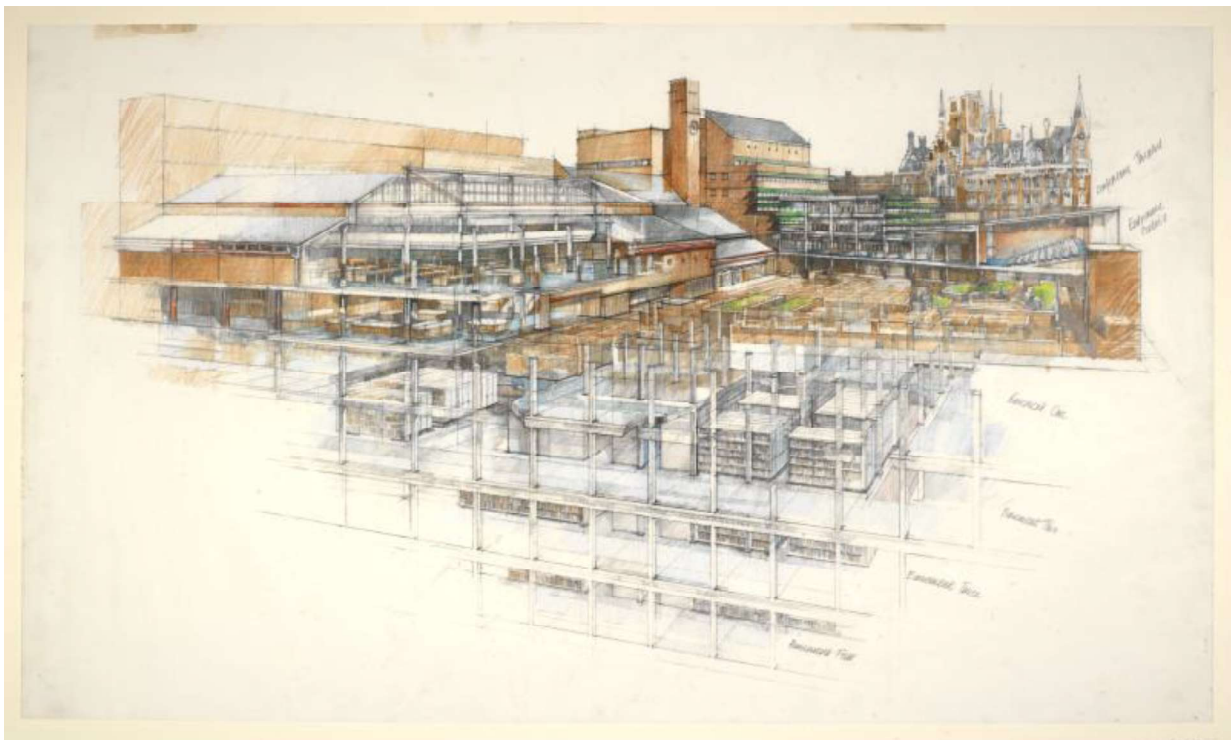


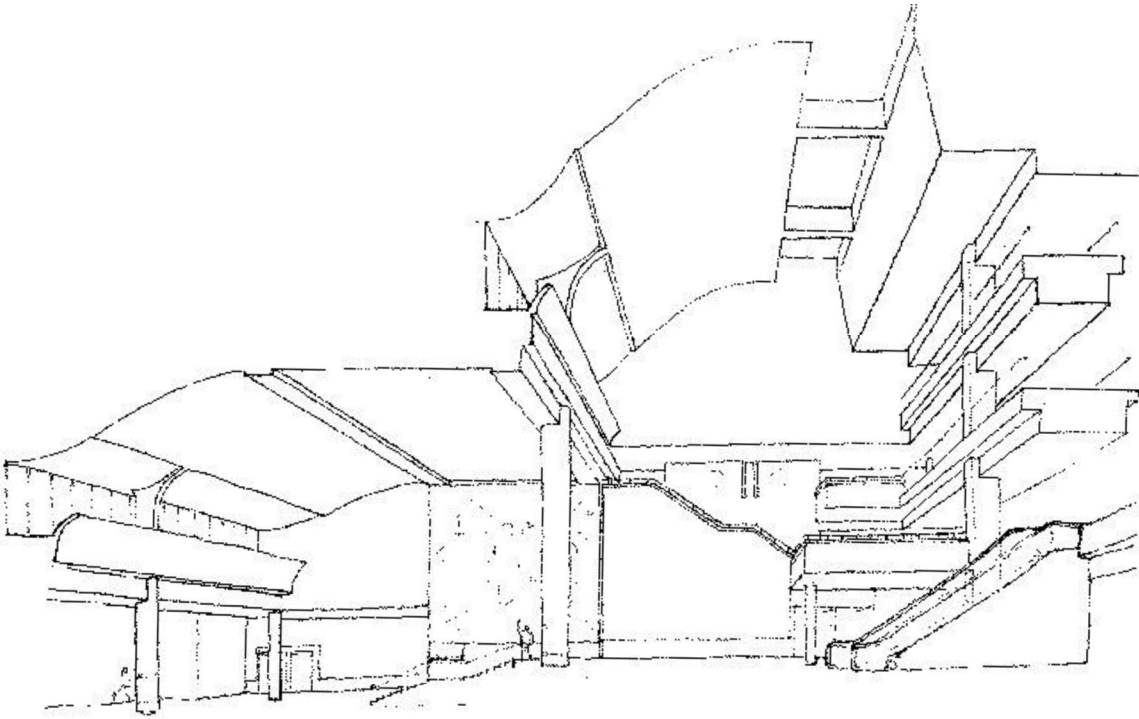
**M J Long**

# LIBRARY HSILIRB







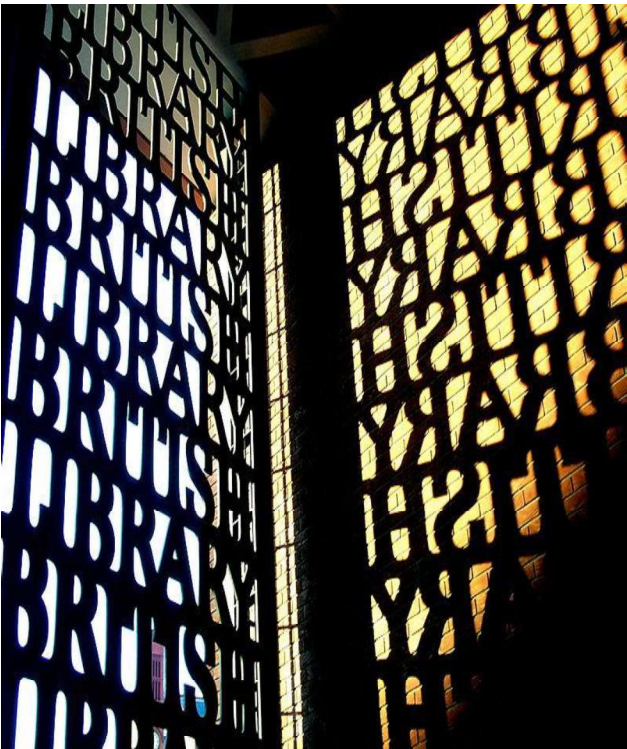








# LIBRARY BRITISH



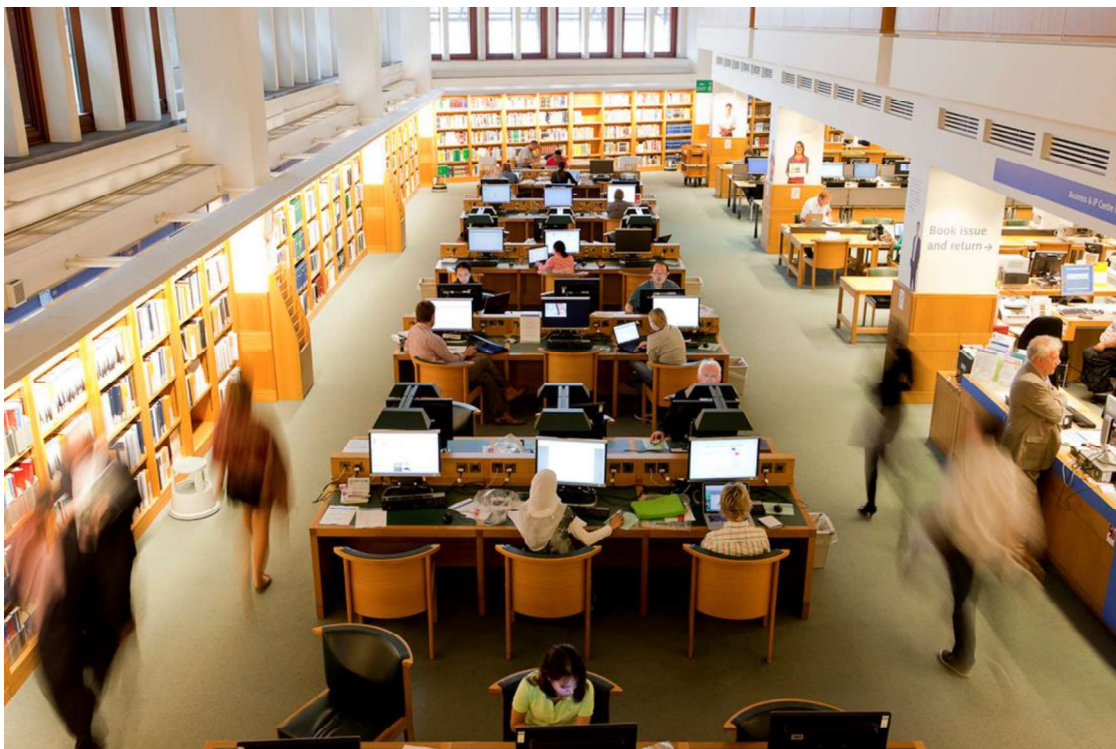


# BRITISH LIBRARY



# LIBRARY HSILIB





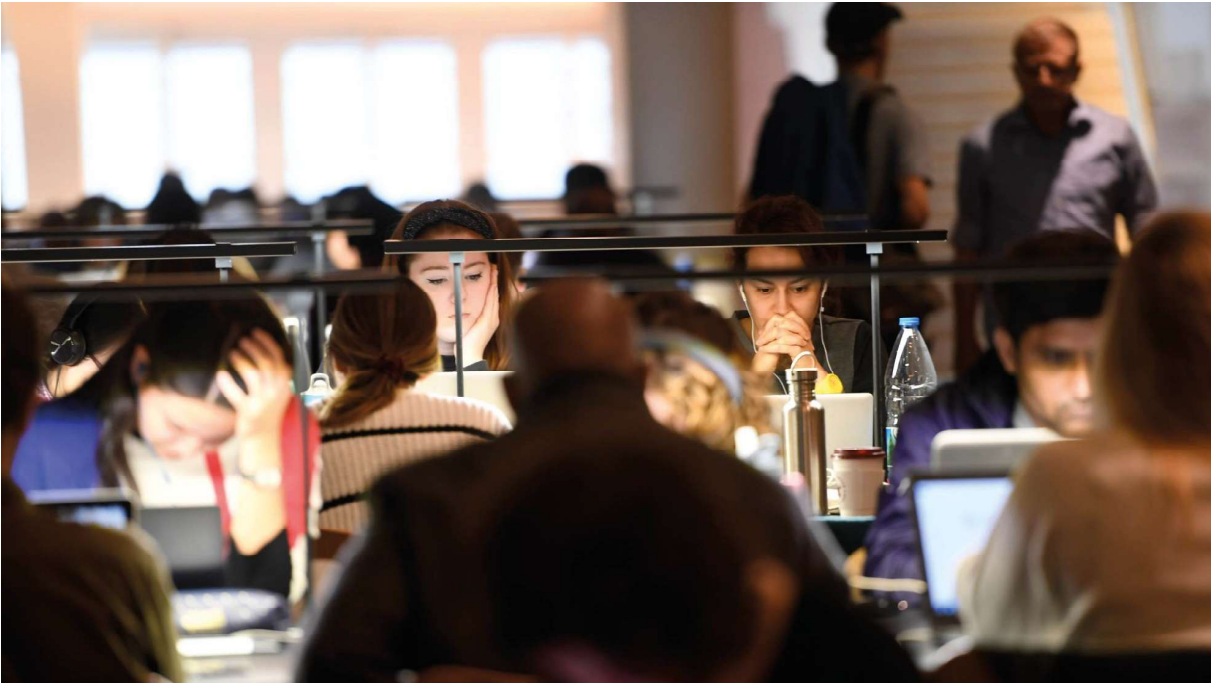
# LIBRARY HSILIB

# BRITISH LIBRARY

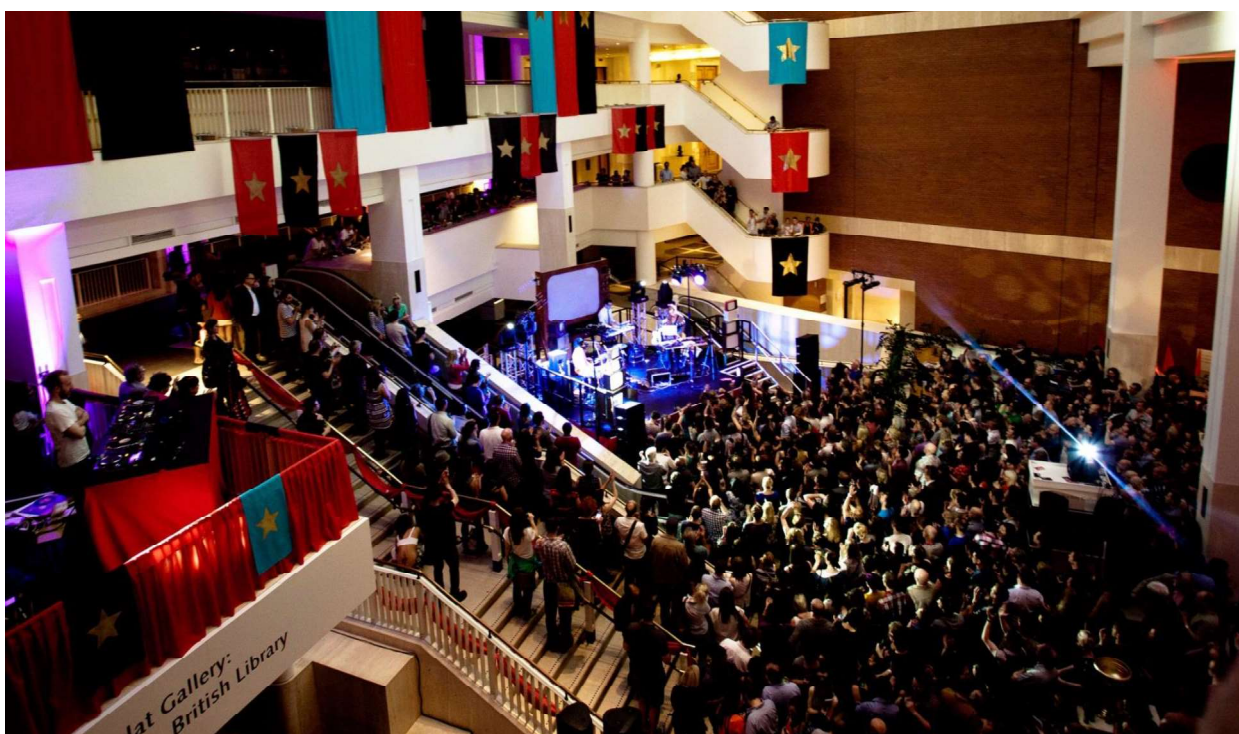


# LIBRARY HSILIB









# BRITISH LIBRARY



## British Library awarded Grade I-listed building status

Structure once called 'one of the ugliest buildings in the world' in parliament and denounced by Prince Charles now 'one of England's finest modern buildings'



▲ The British Library, the largest public building to be built in the UK in the 20th century. Photograph: DCMS/PA

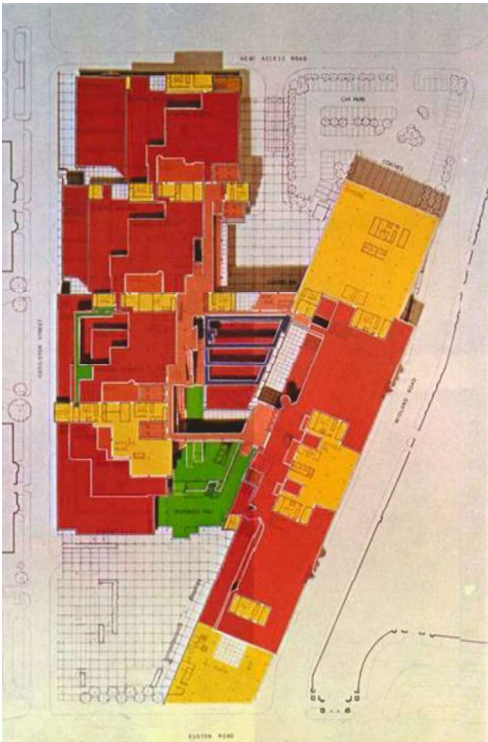
The British Library, once denounced by Prince Charles as a building suiting an academy for secret policemen, has been awarded the highest heritage honour, Grade I-listed building status.

The institution, on Euston Road, London, now a victim of its own success with scholars and researchers complaining of students and tourists crowding the reading rooms and cafes, was opened by the Queen in June 1998 - more than 20

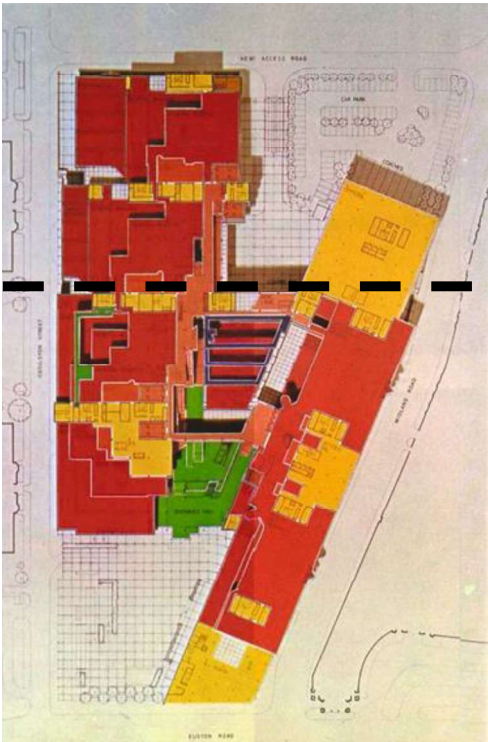
# BRITISH LIBRARY



# LIBRARY HSILIRB



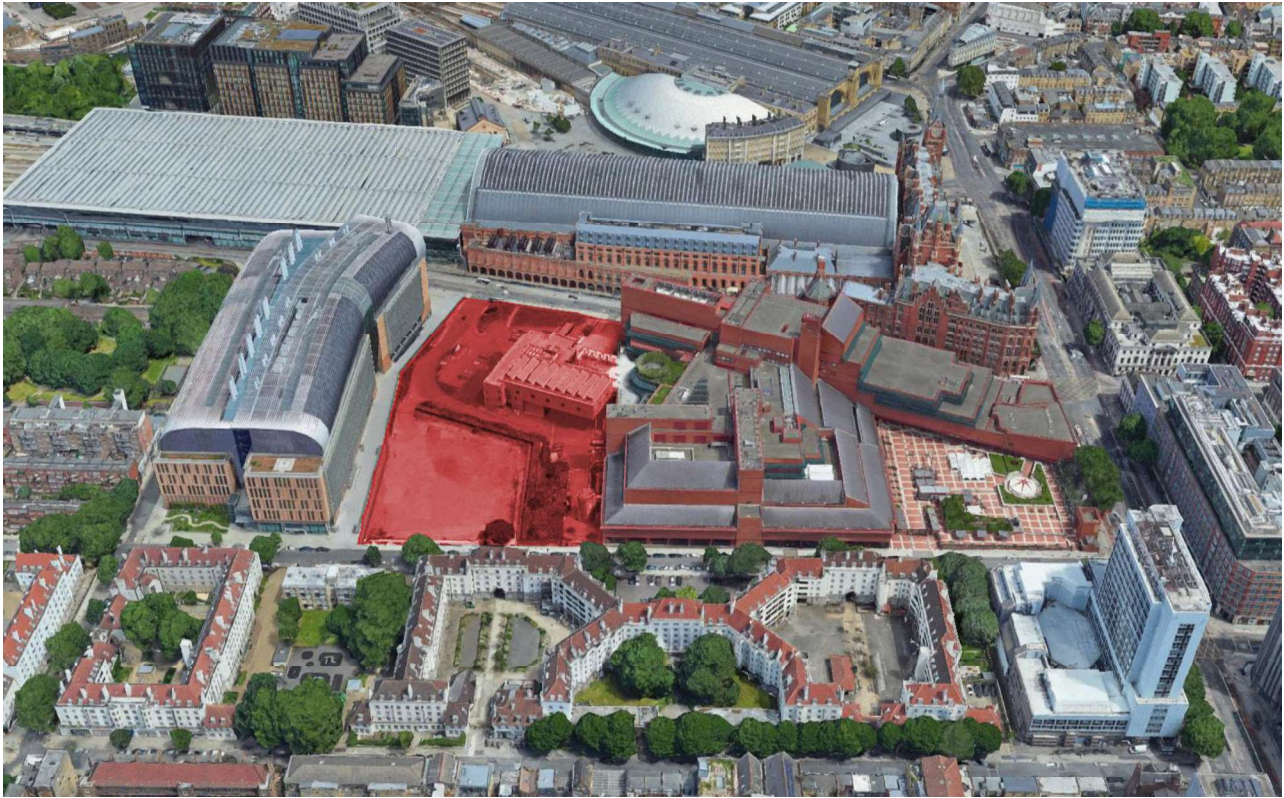
# LIBRARY HSILIBB





*“The Land to the North”*

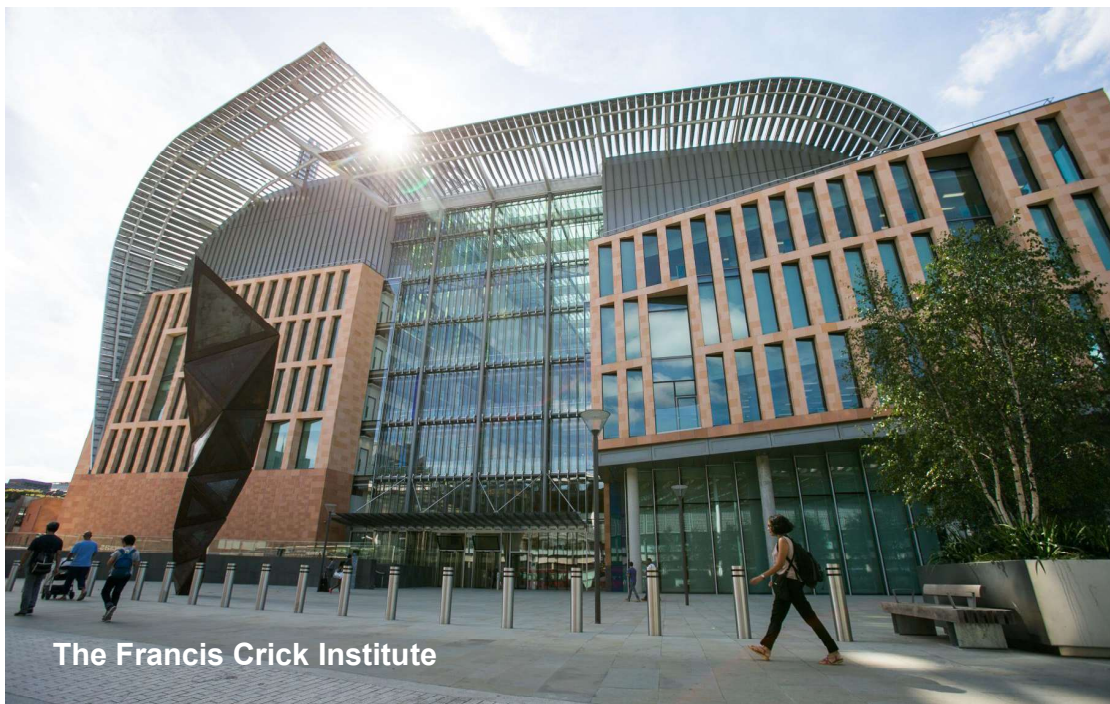




# LIBRARY HSILIB



# LIBRARY HSILIBB



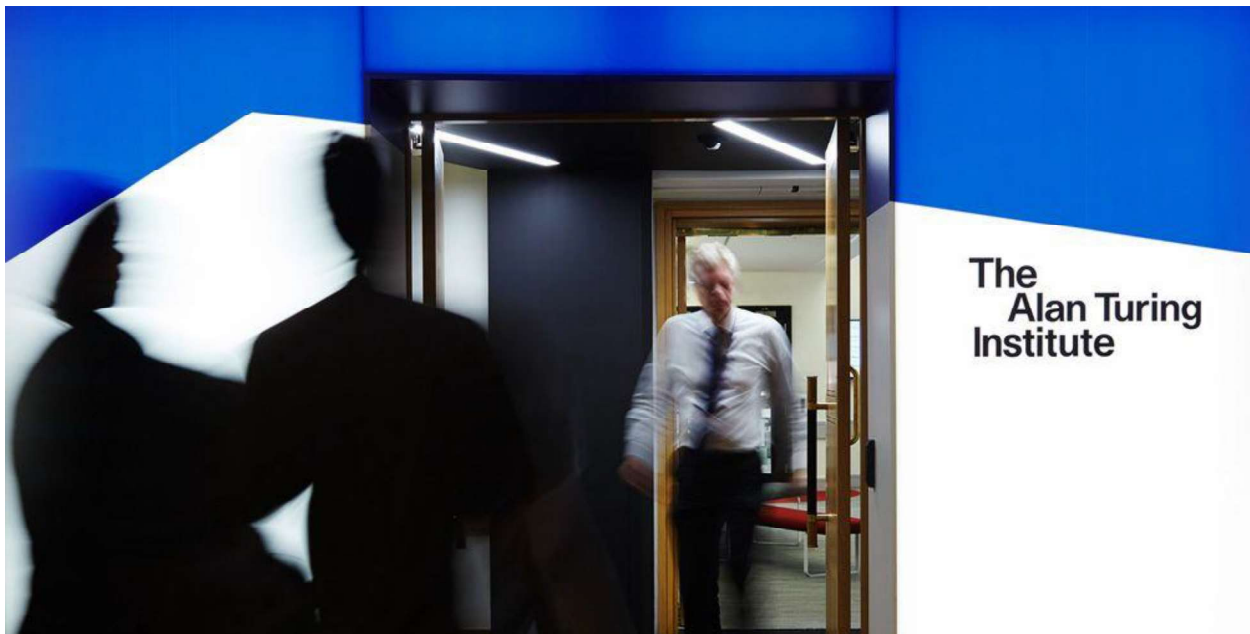
The Francis Crick Institute



[illegible]

















# BRITISH LIBRARY







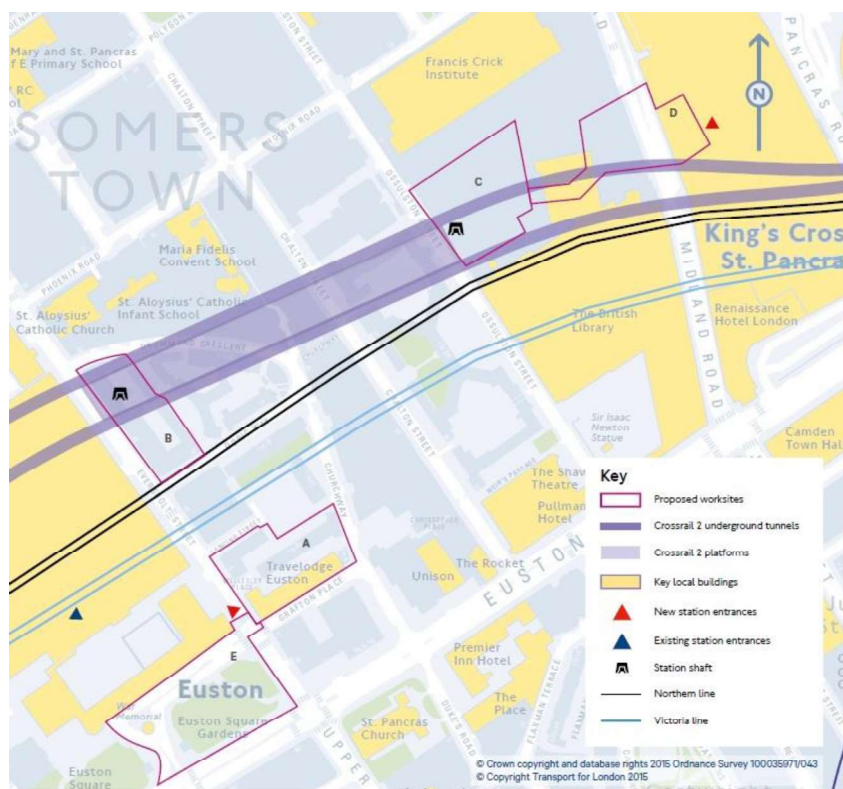
# LIBRARY HSILIBR

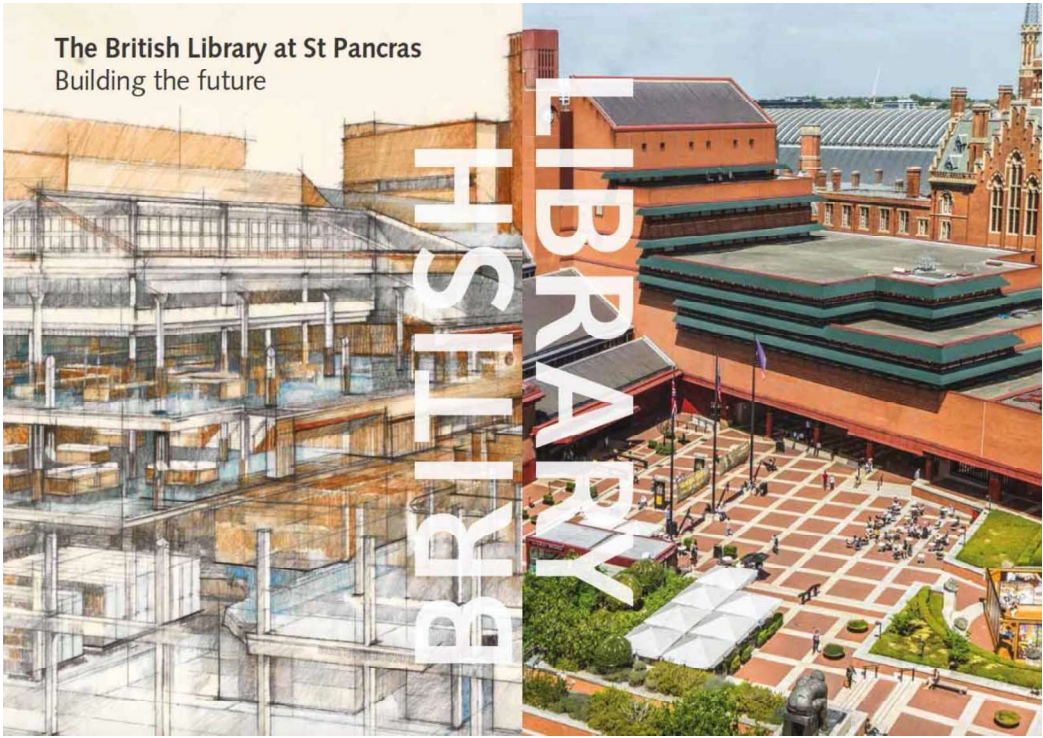












LIBRARY  
HSILIB

## St Pancras Transformed

- Major extension to Grade 1 London building
- 100,000 sq ft of new BL space over three floors
- New Learning Centre and spaces for events, community & business support
- New Exhibition Galleries – doubling overall volume of gallery space
- New community-focussed foyer with entrances to East and West
- Permanent HQ for Alan Turing Institute
- Rentable space for life sciences and other Knowledge Quarter tenants
- Underground infrastructure for Crossrail 2

**STANHOPE**

**STANHOPE**



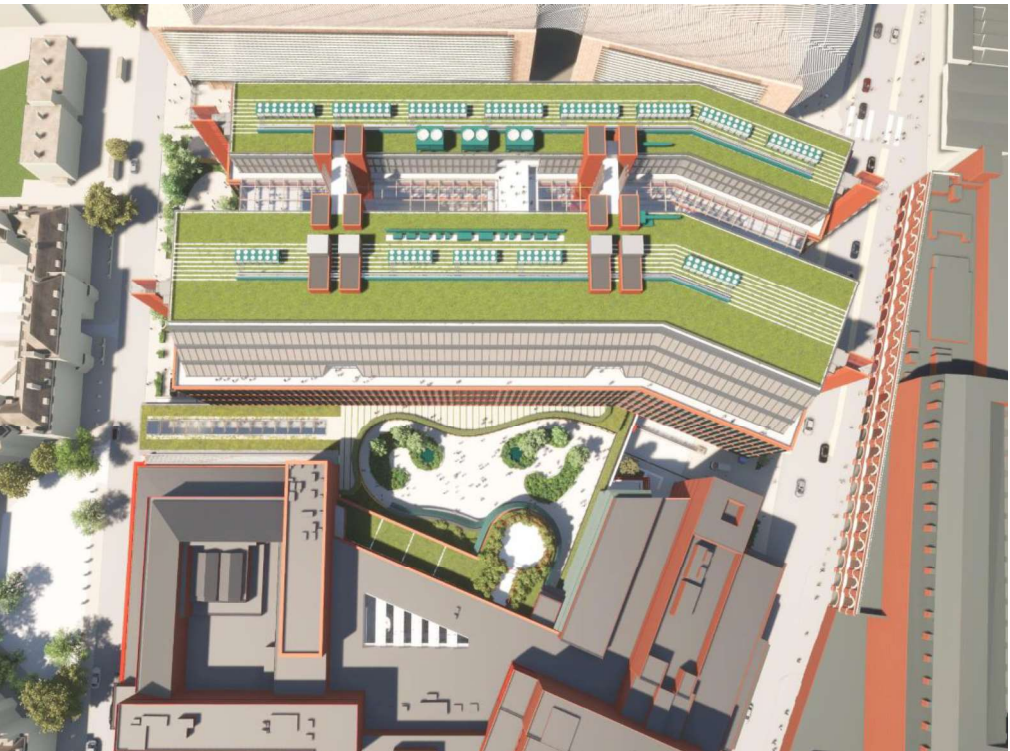
mitsui FUDOSAN



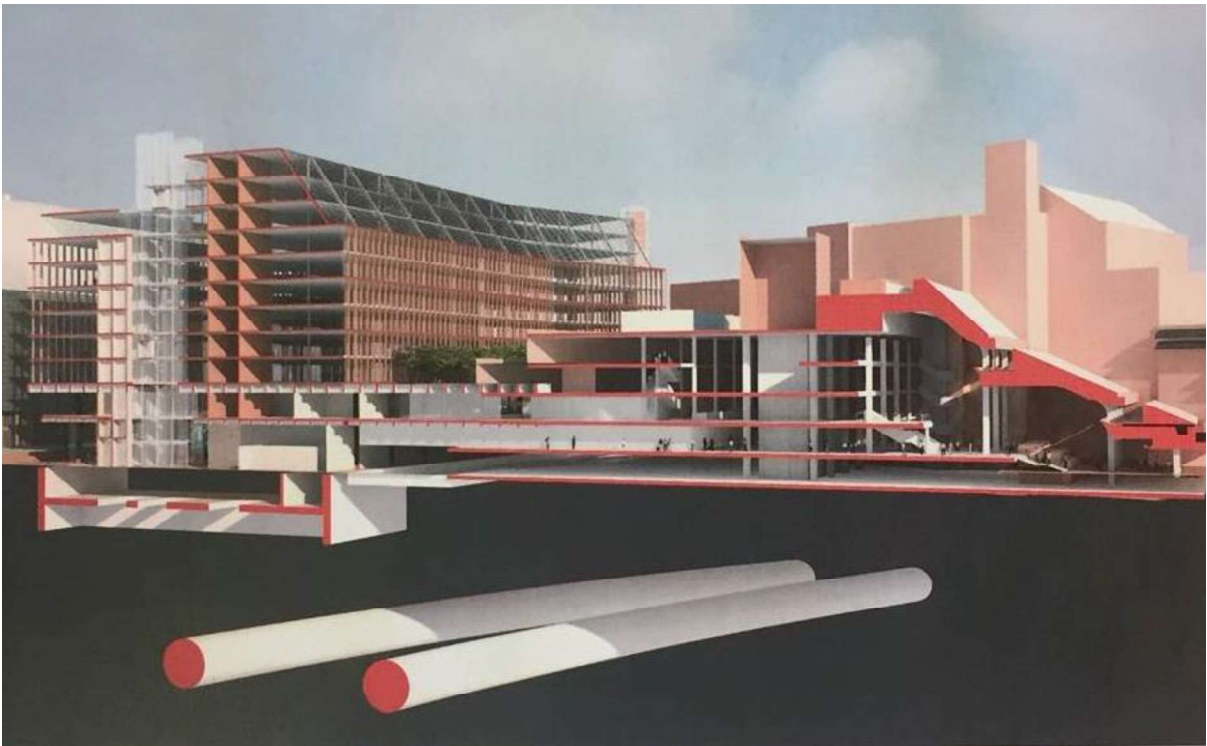
**STANHOPE**



# LIBRARY HSILIB



# LIBRARY HSILIBB



# BRITISH LIBRARY



# BRITISH LIBRARY



# BRITISH LIBRARY



## Engaging with the local community



### 5X WEBINARS

HELD WITH LOCAL STAKEHOLDERS  
AND COMMUNITY REPRESENTATIVES  
IN NOVEMBER AND DECEMBER 2020



### CONSULTATION WEBSITE ONLINE

AND UPDATED REGULARLY, INCLUDING  
WITH DETAILS OF WEBINARS AND TWO  
CAMDEN DMFS



### 2 X DEVELOPMENT MANAGEMENT FORUM'S WITH CAMDEN COUNCIL



### 63 PIECES OF ONLINE FEEDBACK RECEIVED ON PROPOSALS



### 13,000 PEOPLE

IN LOCAL AREA RECEIVING TWO  
COMMUNITY NEWSLETTERS AND  
LETTER INFORMING OF CAMDEN DMF



### MEETINGS HELD WITH LOCAL ORGANISATIONS INCLUDING CAMDEN YOUNG CITIZENS SCIENTISTS



### REGULAR INFORMATION UPDATES TO 90 STAKEHOLDERS AND ADDITIONAL MEETINGS HELD



### ENGAGED LOCAL GROUPS TO REACH HARD TO REACH PEOPLE IN THE COMMUNITY



### DESIGN REVIEW PANELS WITH CAMDEN COUNCIL ON 23 OCTOBER 2020



### APPEARANCE IN CAMDEN NEW JOURNAL NEWSPAPER

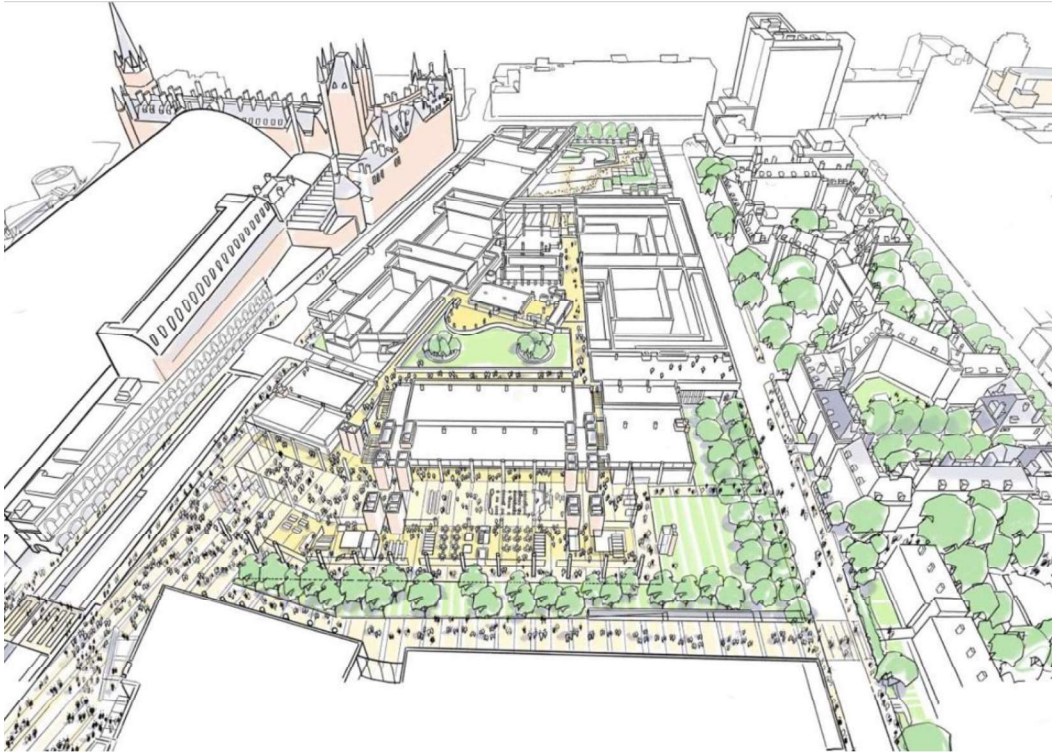


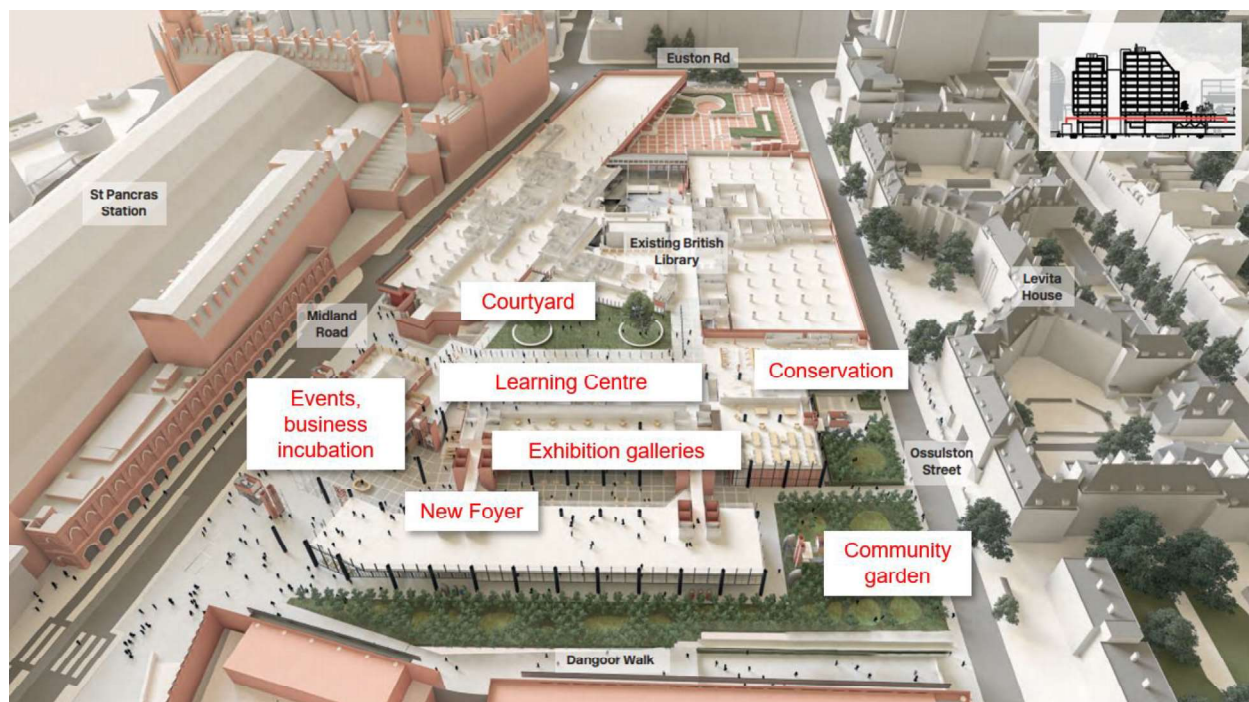
### SOCIAL MEDIA ADVERTISING REACHING OVER 80,000 PEOPLE



### OVER A DOZEN MEETINGS WITH CAMDEN COUNCIL OFFICERS TO DISCUSS THE EMERGING DESIGNS

# LIBRARY HSILIBB





## New northern foyer: welcoming, multi-functional, diverse



Displays & Public Art



The Library in Somers Town



Family Zone



Evening Activities



Homework Zone



Connecting the KQ to Schools



Community Meetings & Debates



A Place to Meet Locally



Insights to Skills, Careers & Ideas



The Local Community



Community Activities



After School Clubs & Activities



# LIBRARY HSILIB





# LIBRARY HSILIB







# BRITISH LIBRARY





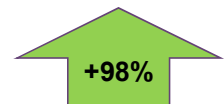
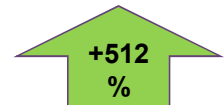
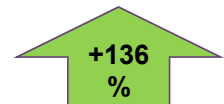
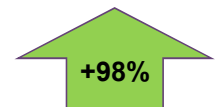
# LIBRARY HSILIRB



## Learning



- 53,000 school visits per year
- 100% of Camden schools
- 5,200 adult learners
- 2400 Access & Inclusion visits
- 8640 family visits



## Business Support

---



- New incubator space accommodating c60 start-ups



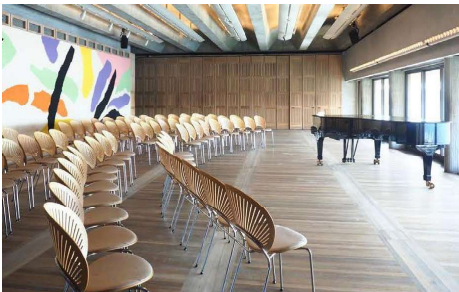
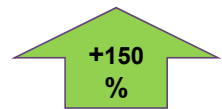
- New maker space facilitating c7200 visits
- 1800 attendees to B&IP events



## Events



- 126k visitors to cultural events pa



- 74k visitors to commercial events pa



- £1.4m commercial revenue pa



## Exhibitions



- 227k visits to major exhibitions
- 1M visits to Treasures etc.
- £2m net revenue



# Green Spaces & Diverse Habitats



View of new courtyard towards Midland Road and St. Pancras Station



View of new courtyard towards Midland Road and St. Pancras Station

LIBRARY  
HSILIB

# Sustainable Development



1. Partnerships to magnify the positive outcomes of the BL project across wider communities



2. Creating an inclusive place that adds social value to the local Camden area and community



3. Targeting net zero carbon and future resilience through integrated design



4. Creating a hub that supports innovation and delivers economic sustainability



5. Using the available space to focus on biodiversity quality (not quantity)



6. Using the Library project to support local residents and stakeholders



LIBRARY  
HSILIB

LIBRARY  
HSILIB

Thank  
you

