

Two new library buildings for Bern University Library

u^b

b
UNIVERSITÄT
BERN

vonRoll

on a former industrial site,
and the new **Central Library**
in its old historic building

Christian Lüthi

Head of Resources

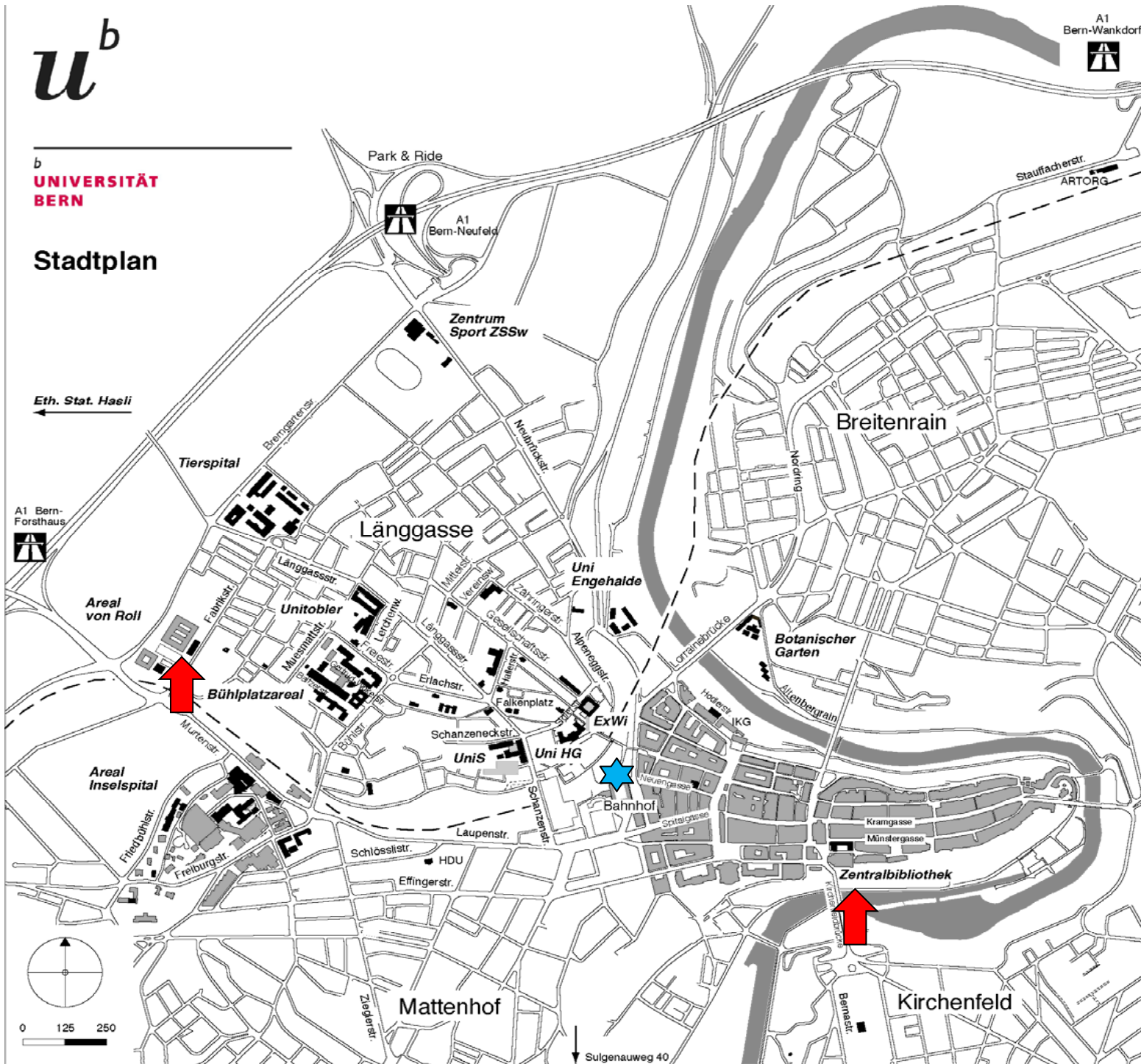
Bern University Library



u^b

b
UNIVERSITÄT
BERN

Stadtplan



u^b

b
UNIVERSITÄT
BERN



Facts about higher education in Bern

- > Bern University
9 faculties, full range of subjects (no technical studies)
17'000 students (2013; 2000: 10'000 students)
- > College of education (Pädagogische Hochschule)
Studies for teaching on all levels
2400 students
- > Berner Fachhochschule: Colleges for economics, cultural studies (music, art, theatre, design etc.), architecture and technical studies, social work, health care
6700 students

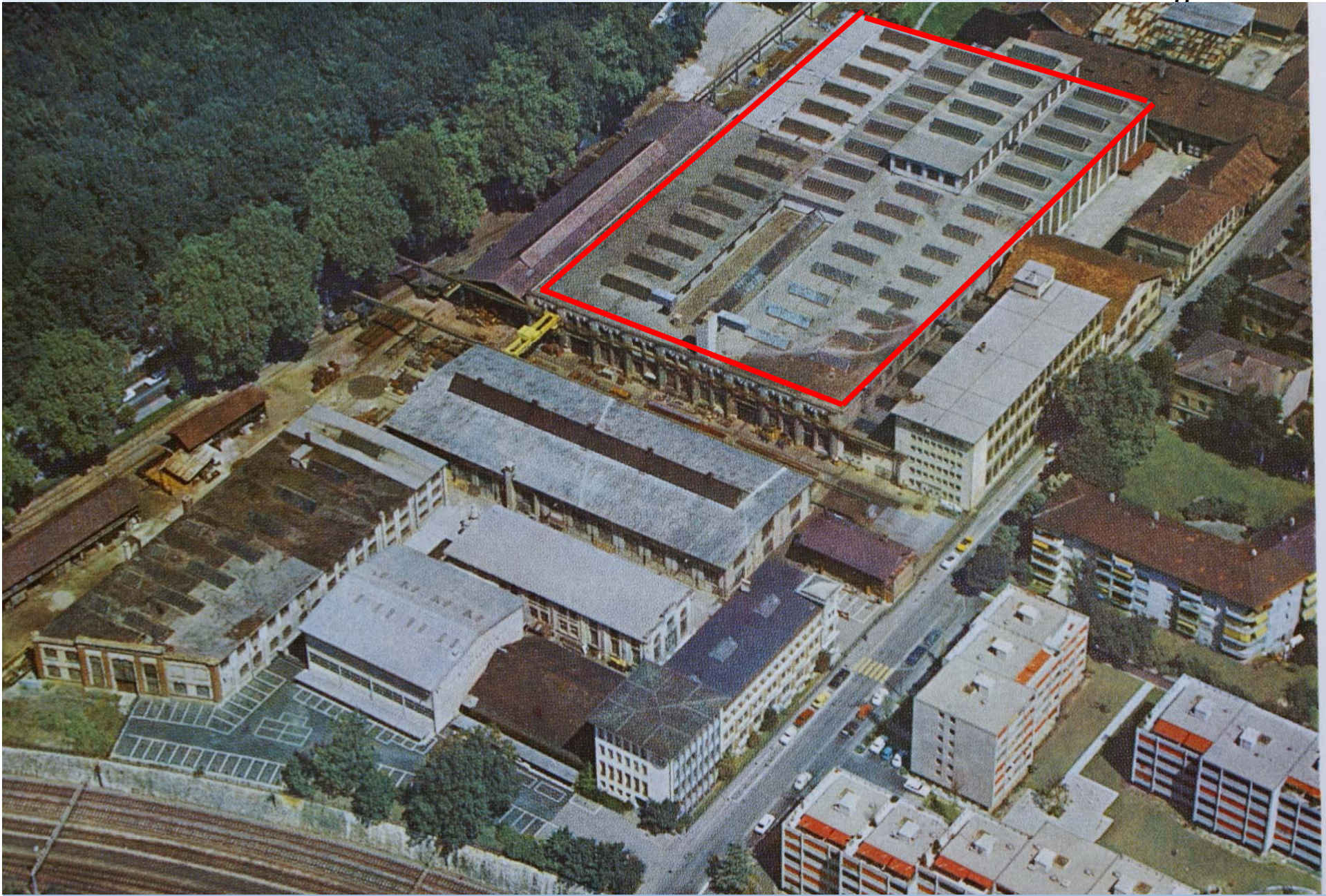
vonRoll: new university campus

u^b

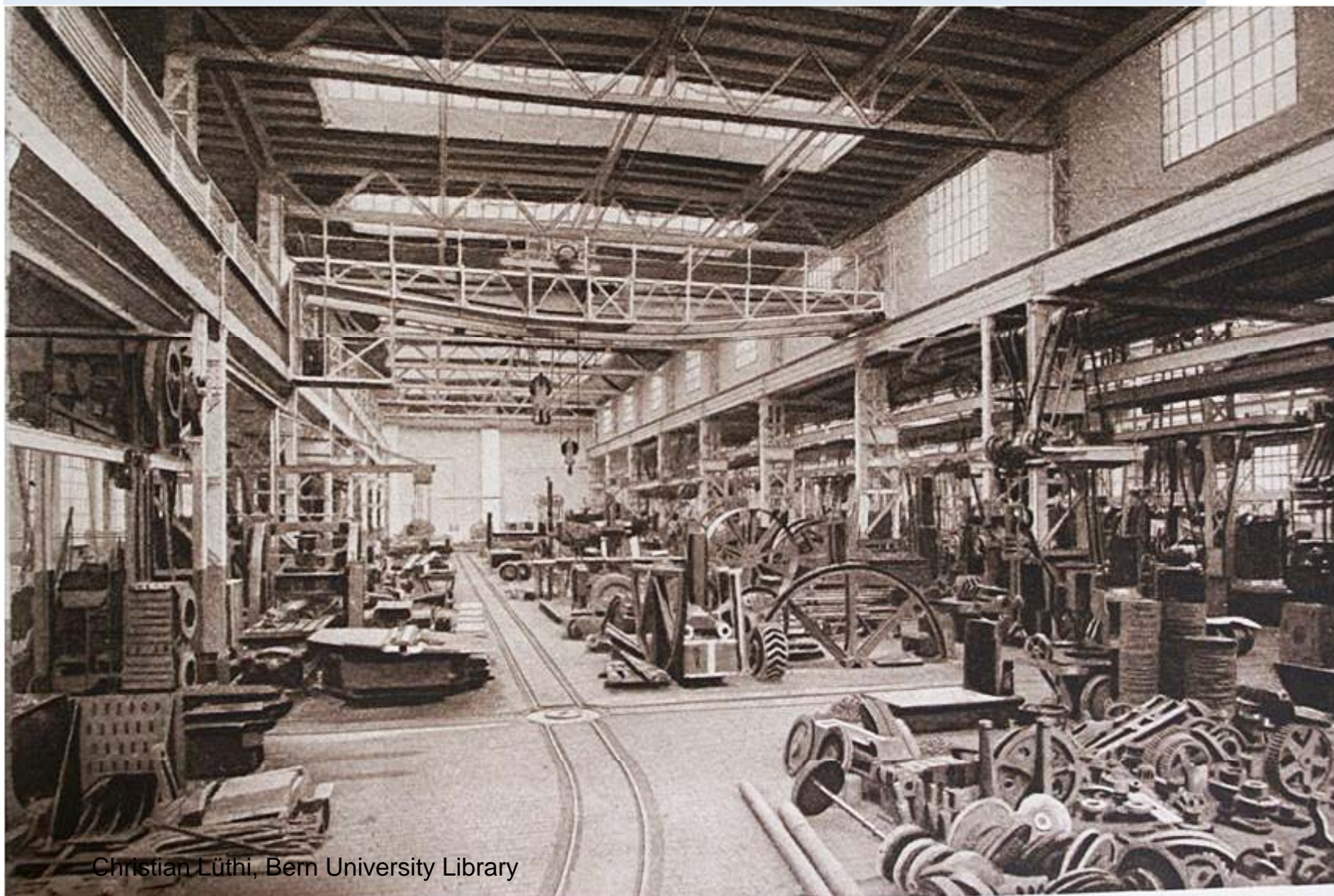
b
UNIVERSITÄT
BERN



b



Von Roll: construction hall in 1920



Planning the new site: Milestones

- > 1997 von Roll stops the production in Bern
- > 1999 City of Bern: rebuilding plan for the von Roll site
- > 2000 Canton of Bern buys 2/3 of the site for a new university campus
- > 2003/2004 Architecture competition by the Canton of Bern
Winner: Giuliani-Hönger Architects Zürich
- > 2005 Project starts
- > 2007 Parliament approves the project budget (230 mio. CHF)
- > 2007-2010 Industrial hall (Weichenbauhalle) is renewed as a lecture hall building
- > 2010-2013 Institute and library building
- > Costs 2013: 29 mio. CHF for lecture hall building, 156 mio. CHF for institute and library building

Campus for higher education vonRoll

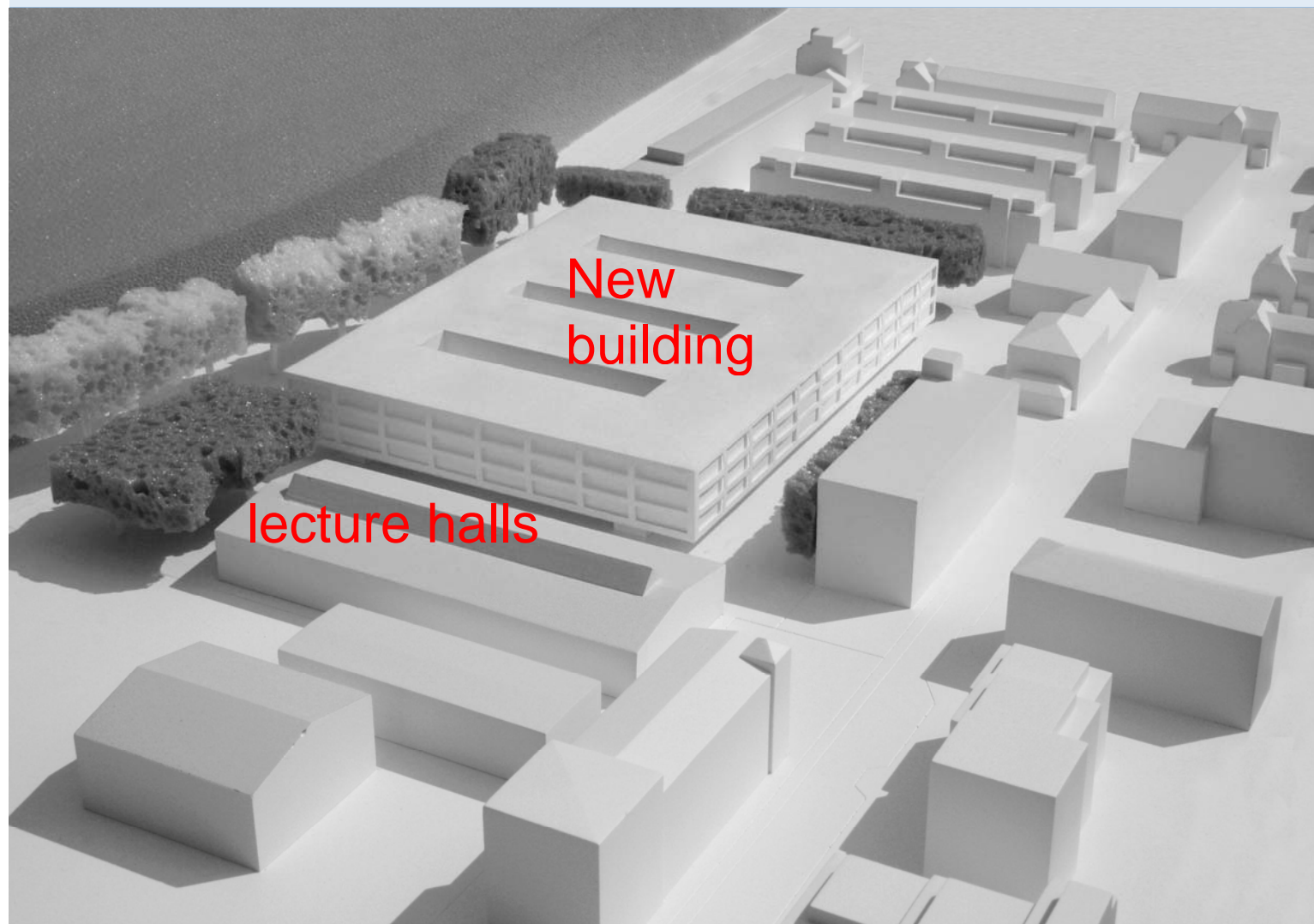
Campus for the University and the College of education

- University: Social sciences
- College of Education
(4500 students, 850 collaborators – both institutions)
- Library:
Merging 5 existing libraries into one
New central stacks (80 shelf kilometers)
- Room programme:
300 office rooms, spaces for teaching, canteen, parking
space for 1000 bicycles (1st basement story)

Architecture model 2004

u^b

b
UNIVERSITÄT
BERN



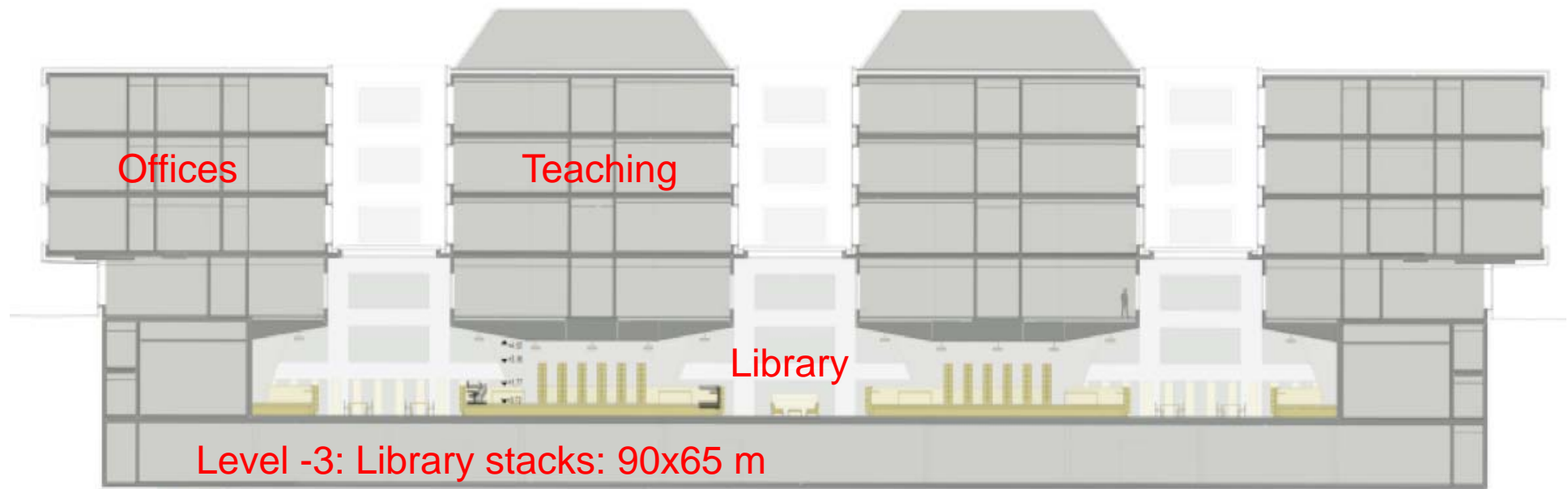
2009





September 2013

Cross-section of the building



Längsschnitt 1 (Podest)





Open access library in construction, August 2012





Storage facility

- > Central stacks for the University Library
- > 81 km shelves, expandable to 100 km
- > Ideal storage conditions (18° C, 45% humidity, under control)
- > Quarantine room for new collections
- > All books listed in the online catalogue

- > Main challenges 2013:
 - efficient storage (according to user demand and formats)
 - configuration the compact storage (formats, density)



2012





J3-8
XXXXXX

J3-9
Jus XXXX 1 - 98T
XXXXXX

J3-10
Jus XXXX 20Z - 2748
XXXXXX

J3-11
Jus XXXX 2749 - 4858
XXXXXX



Grundrisschema und Einlagerungsplan Speichermagazin vonRoll

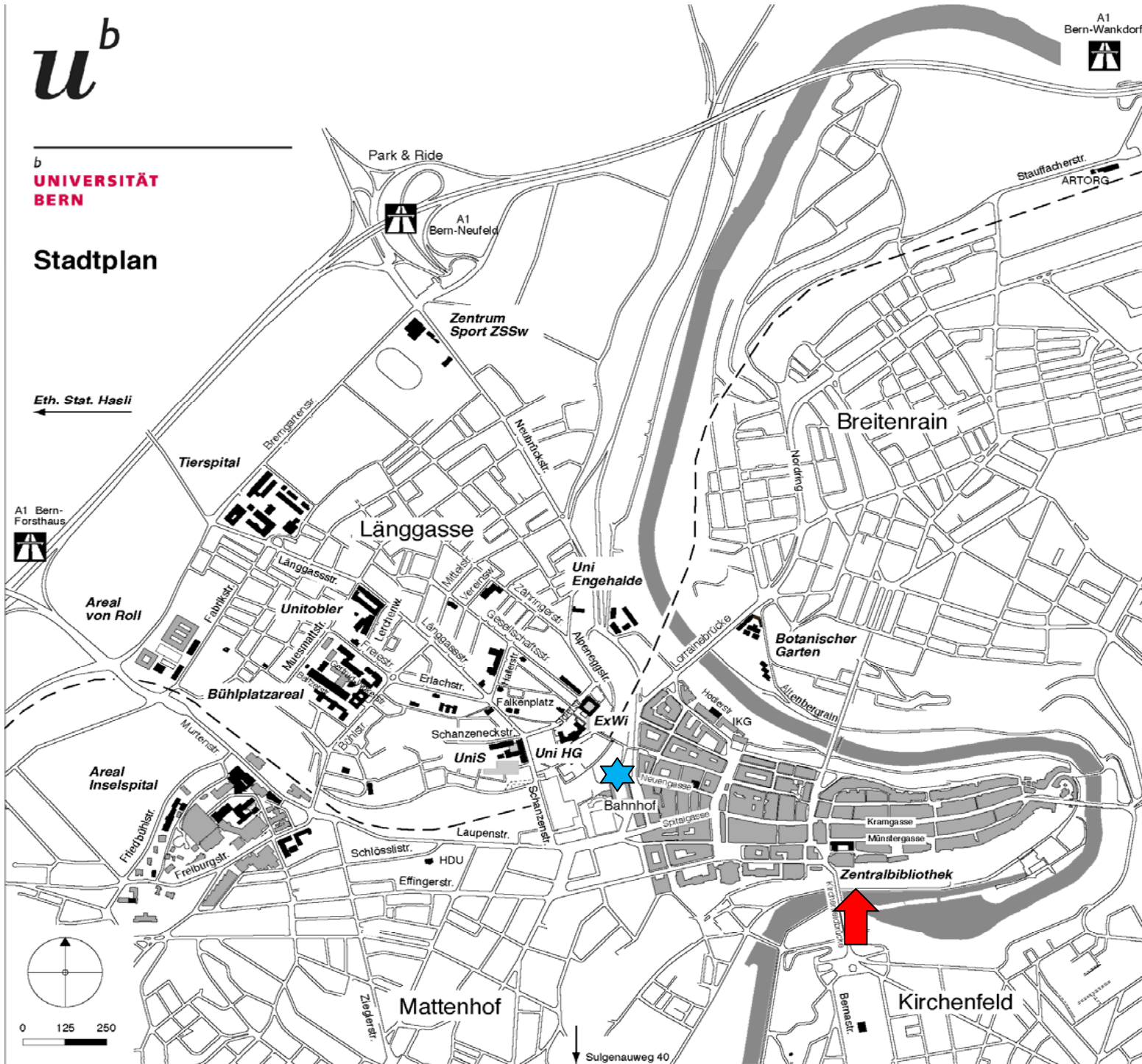
| | | | | | | |
|--|--|--|--|--|---|--|
| L1 (84) ZB Diss, Thèse, ERA-ERD (inkl. Zuwachs), Alter AK (2460/1525) | L2 (69) ZB PP (röm Zahl) alter SK (2440/2390) | L3 (53) ZB PN (2330) | L4 (39) ZS PBA / ZB R ZS PBB (2200/2200) | L5 (39) ZB HZ / ZS PAA (1940/1940) | L6 (54) ZS PAB (2040/2040) | |
| K1 (80) frei (1750/0) | K2 (64) ZB Med Z (1500/1160) | K3 (53) ZB PN (1500/835) | K4 (32) ZS PBA / ZB I ZS PBB Zuwachs (1420/1000) | K5 (32) ZS PAA Allg Z H L-LIV (1470/1470) | K6 (49) ZS PAB frei (1550/400) | |
| J1 (80) ZB Nat (1990/1560) | J2 (64) ZB SM, GG, Num Z, Amer Z, Russ Z (2000/1445) | J3 (48) ZB Jus, Brosch, Hospes, Katalog (2000/1445) | J4 (24) ZB RAA / ZB F (2200/1200) | J5 (24) ZB RFA / ZS PAA (1900/1900) | J6 (49) ZB Jus Z, JL (1900/1920) | |
| H1 (66) ZB Med, Med vet, Math, Num, Rar, SW, Schallplatten (1640/1370) | H2 (48) ZB Geogr, Theol (1780/1600) | H3 (33) ZB Lit L-LIV, Jus var (1610/1610) | | H5 (13) ZB Hist I-XXXIX, LK Hist Mus (1640/1370) | H6 (39) ZB Hist I-XXXIX, LK Hist Mus (1640/1370) | |
| G1 (59) ZB Allg, Phil, Rom, CCB (1640/1470) | G2 (43) ZB L (1760/1640) | G3 (28) ZB L frei (1500/835) | | G5 (34) ZB Hist XL-L, Hist var (1760/1640) | G6 (34) ZB Hist XL-L, Hist var (1760/1640) | |
| | | F3 (31) ZB AL Folk, Germ MA (1870/1870) | F4 (30) ZB AL Folk, R MA Zuwachs NAC (1870/1870) | | | |
| E1, E2 (80) ZHB Archiv, Gross, Kp, Zes, Mus W, Rar alt, H I-XLIX, Thun (2180/1670) | E3, E4 (62) ZHB div. Singer (2450/1360) | E5 (64) ZHB div. Zeit, ZS PAC, PBC Kart (1300/640) | Treppe | E6 (35) ZHB div. LG (1990/1530) | E7 (36) ZHB div. (1980/884) E8 ZB Jus Z Q, Arch Z (1980/430) | E9 (50) ZB, Zeit Q, Lexica (1980/500) E10 ZB PP Q (2800/1130) |



u^b

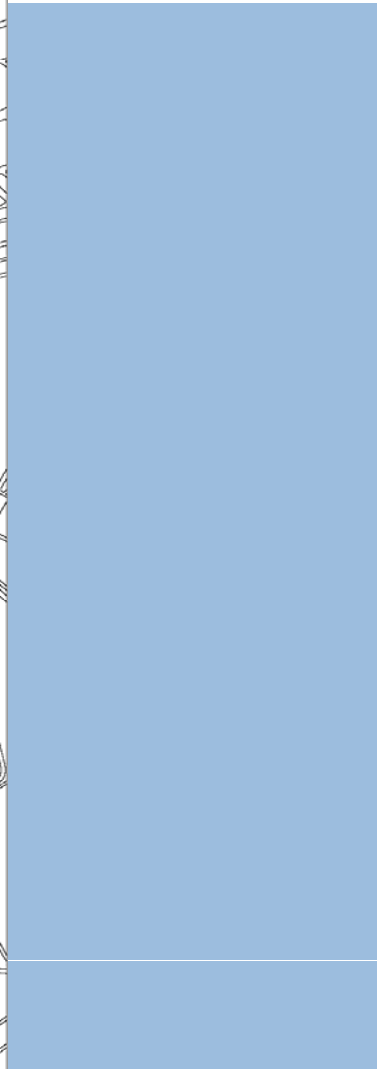
b
UNIVERSITÄT
BERN

Stadtplan



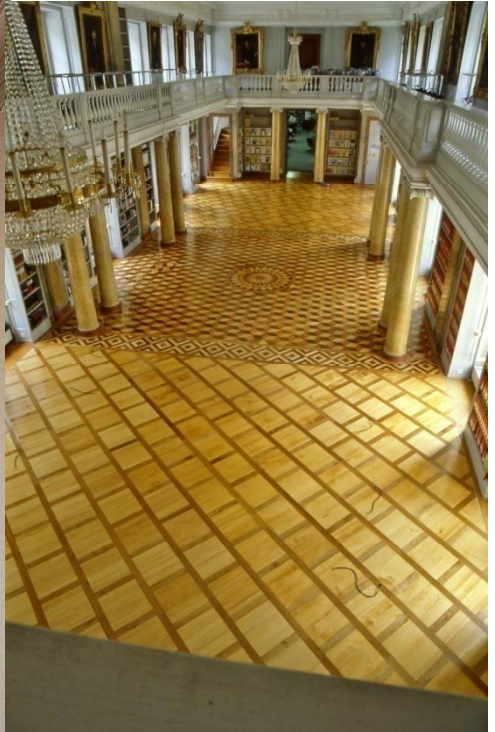
u^b

b
UNIVERSITÄT
BERN

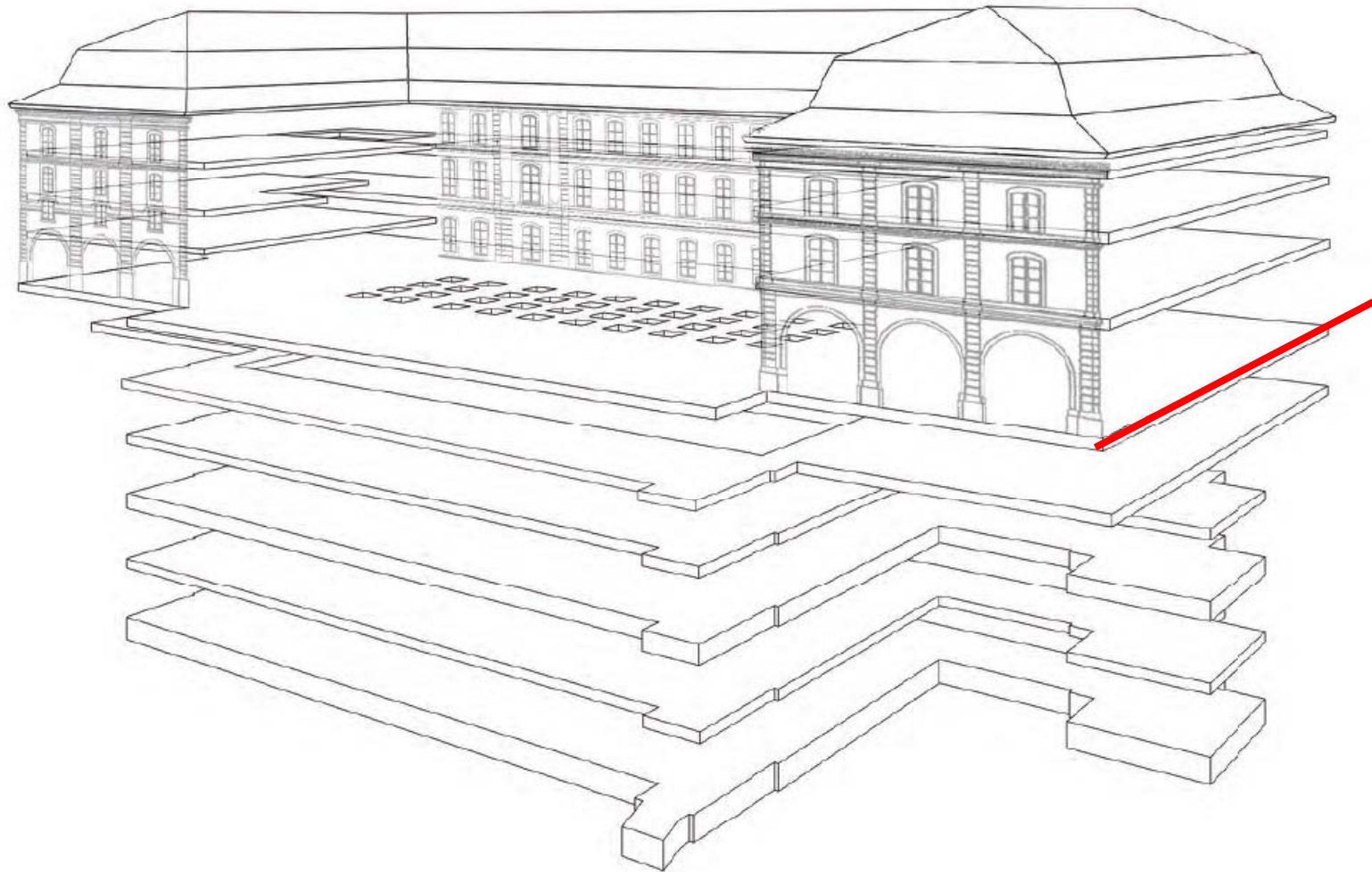


Central Library: old historic site





3D model of the building



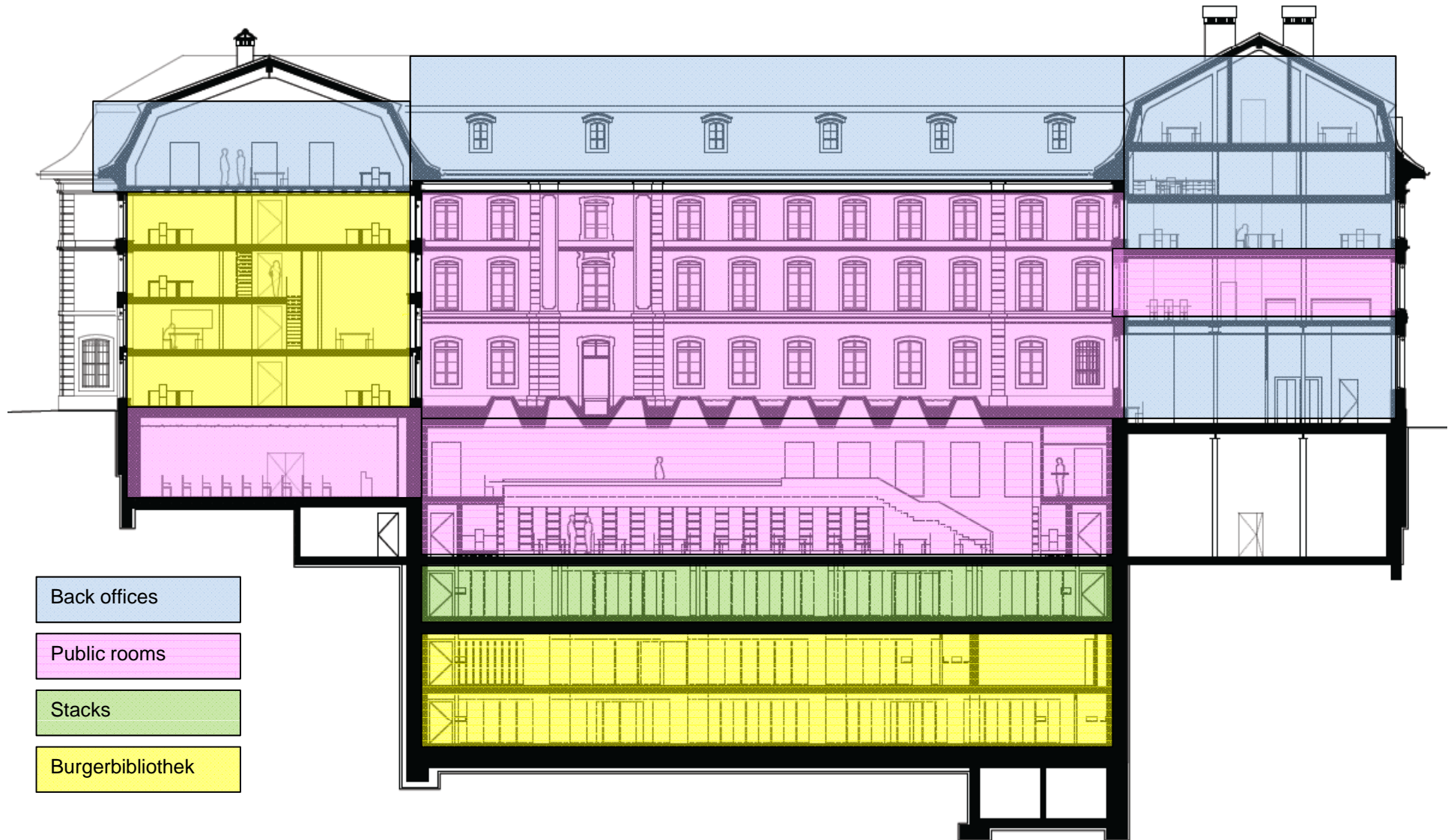
Central Library 2016: facts and figures

- > Open to students, teachers and the public
- > Improved learning facilities for students: 2 reading rooms with 300 seats, lounge, 6 group working rooms
- > Enlarged information services: reference desk, courses
- > Less print collections than 2013: 350 print journals and periodicals, 5000 volumes for reference
- > Historic collections (250'000 items published before 1900)
- > Exhibition room, auditorium (90 persons), 2 cafeterias
- > Offices for 80 staff members
- > Paper restoration atelier
- > Lending desk
- > Opening times: Mo-Fr 8-22, Sa-Su 8-18

Cross section

u^b

b
UNIVERSITÄT
BERN



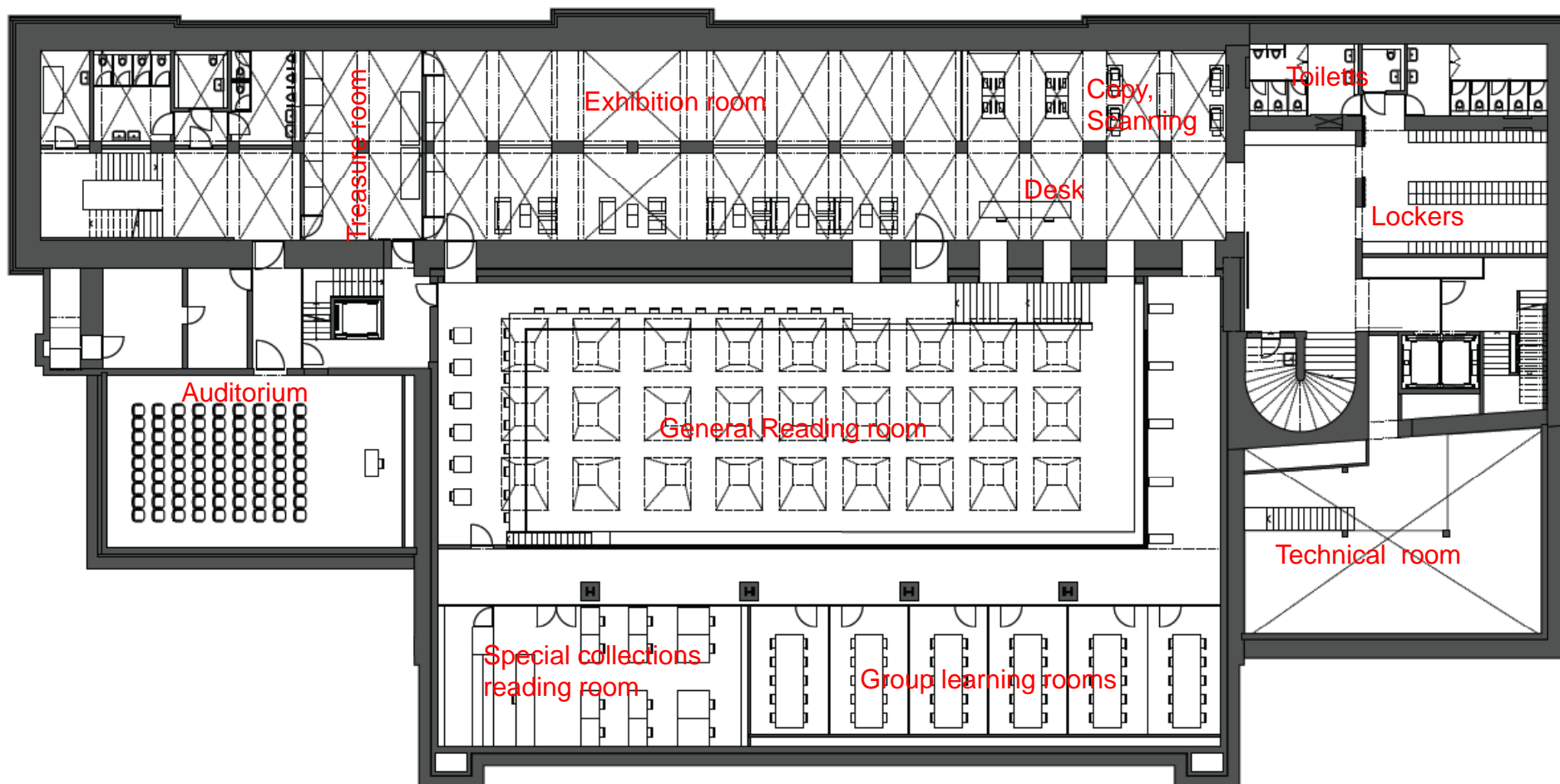








First basement story



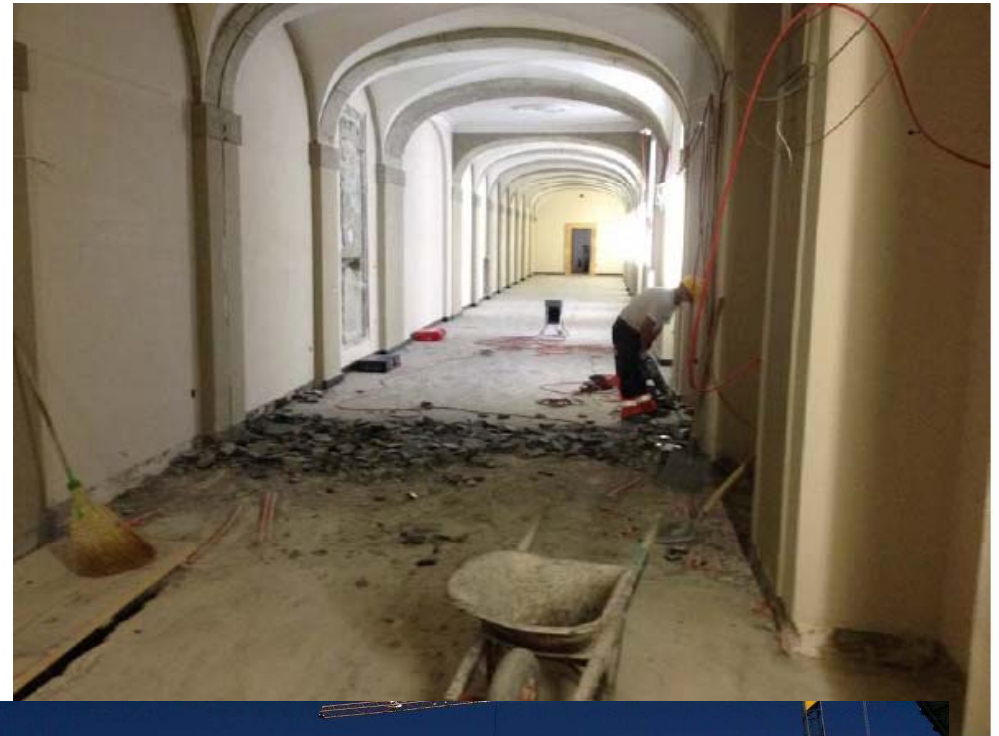
Historic cellar room (level -1) Exhibition room, access to reading room

u^b

b
**UNIVERSITÄT
BERN**



Renovation 2014-2015 Open to the public: spring 2016



Thank you for your attention!

Any questions?

christian.luethi@ub.unibe.ch