

A detailed architectural line drawing of a large, multi-story building. The drawing shows the structural framework, including a prominent central dome with several circular skylights. The building features a series of arches along its base and a complex roof structure with a central gable. The drawing is rendered in a light, sketchy style, highlighting the geometric forms and structural elements. The background is a solid dark grey.

# The Richelieu project

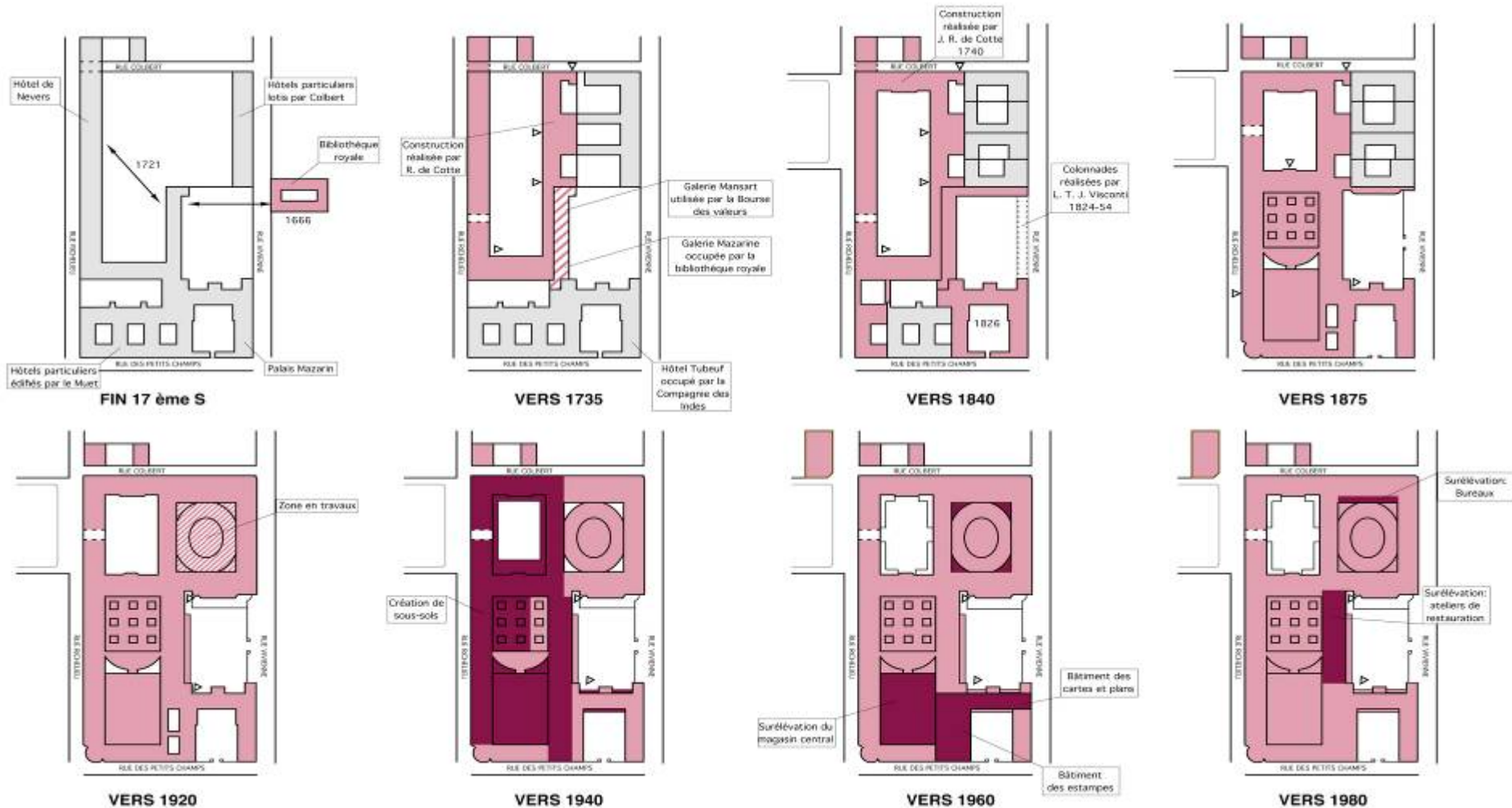
# The Richelieu site

Marie de Laubier, BnF

LAG Seminar, Madrid, 15 April 2010

# The architectural history of the site

Before occupying the current building, the national Library grew in successive stages, raising multiple problems for the architects.



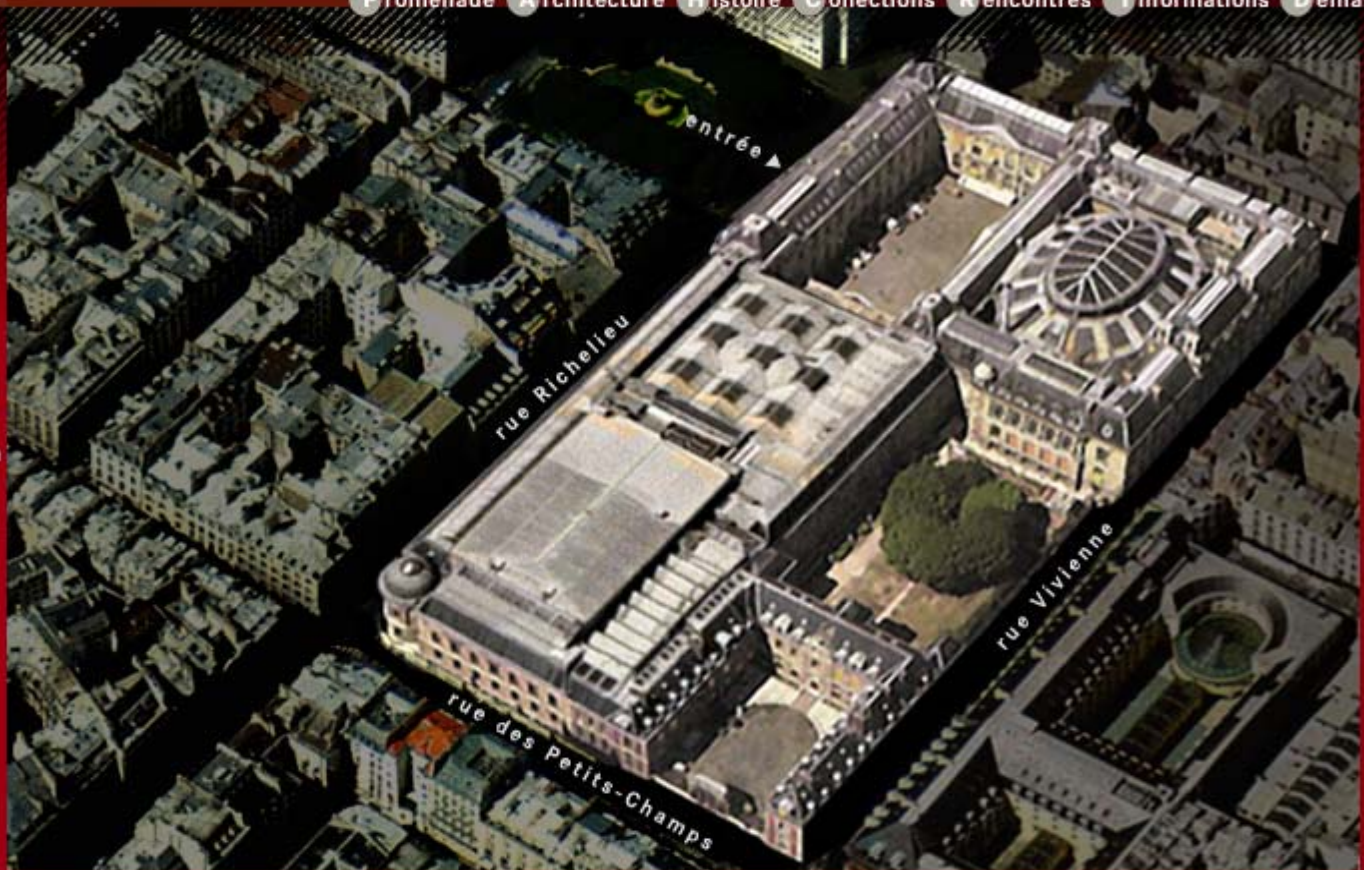
# The site today



## Visite virtuelle Richelieu

Promenade Architecture Histoire Collections Rencontres Informations Demain

- ▶ Salles de lecture
- ▶ Espaces d'exposition
- ▶ Services et circulation
- ▶ Coulisses



Vue aérienne

Plan



# Richelieu : key figures

The **Richelieu site**, historic home of the BnF :

- ❖ 58 000 m<sup>2</sup>, 450 employees
- ❖ **Five departments** : Performing arts, Maps and plans, Engravings and photography, Manuscripts, Coins, medals and antiquities (and Music department across the street)
- ❖ **20 million documents**
- ❖ **3 exhibition halls and a museum**
- ❖ **Workshops** for conservation and reproduction

**Number of readers per year** : approx. 53 000 readers in 2009

# The Richelieu project

→ **The Richelieu site will have a new look in 2017 and house 3 institutions**

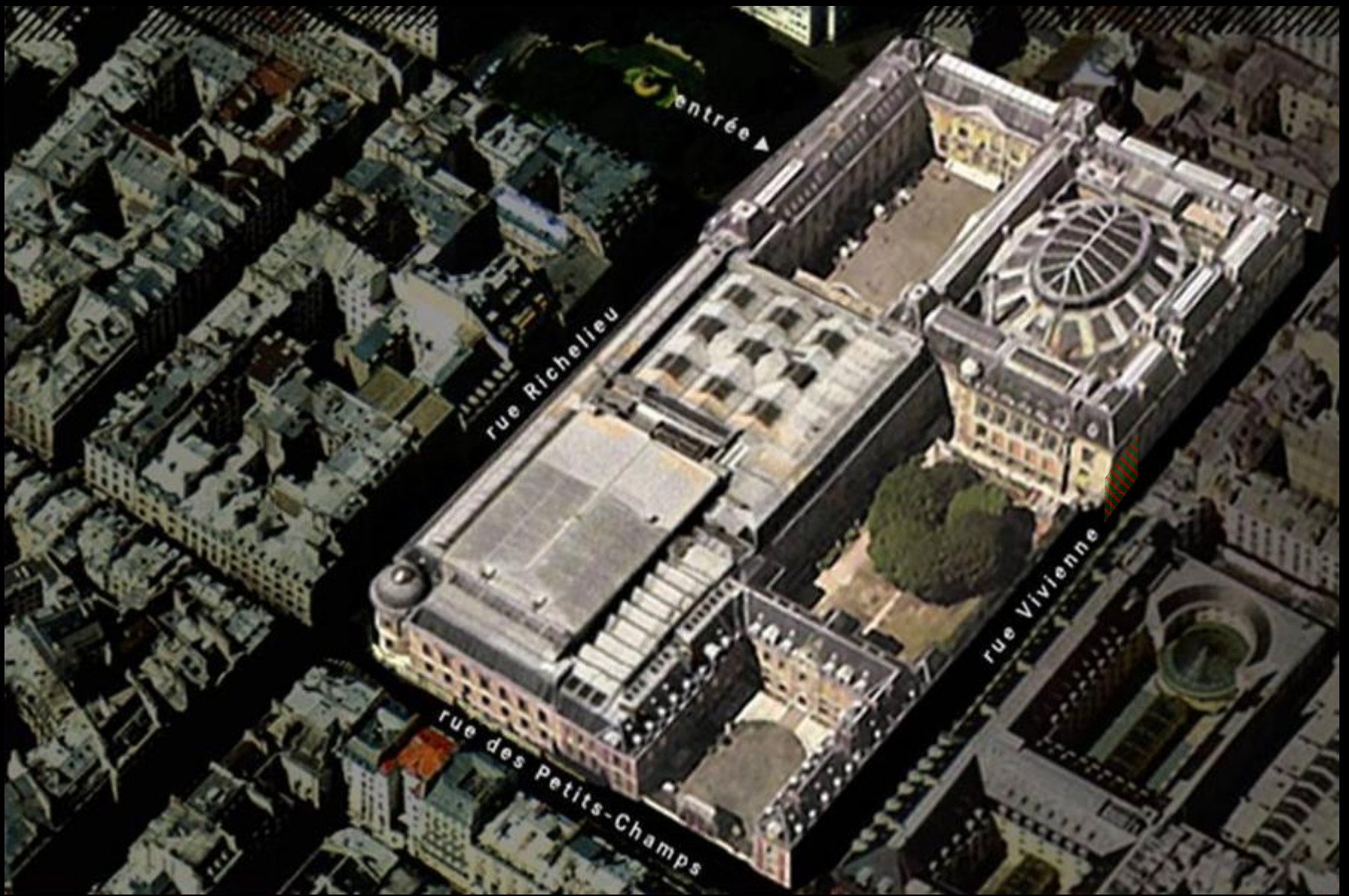
- **The BnF** : a new and more convenient organisation of the BnF collections and services. A new resource for the general public in the renovated salle Ovale
- **The BINHA** (Bibliothèque de l'Institut National d'Histoire de l'Art) : in and around the salle Labrouste, 1.4 million documents on art history (265 000 in free access)
- **L'École des chartes** : library will be located in the Petits-Champs wing and the school in a renovated building across the street.

N.B. the BnF will manage the entire site

# BnF objectives



- Undertake a major and much-needed renovation of the building
- Better access for the public
- Better working conditions
- Conservation standards for the collections respected
- New organisation of the special collections
- Improved access to the collections
- Increased cooperation between the 3 institutions
- Restructuring of the main reading room (salle Ovale)
- A larger offer of services to the public
- Educational activities for young people



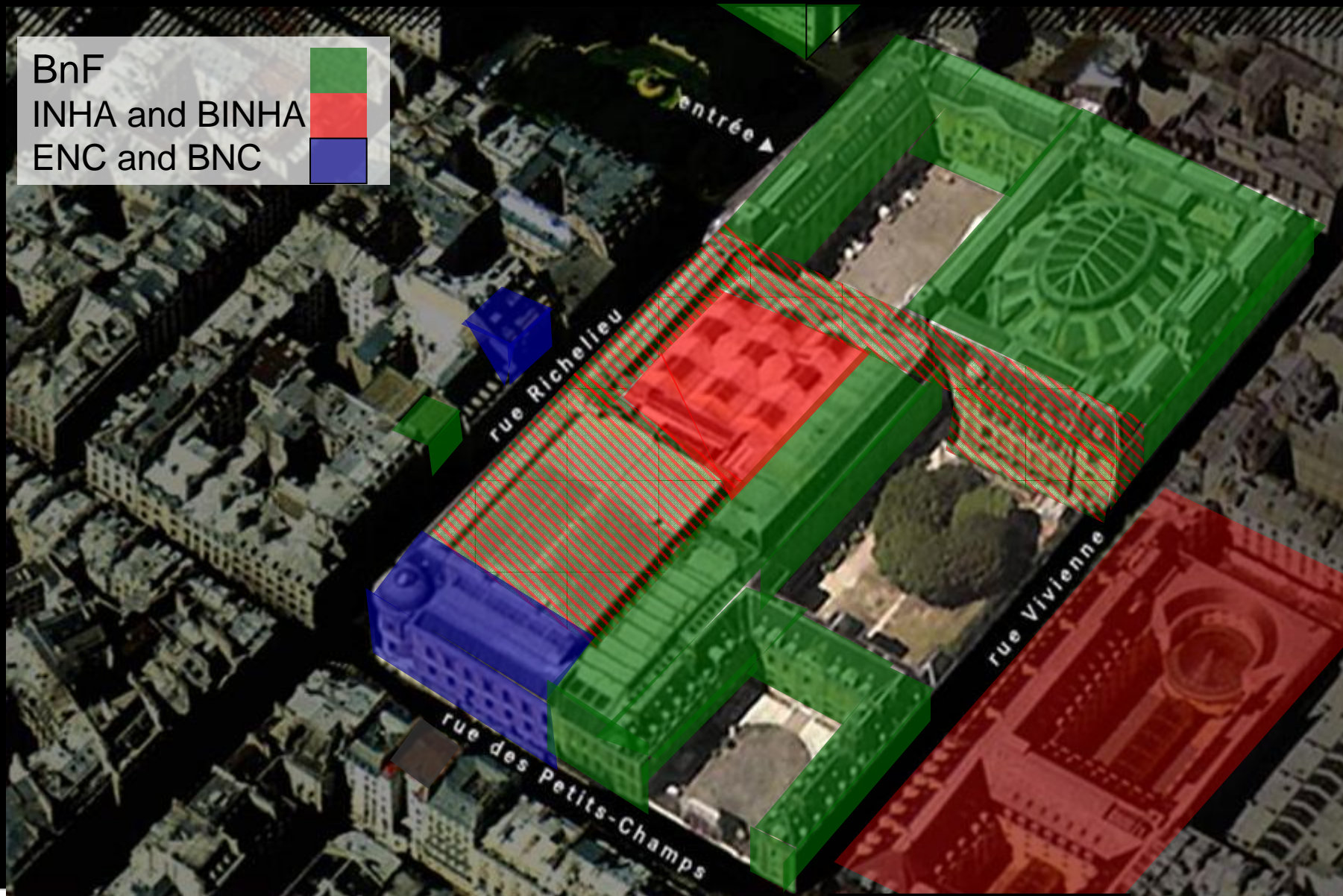
Division between the 3 institutions in 2016



BnF

INHA and BINHA

ENC and BNC



Division between the 3 institutions in 2016

# How it will work

# Two phases

- ⌘ Two distinct phases are necessary due to the **complexity of the program**, its **cost (200 million euros)** and the need **to maintain public access** throughout the period of renovation
  
- ⌘ As a result of a December 2004 study, the two phases correspond to two zones of the site :
  - Zone 1 along rue de Richelieu
  - Zone 2 along rue Vivienne
  
- ⌘ Meanwhile, we will manage to maintain all activities and services on the site

Salle Ovale :  
- salle de  
références (BnF)  
- collections  
Jacques Doucet (INHA)

Accueil  
Orientation  
des lecteurs

Monnaies,  
médailles  
et antiques  
salle de lecture

Monnaies,  
médailles  
et antiques  
musée

Cartes  
et plans

Estampes  
et photographie

rue Colbert

rue Vivienne

rue des Petits-Champs

Zone 2  
Zone 1  
2010-2014

rue de Richelieu

rue Louvois

Manuscrits  
orientaux

Manuscrits  
occidentaux  
Arts du  
spectacle

mars 2009

# The architect

⌘ **Bruno Gaudin** was chosen in July 2007

⌘ He is working with 3 technical research departments : IOSIS (engineering), CASSO (security standards), l'Observatoire 1 (lighting)

⌘ A key priority is fire prevention



Bruno Gaudin, the renovation of the Guimet museum (2000)




Bruno Gaudin, ENS library, Lyon (2000)

# The architectural studies : 2007-2009

- Diagnostic (analysis)
- Schéma directeur architectural et technique (governing architectural and technical design agreed)
- Preliminary design
- Detailed design
- Request for tenders

---

 EMOC is the contracting authority



# The goals of the renovation

# A new entrance



At present, the main entrance is not accessible for the disabled

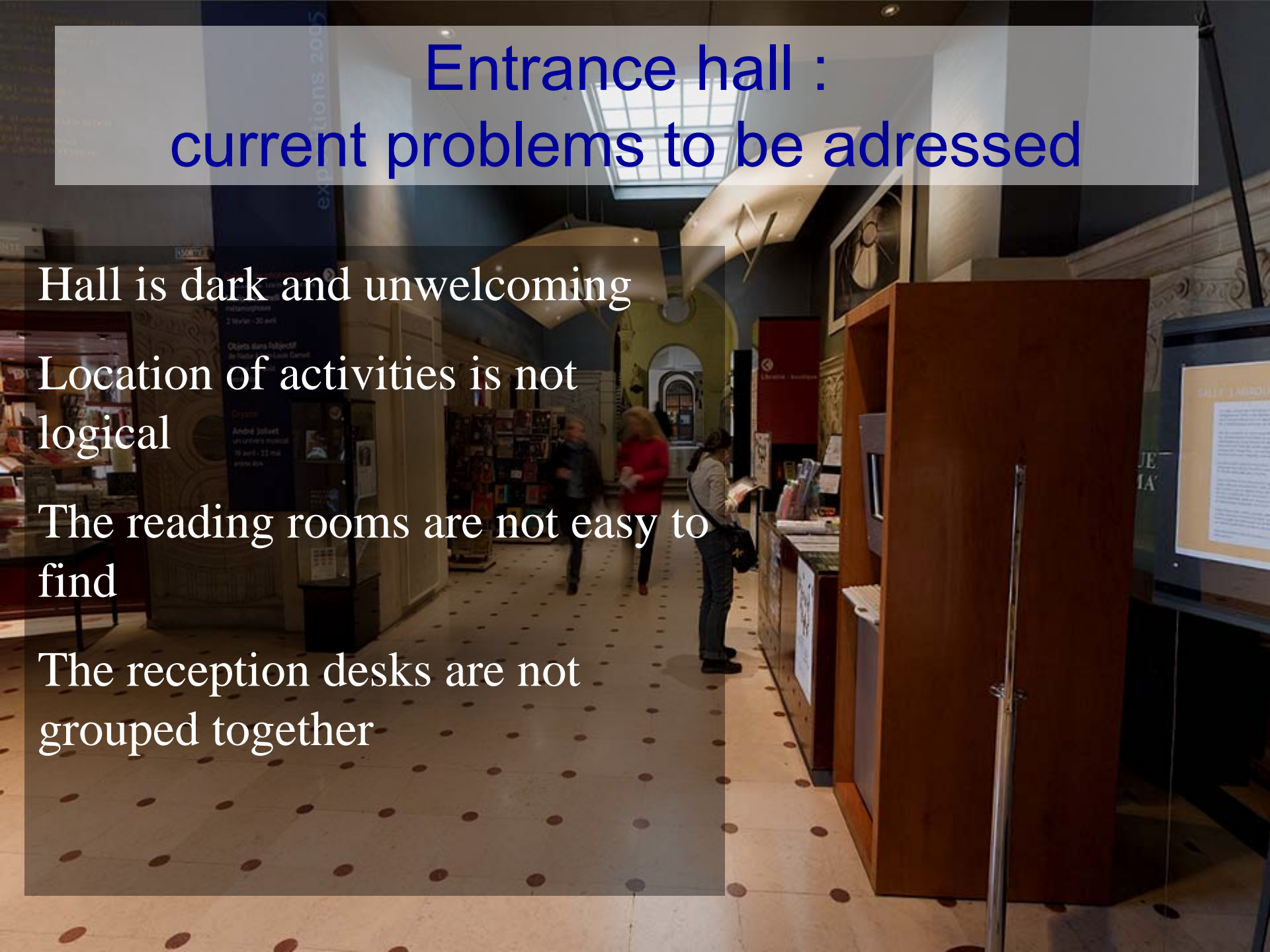
# Entrance hall : current problems to be adressed

Hall is dark and unwelcoming

Location of activities is not logical

The reading rooms are not easy to find

The reception desks are not grouped together

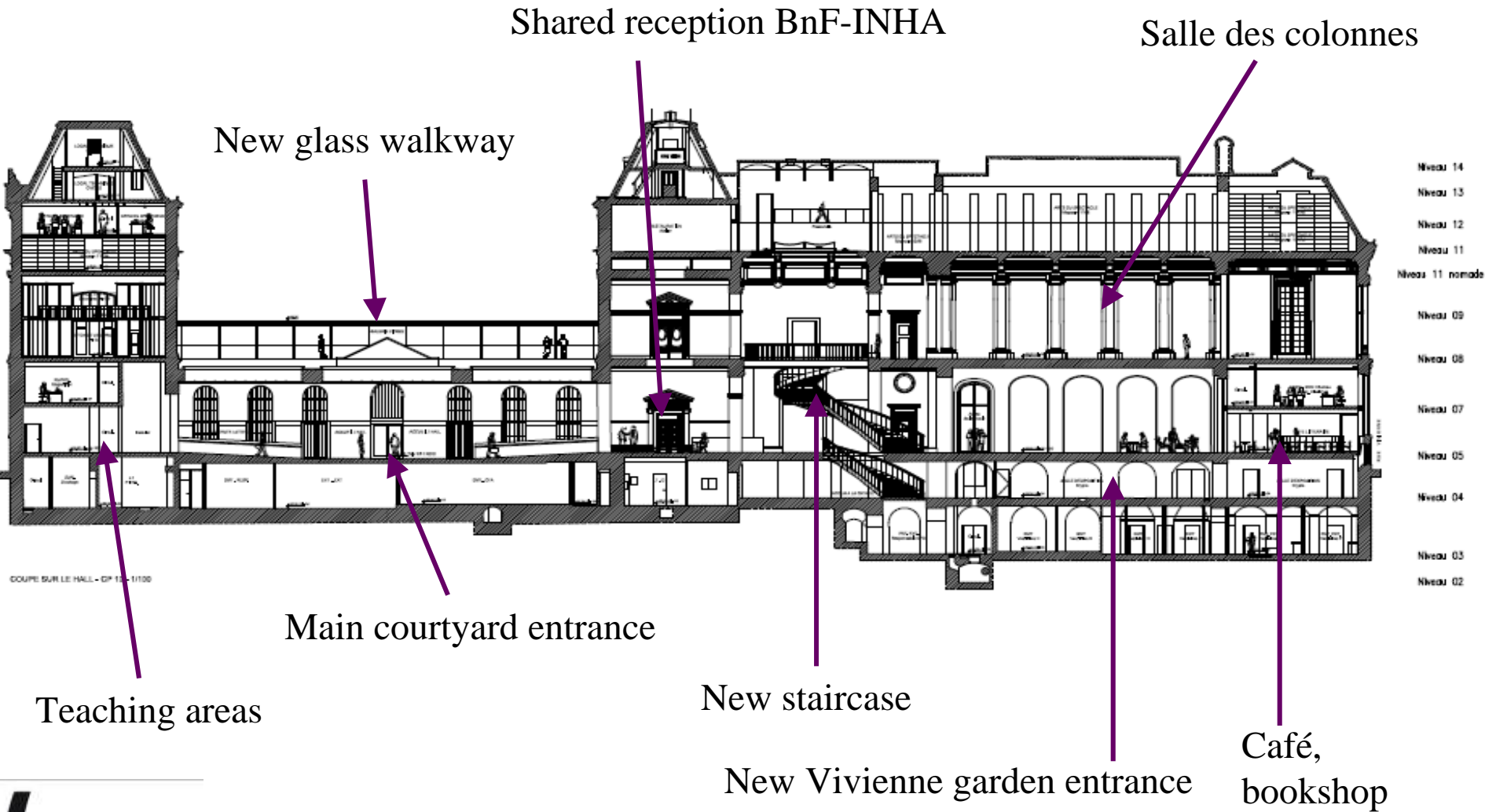




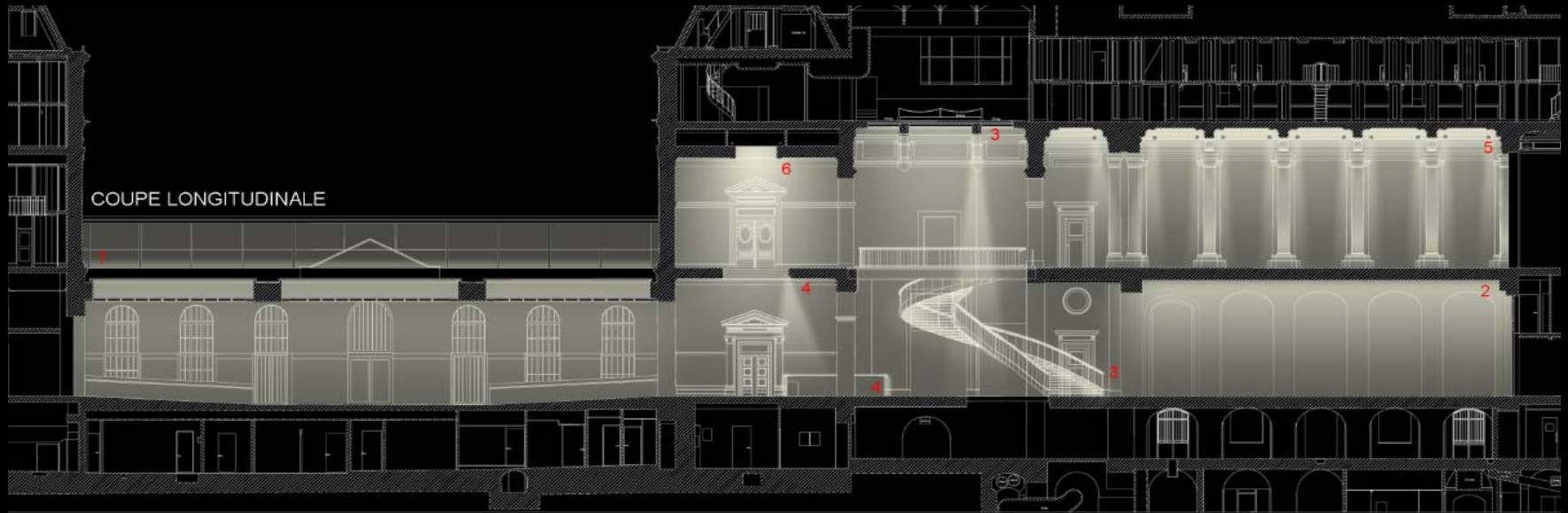
## Creation of a public space



# The new hall



*Cross section of the development*





Several rooms of historic beauty to be opened up :  
Chambre de Mazarin, galerie Viennot, rotonde Van Praet





Crypt



Mansart gallery



Creation of the **Treasures gallery** in the Mazarine gallery





A building that conforms to current  
safety standards...

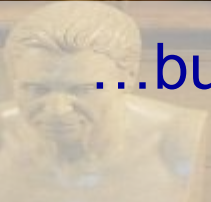
Fire safety standards

Smoke ventilation

Electrical system

Ventilation, air conditioning

Access



...but a unique architectural  
heritage to respect



Reading rooms to be renovated



# The Oval room



A reading room for the general public in 2016

# A new role for the Oval room

- Access for general public to multimedia material from all fields of all departments
- Access for researchers to the library electronic databases and the digital library Gallica
- Latest technology
- Events linked to the library and the literary world

We plan to welcome 400 people daily

{ BnF

# Preliminary work

# Relocations

- ⌘ A large part of the collections (from all departments) was temporarily relocated in 2008-2010 : 30 km of shelving relocated to Tolbiac, Bussy and zone 2
- ⌘ Services were temporarily relocated:
  - 260 members of staff now work in modular buildings on the Richelieu site, in the Tolbiac building, in the Arsenal library and zone 2.



Temporary buildings for staff and public

*L'Observatoire 1*

## Two temporary reading-rooms for Performing Arts and Manuscripts





# Important milestones

- **Closure of zone 1 (Richelieu wing) to public and staff** : April 6th, 2010
- **Start of renovation project work** : end of 2010
- **Duration of phase 1 work** : 2011-2013
- **Architectural studies for zone 2** : 2011-2013
- **Work on phase 2** : 2014-2016
- **End of renovation** and return of temporarily relocated departments : end of 2016

**Miniatures et peintures indiennes**

François-Mitterrand  
jusqu'au 8 juin 2010



**Les rendez-vous du samedi**  
10<sup>e</sup> anniversaire de la revue *Cités*

François-Mitterrand - le 11 mars 2010

Expositions | Conférences | Expositions virtuelles

**La BnF acquiert le manuscrit des mémoires de Casanova**

Le manuscrit mythique du génial mémorialiste acquis par la BnF, grâce à un généreux mécène.



► Poser une question à un bibliothécaire

Gallica | Catalogue général | Collections

**L'avenir du « Cabinet des Médailles »**

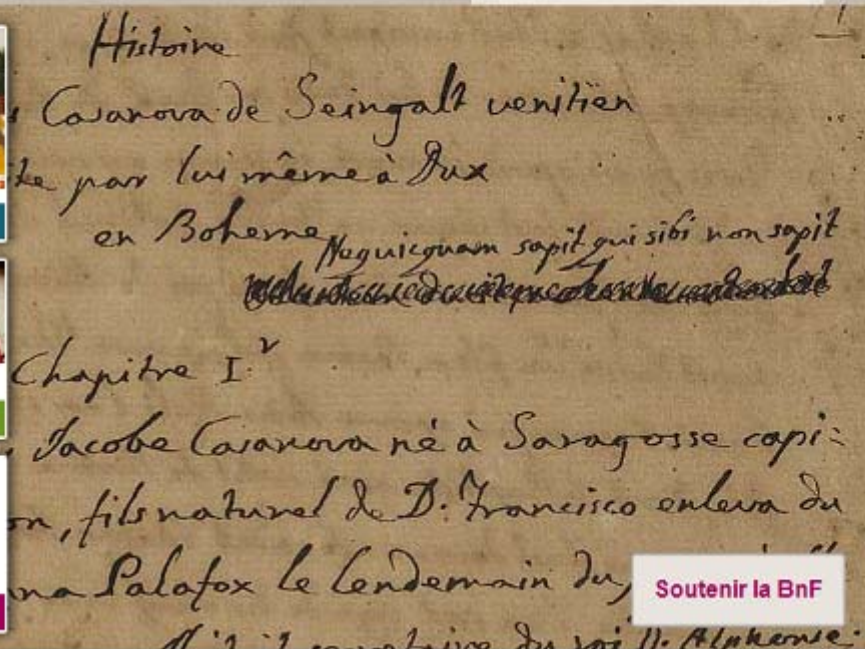
La direction de la BnF communique.

**Bourse Jeune talent du dessin de presse 2010**

date limite de candidature : le 12 mars 2010

► Conditions d'accès et tarifs | ► Réserver une place

Actualités | BnF pratique | Consulter à Richelieu



Soutenir la BnF

**Événements et culture**

- Conférences
- Expositions
- Éditions de la BnF
- Expositions virtuelles
- Dossiers pédagogiques

**Collections et services**

- Bibliothèques numériques - Gallica
- Catalogues
- Collections
- Aides à la recherche documentaire
- Périodiques et bases en ligne
- Banque d'images
- Reproduction des documents
- Services aux lecteurs
- Les Signets de la BnF

**La BnF**

- Actualités
- BnF pratique
- Connaître la BnF
- Projets de recherche
- **Rénovation de Richelieu**
- Lettres et blogs
- Chroniques

**Pour les professionnels**

- Actualités professionnelles
- Dépôt légal
- ISSN, ISBN, autres numéros
- Bibliographie nationale française
- Catalogage et indexation
- Produits et services bibliographiques
- Coopération nationale
- Formations et journées professionnelles
- Action internationale
- Numérisation
- Conservation

**Accès dédiés**

- Appels d'offres
- Associations
- Éditeurs
- Enseignants et jeunesse
- Mécénat
- Offres d'emploi
- Presse
- Publics handicapés
- Tournages et location d'espaces