

What you see here is

- the cover
- the table of contents
- the chapter on the Warsaw University Library (pp 221-227) with photos, architectural drawings and the answers to a standardised questionnaire. These elements appear in each chapter.

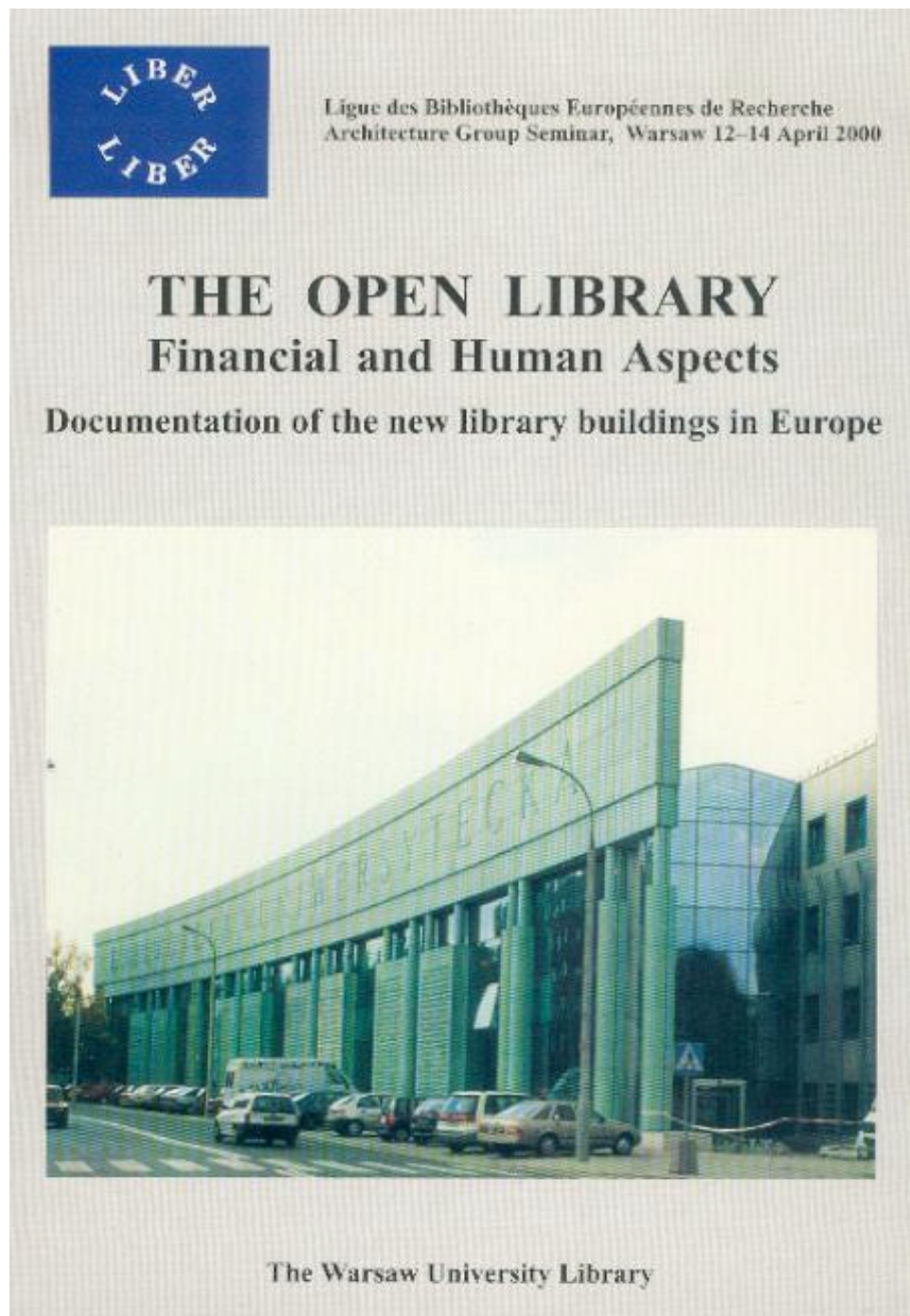


Table of Contents

Introduction by Elmar Mittler	5
Questionnaire	7
Library Buildings:	
1. ANTWERPEN, Belgium	9
2. BOZEN-BOLZANO, Austria-Italy	27
3. BRIXEN, Austria	35
4. CASTELLO, Spain	43
5. CERGY-PONTOISE, France	49
6. CORDOBA, Spain	55
7. EMDEN, Germany	61
8. GREIFSWALD, Germany	69
9. HELSINKI, Finland	75
10. KOBLENZ, Germany	83
11. LEUVEN, Belgium	89
12. LIMOGE, France	95

13. LÜNEBURG, Germany	105
14. LISBOA, Portugal	111
15. MAGDEBURG, Germany	117
16. OSLO, Norway	127
17. OSTRAVA, Czech Republic	133
18. PAMPLONA, Spain	139
19. PORTO, Portugal	145
20. RETHYMNON, Greece	153
21. LA ROCHELLE , France	161
22. ROSKILDE, Denmark	169
23. ROUEN, France	179
24. STUTTGART, Germany	189
25. TOULOUSE, France	197
26. UTRECHT, Netherlands	207
27. VALENCIA, Spain	215
28. WARSZAWA, Poland	221
29. ZWICKAU, Germany	229

The Warsaw University Library



- 1.1.1. university library
- 1.1.2. The Warsaw University Library
- 1.1.3. ul. Dobra 56/66 00-312 Warszawa, Poland
- 1.1.4. (+48 22) 5525660; 5525659; buw@plearn.edu.pl
- 1.1.5. dr Henryk Hollender
- 1.1.6. Ewa Kobierska-Maciuszko, dep. dir.

- 1.2.1. 24 000
- 1.2.2. 30 000
- 1.2.3. 20 000
- 1.2.4. 10 000

- 1.3.1. 12 000 m²
- 1.3.2. 160
- 1.3.3a. 20 000 wol.
- 1.3.3b. 2 500 000 wol.
- 1.3.4. 250
- 1.3.5. 71 /320

- 2.1.1. Zbigniew Badowski, Marek Budzynski, Adam Kowalewski ARCHITEKCI Ltd.
- 2.1.2. Marek Budzynski, Zbigniew Badowski, Anna Chmura

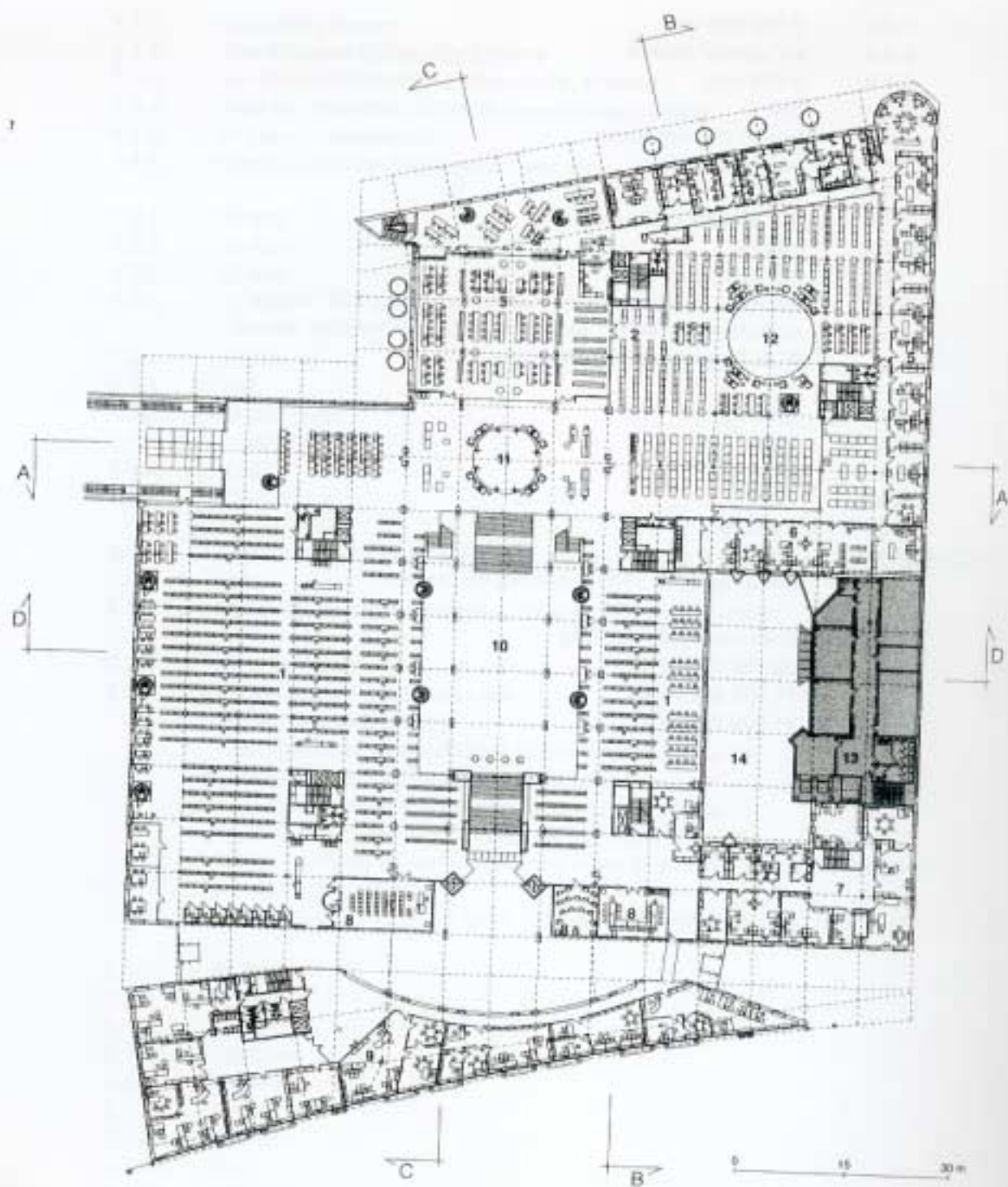
- 2.2. New building
- 2.3.
 - open access to 0,5 mln vol.
 - more readers seats
 - development of the library in the field of research
 - computer and audiovisual materials
 - development of training for non-student readers
 - extension of the opening hours to the public, etc.
- 2.4.1. 10min. walking distance from the main University campus, adjacent to public transportation
- 2.4.2. irregular plan, modular grid: 7,20 m , uncovered concret

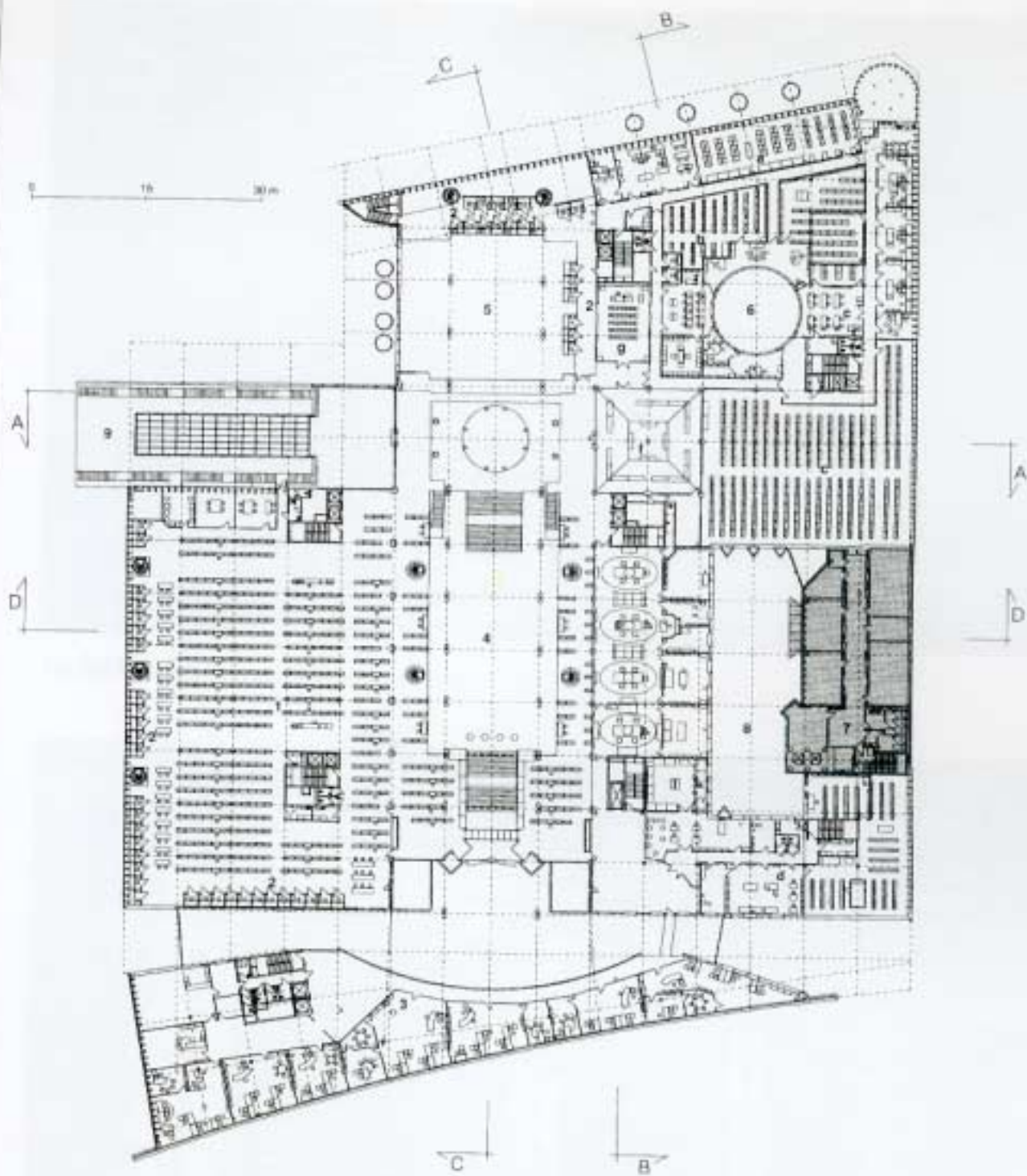
- 3.1. 43 000 m²
- 3.1.2. 25 000 m²
- 3.1.3a. 1500 m²
- 3.1.3b. 1000 m²
- 3.1.3c. 5 000 m²
- 3.1.3d. 500 m²
- 3.1.4a. 500 m²
- 3.1.4b. no
- 3.1.4c. 1000 m²
- 3.1.5. 2000 m²
- 3.1.6. 4500 m²
- 3.1.7. 12 000 m²
- 3.3. 900
- 3.3.1. 20
- 3.3.2. 110
- 3.3.3. 70
- 3.3.4. 700
- 3.4.1. 3 500 000 wol.
- 3.4.2. 1 500 000 wol.

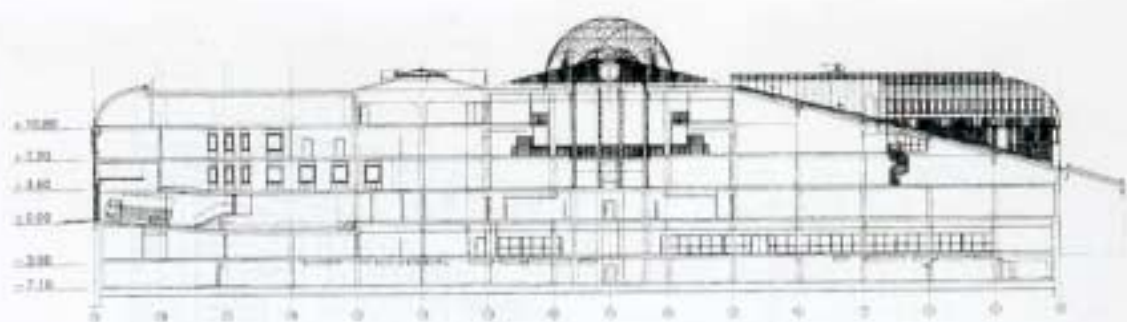
- 3.4.3. 2 000 000 wol.
- 3.4.4. *all closed stacks*
- 3.4.5. 5 000 wol.
- 3.5. 300
- 3.6.1 full air conditioning
- 3.6.2 fancoils
- 3.6.3 ERCO
- 3.6.4 ECOPHON ceilings
- 3.6.5 16 lifts
- 3.6.6 lifts and trolleys
- 3.6.7 access control system, monitoring, magnetic labels
- 3.6.8. opticfibre network, 360 work stations Compaq, server
SUN Enterprise 450, Windows NT

- 4.1. 1993
- 4.2. 1993
- 4.3. 1994
- 4.4. 1995
- 4.5. 4 years
- 4.6. 1999
- 4.7. December 15, 1999 (opening for users)

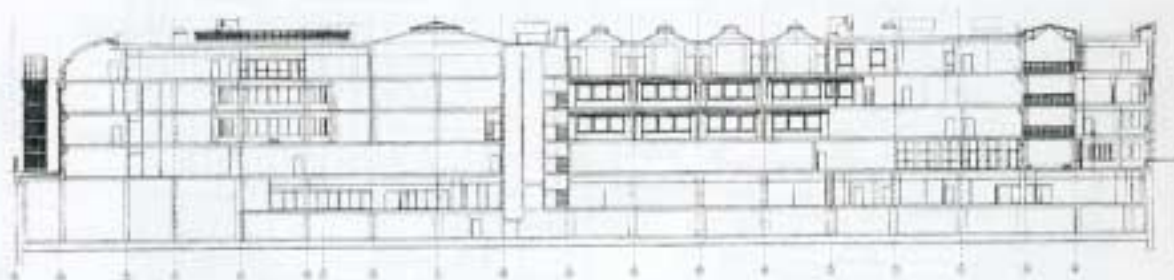
- 5.1. donation from the City
- 5.2. 80 000 000 USD
- 5.3. 11 500 000 USD
- 5.5. 91 500 000 USD



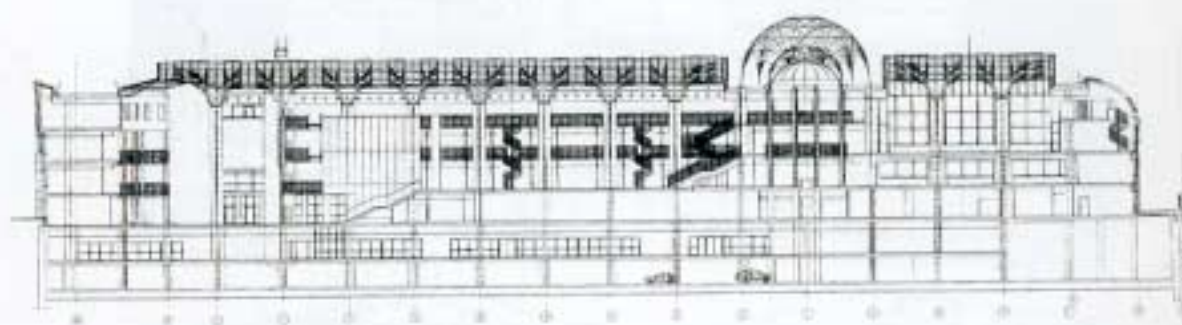




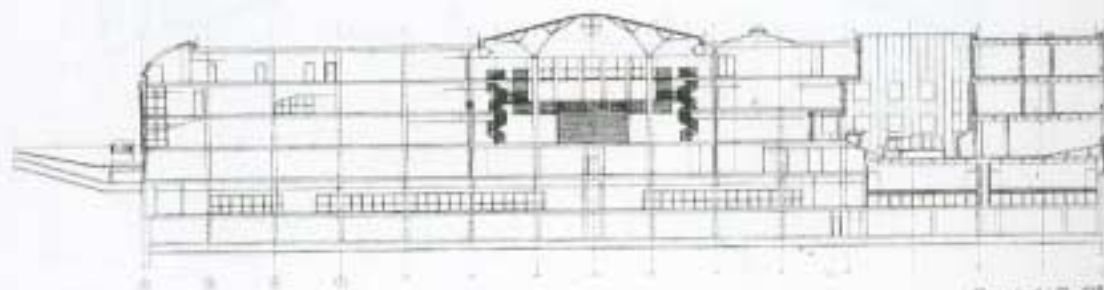
Przekrój A-A



Przekrój B-B



Przekrój C-C



Przekrój D-D*



The main catalogue and information hall



The open access three levels (from the main hall)